

The Contract Documents for the indicated public improvement were prepared under my supervision and to the best of my knowledge and belief, they comply with the relevant building codes of the State of Maryland. License # 7472 Expiration Date 1/16/2023

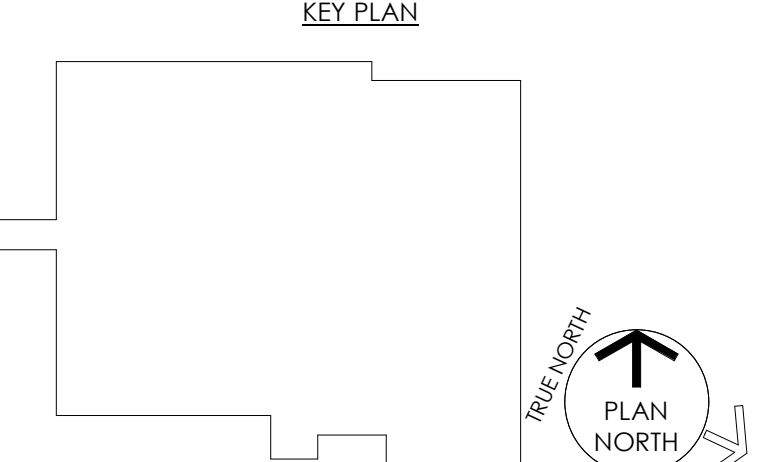
PROJECT INFORMATION PROJECT TITLE

MARYLAND STATE POLICE TACTICAL SERVICES OPERATIONS & COMMAND BUILDING

PROJECT ADDRESS 7777 Washington Boulevard Jessup, MD 20794

PROJECT OWNER Maryland DEPARTMENT OF GENERAL SERVICES

SHEET INFORMATION KEY PLAN



ISSUED FOR

Table with columns for Description, Date, and Issued For. Includes 'FOR BIDDING' dated 09/05/2023.

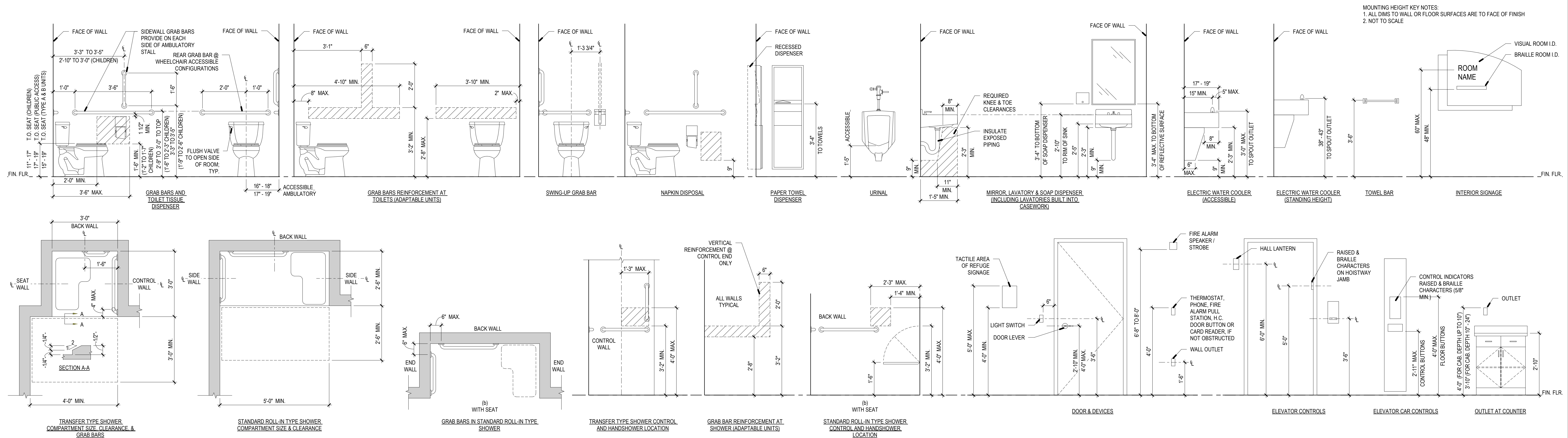
CAD DWG FILE: DRAWN BY: NHA CHK'D BY: NHA

JOB NUMBER: 21921 & DGS PA-745-210-001 ISSUE DATE: 09/05/2023 SHEET TITLE:

ABBREVIATIONS & TYPICAL MOUNTING HEIGHT KEY

SHEET NUMBER: G002 SHEET 2 OF 167

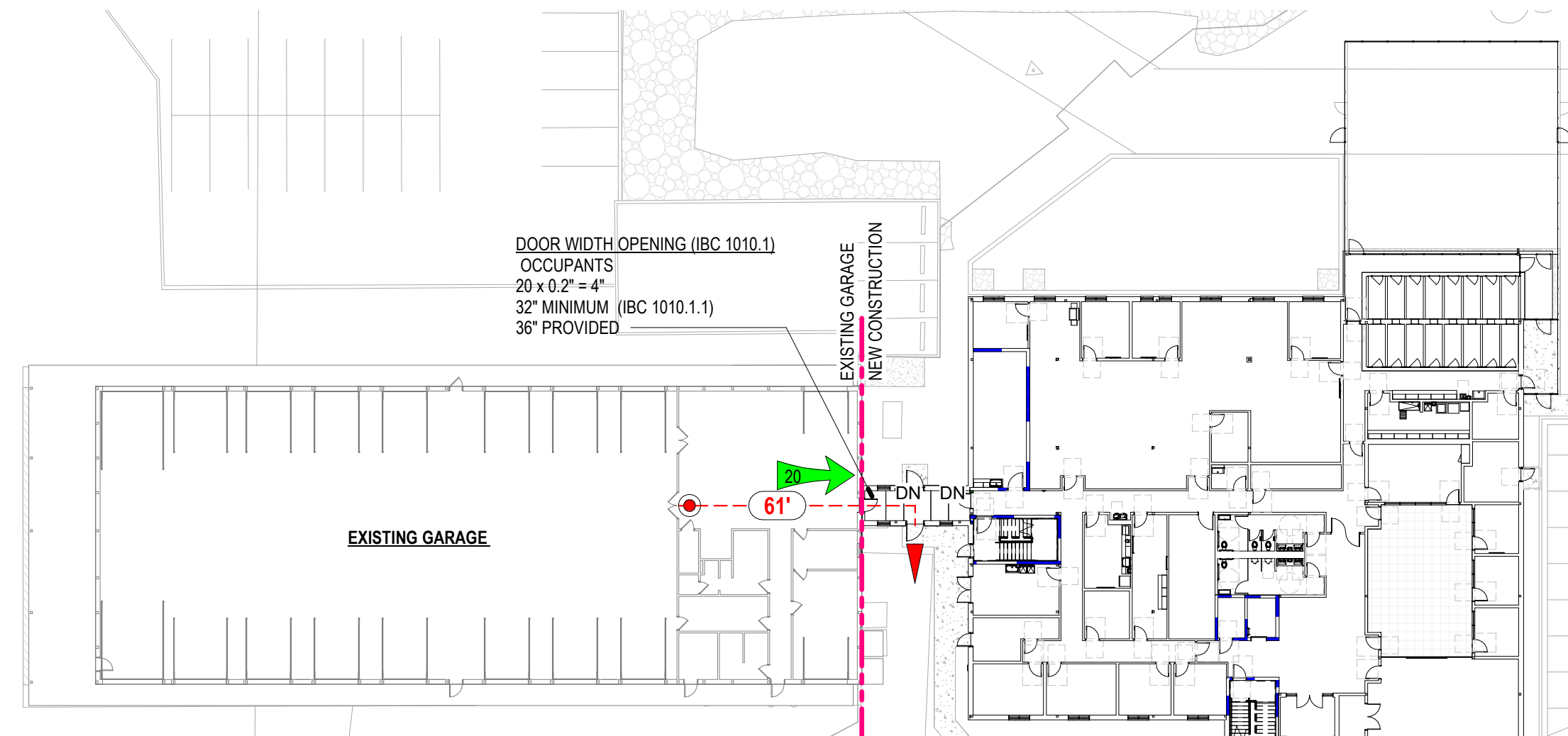
TYPICAL MOUNTING HEIGHT KEY



LIST OF ABBREVIATIONS

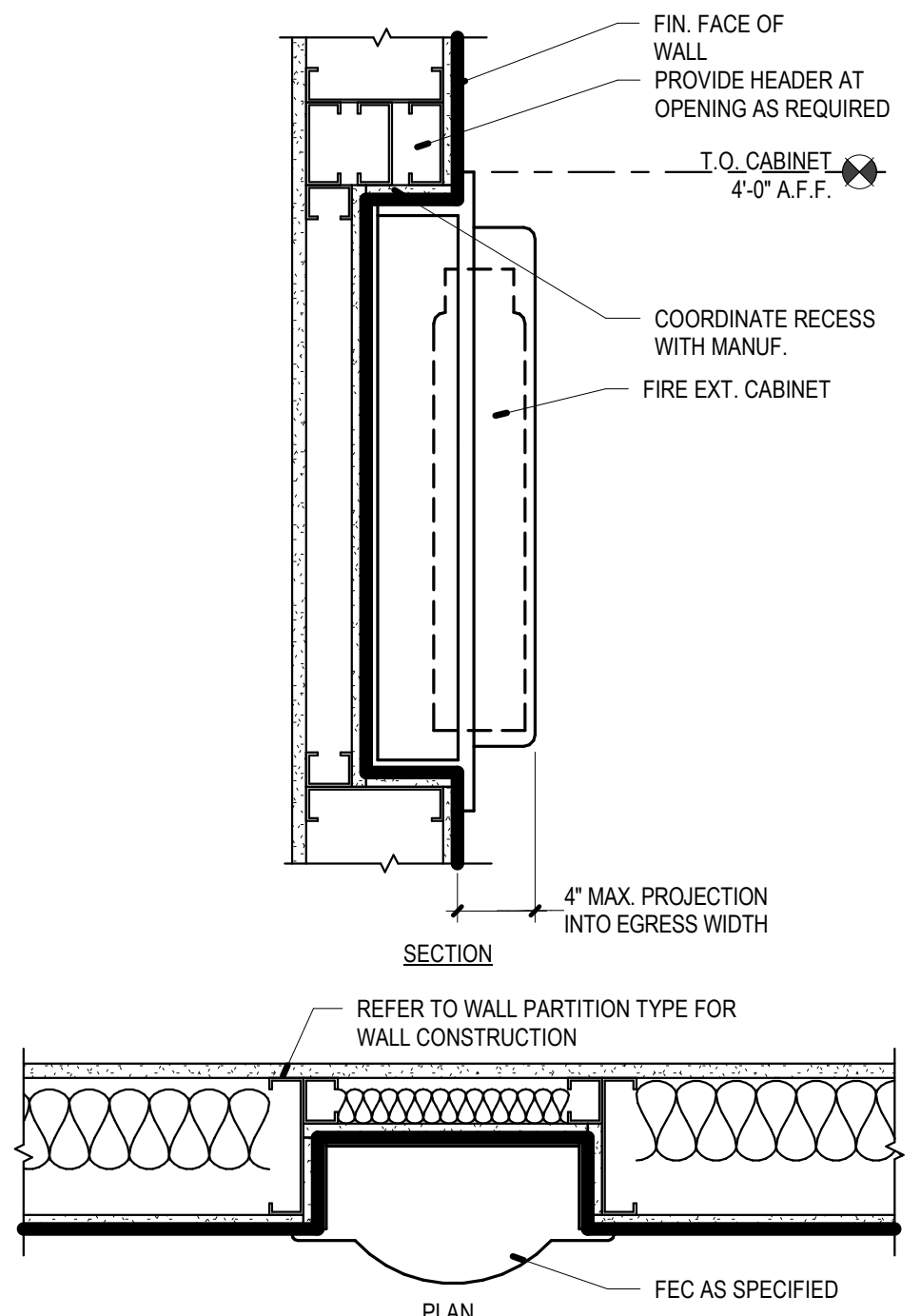
Comprehensive list of abbreviations used in the drawings, organized in columns with their corresponding full names.

9/12/2023 1:48:07 PM \\BMS01\p1\2021 MD DGS MSP Tactical Services Command Bldg_001.dwg



EXISTING GARAGE - BUILDING INFORMATION
 BUILDING AREA: 12,600 SQ.FT.
 BUILDING HEIGHT: 1 STORY / +/- 37'-8"
 OCCUPANCY: S-1
 CONSTRUCTION TYPE: V-B
 FULLY SPRINKLERED

NOTE:
 1. REFER TO 100303 FOR NEW CONSTRUCTION EGRESS EXITING AND FURTHER EGRESS INFORMATION.



GENERAL NOTES:
 1. USE FIRE RATED CABINETS IN RATED WALLS THAT EQUAL OR EXCEED THE RATING OF THE WALL. REFER TO FLOOR PLANS FOR RATINGS.
 2. PLAN AND SECTION DETAILS SHOW CABINET IN WALL AS IT RELATES TO ADJACENT MATERIALS AND RATED CONDITIONS. REFER TO SPECIFIC DESIGNATED LOCATIONS ON PLAN FOR ACTUAL CONDITION.

3 FIRE EXTINGUISHER CABINET DETAIL
 1/12" = 1'-0"

2 EXISTING GARAGE EGRESS PLAN
 1/32" = 1'-0"

OCCUPANCY SCHEDULE					
Number	Name	Area	Area Per Occupant	Classification	Occupancy Load Tag Value
100	VEST	121.97 SF	(none)		
101	LOBBY	672.12 SF	(none)		
101A	MEN	190.74 SF	(none)		
101B	WOMEN	189.43 SF	(none)		
102	ELEVATOR LOBBY	140.13 SF	(none)		
103	ELEVATOR MACHINE ROOM	59.73 SF	300.00 SF	Accessory storage areas, mechanical equipment room	1
104	ASST CMD	148.44 SF	100.00 SF	Business areas	2
105	SUPPLY COPY	236.85 SF	100.00 SF	Business areas	3
106	ASST CMD 3	146.86 SF	100.00 SF	Business areas	2
107	ADMIN ASST 14	119.89 SF	100.00 SF	Business areas	2
108	HALLWAY	205.28 SF	(none)		
109	COMMANDER	196.89 SF	100.00 SF	Business areas	2
110	CMD MAJOR SO	198.64 SF	100.00 SF	Business areas	3
111	UTILITY	159.10 SF	300.00 SF	Accessory storage areas, mechanical equipment room	1
115	HALLWAY	149.24 SF	(none)		
116	URTI EQUIP	241.99 SF	300.00 SF	Accessory storage areas, mechanical equipment room	1
117	CONNECTOR	174.36 SF	(none)		
118	ARMORY	399.12 SF	300.00 SF	Accessory storage areas, mechanical equipment room	2
119	HALLWAY	638.77 SF	(none)		
120	BREAK ROOM	175.74 SF	15.00 SF	Assembly without fixed seats - Unconcentrated (tables and chairs)	12
121	IT ROOM	317.97 SF	300.00 SF	Accessory storage areas, mechanical equipment room	2
122	JAN	48.64 SF	300.00 SF	Accessory storage areas, mechanical equipment room	1
123	ELEC	120.39 SF	300.00 SF	Accessory storage areas, mechanical equipment room	1
124	OFFICE CUBICLES	2360.29 SF	100.00 SF	Business areas	24
124A	FILES	101.49 SF	300.00 SF	Accessory storage areas, mechanical equipment room	1
125	STATE CMD	141.53 SF	100.00 SF	Business areas	2
126	SEU CMD	149.80 SF	100.00 SF	Business areas	2
127	MC CMD	149.87 SF	100.00 SF	Business areas	2
128	K9 CMD	161.59 SF	100.00 SF	Business areas	2
130	HALLWAY	386.27 SF	(none)		
131	K9 KENNELS (OUTDOOR RUNS)	357.40 SF	(none)		
132	KENNELS	84.22 SF	50.00 SF	Locker rooms	2
133	GROOMING	216.84 SF	100.00 SF	Business areas	3

OCCUPANCY SCHEDULE					
Number	Name	Area	Area Per Occupant	Classification	Occupancy Load Tag Value
134	CANINE STORAGE	110.29 SF	300.00 SF	Accessory storage areas, mechanical equipment room	1
135	UTILITY	170.65 SF	300.00 SF	Accessory storage areas, mechanical equipment room	1
140	OPERATIONS CENTER	843.45 SF	15.00 SF	Assembly without fixed seats - Unconcentrated (tables and chairs)	56
141	CONFERENCE	305.97 SF	15.00 SF	Assembly without fixed seats - Unconcentrated (tables and chairs)	21
142	IC STATION	118.07 SF	100.00 SF	Business areas	2
143	IC STATION	117.91 SF	100.00 SF	Business areas	2
144	IC STATION	117.54 SF	100.00 SF	Business areas	2
145	TRAINING	956.42 SF	7.00 SF	Assembly without fixed seats - Concentrated (chairs only not fixed)	137
145A	STORAGE	60.66 SF	300.00 SF	Accessory storage areas, mechanical equipment room	1
200	HALLWAY	683.55 SF	(none)		
201	MEN	151.28 SF	(none)		
202	WOMEN	160.21 SF	(none)		
203	SFMO CMD	205.77 SF	100.00 SF	Business areas	3
204	ADMIN ASSIST	157.87 SF	100.00 SF	Business areas	2
205	LIC APP	114.35 SF	100.00 SF	Business areas	2
206	JAN	44.86 SF	300.00 SF	Accessory storage areas, mechanical equipment room	1
207	ELEC	45.03 SF	300.00 SF	Accessory storage areas, mechanical equipment room	1
209	M TOILET	249.51 SF	50.00 SF	Dormitories	6
209A	M TOILET	65.52 SF	(none)		
210	WOMENS BR	250.37 SF	50.00 SF	Dormitories	6
210A	W TOILET	65.89 SF	(none)		
211	LACT	90.48 SF	100.00 SF	Business areas	1
212	SUPPLY / COPY	105.91 SF	300.00 SF	Accessory storage areas, mechanical equipment room	1
215	SFMO BOMB TECH	965.32 SF	100.00 SF	Business areas	10
216	BREAK ROOM	137.55 SF	15.00 SF	Assembly without fixed seats - Unconcentrated (tables and chairs)	10
217	SFMO STORAGE	800.31 SF	300.00 SF	Accessory storage areas, mechanical equipment room	3
218	SFMO UNIT CMD	166.92 SF	100.00 SF	Business areas	2
219	SFMO UNIT CMD	170.01 SF	100.00 SF	Business areas	2
220	SFMO BOMB TECH WS	390.85 SF	100.00 SF	Business areas	4
221	SFMO CLASSROOM	521.03 SF	15.00 SF	Assembly without fixed seats - Unconcentrated (tables and chairs)	35
222	STORAGE	77.70 SF	300.00 SF	Accessory storage areas, mechanical equipment room	1
300	STAIR	204.67 SF	(none)		
301	STAIR	187.63 SF	(none)		
400	ELEV	61.68 SF	(none)		
TOTAL BUILDING OCCUPANT LOAD					386

LIFE SAFETY LEGEND

WALL & CEILING BARRIERS AND PARTITIONS

- 2 HR FIRE BARRIER
- 1 HR FIRE BARRIER
- NON-RATED PARTITION

NOTE: ALL RATED CONSTRUCTION IS ALSO SMOKE RESISTIVE CONSTRUCTION

EXIT / EGRESS SYMBOLS

- EXIT DISCHARGE
- CALCULATED OCCUPANTS TO EXIT (IF APPLICABLE)
- DIRECTIONAL ILLUMINATED EXIT SIGN

TRAVEL DISTANCE LIMITATIONS

EXIT (199') (MAXIMUM 200'-0")

FIRE PROTECTION & ALARM DEVICES

- FEC FIRE EXTINGUISHER - BRACKET MOUNTED
- FIRE EXTINGUISHER CABINET

EXIT DISCHARGE CAPACITY BY DOOR

EXIT OPENING CAPACITY (TYP)

- 32.75" CLEAR WIDTH 3'-0" DOOR
- 44.75" CLEAR WIDTH 4'-0" DOOR
- 45.375" LEAF CLEAR WIDTH 4'-0" DOOR
- 66.75" CLEAR WIDTH PAIR 3'-0" DOOR
- 82.75" CLEAR WIDTH PAIR 3'-8" DOOR
- 86.75" CLEAR WIDTH PAIR 3'-10" DOOR

GENERAL NOTES

- FIRE EXTINGUISHER CABINETS SHALL BE LOCATED SO THAT THE MAXIMUM TRAVEL DISTANCE SHALL NOT EXCEED 75'-0"
- MINIMUM EGRESS WIDTH PER OCCUPANT AT STAIRS = 0.3' PER OCCUPANT. MINIMUM EGRESS WIDTH PER OCCUPANT AT OTHER EGRESS COMPONENTS = 0.2' PER OCCUPANT (TABLE 1005.1)
- ALL RATED ASSEMBLY AND SMOKE BARRIER ASSEMBLY SHALL BE STENCILED WITH THE RELEVANT DESIGNATION AS FOLLOWS:
 - 3" TALL LETTERS IN RED INK OR PAINT
 - APPLIED AT ALL CONCEALED LOCATIONS (EG. ABOVE CEILINGS AND INSIDE ELEVATOR SHAFTS) @ 8'-0" c.c. MAXIMUM.

FIRE PROOFING NOTES

- ALL FIREPROOFING DESIGNS SHOULD BE CONSIDERED THERMALLY UNRESTRAINED.
- SPRAYED FIREPROOFING FOR STRUCTURAL MEMBERS WITH W/D OR A/P RATIOS OTHER THAN THE SPECIFIED U/L DESIGN WILL BE ADJUSTED IN ACCORDANCE WITH THE ADJUSTMENT OF SPRAYED PROTECTION MATERIAL THICKNESS FOR UNRESTRAINED RATINGS FOR VARIOUS BEAM AND COLUMN SIZES AS FOUND IN THE MOST CURRENT EDITION OF THE U/L FIRE RESISTANCE DIRECTORY.
- ALL BEAMS AND COLUMNS SHALL BE ADJUSTED USING W/D OR A/P RATIOS TO DETERMINE THE CORRECT FIREPROOFING THICKNESS.

CODE ANALYSIS SUMMARY

USE GROUP MATRIX:

OFFICE BUILDING	2021 IBC BUSINESS - B (NONSEPARATED USE w MIXED USE)	2018 NFPA 101 NEW OFFICE BUILDING (NONSEPARATED USE w MIXED USE)
-----------------	--	--

CONSTRUCTION TYPE MATRIX:

OFFICE BUILDING	2021 IBC TYPE II B FULLY SPRINKLERED (NFPA 13)	2018 NFPA 101 TYPE II (000) FULLY SPRINKLERED (NFPA 13)
-----------------	--	---

HEIGHT ANALYSIS:

OFFICE BUILDING	2021 IBC ALLOWABLE # STORIES / ALLOWABLE HEIGHT	2018 NFPA 101 ALLOWABLE # STORIES / ALLOWABLE HEIGHT	ACTUAL # OF STORIES / ACTUAL HEIGHT
	4 STORY / 75 FEET	N/A	2 STORY / 30'-5" FEET

ALLOWABLE AREA TABLE

FLOOR	B (BUSINESS) AREA %	A3 (ASSEMBLY) AREA %	R2 (RESIDENTIAL) AREA %	TOTAL AREA %	TABULAR ALLOWABLE AREA PER FLOOR (IBC 2021 TABLE 506.2)
1	11,665 SQ. FT. 85%	2,105 SQ. FT. 15%	0	13,770 SF FT. 100%	B 69,000 (SM) A3 38,000 (S1) - A3 RULES (SEE NOTE BELOW) R2 N/A
2	5,797 SQ. FT. 83%	521 SQ. FT. 7.5%	660 SQ. FT. 9.5%	6,978 SF FT. 100%	B 69,000 (SM) - B RULES A3 (28,500 SM - ACCESSORY < 10%) R2 (48,000 SM - ACCESSORY < 10%)

20746 SF TOTAL AREA BOTH FLOORS

NOTES:

- FLOOR 1 UNSEPARATED AS AND B OCCUPANCY. LIMITING OCCUPANCY IS A3.
- A3 AS CALCULATED WITH 91 ALLOWABLE LIMIT. SINCE SECOND FLOOR A3 IS ACCESSORY. IF SM IS USED, ALLOWABLE A3 IS 26500, AND STILL PASSES AT 13770 ACTUAL SF.
- FLOOR 2 IS B OCCUPANCY WITH ACCESSORY A3 AND R2 OCCUPANCIES. <10% EACH.
- OVERALL OCCUPANCY CLASSIFICATION IS B. LIMITED TO A3 ON FIRST FLOOR.
- PERIMETER ACCESS ALLOWANCES ARE NOT NEEDED AND NOT USED.
- BUILDING IS FULLY SPRINKLERED, INCLUDING CONNECTOR.

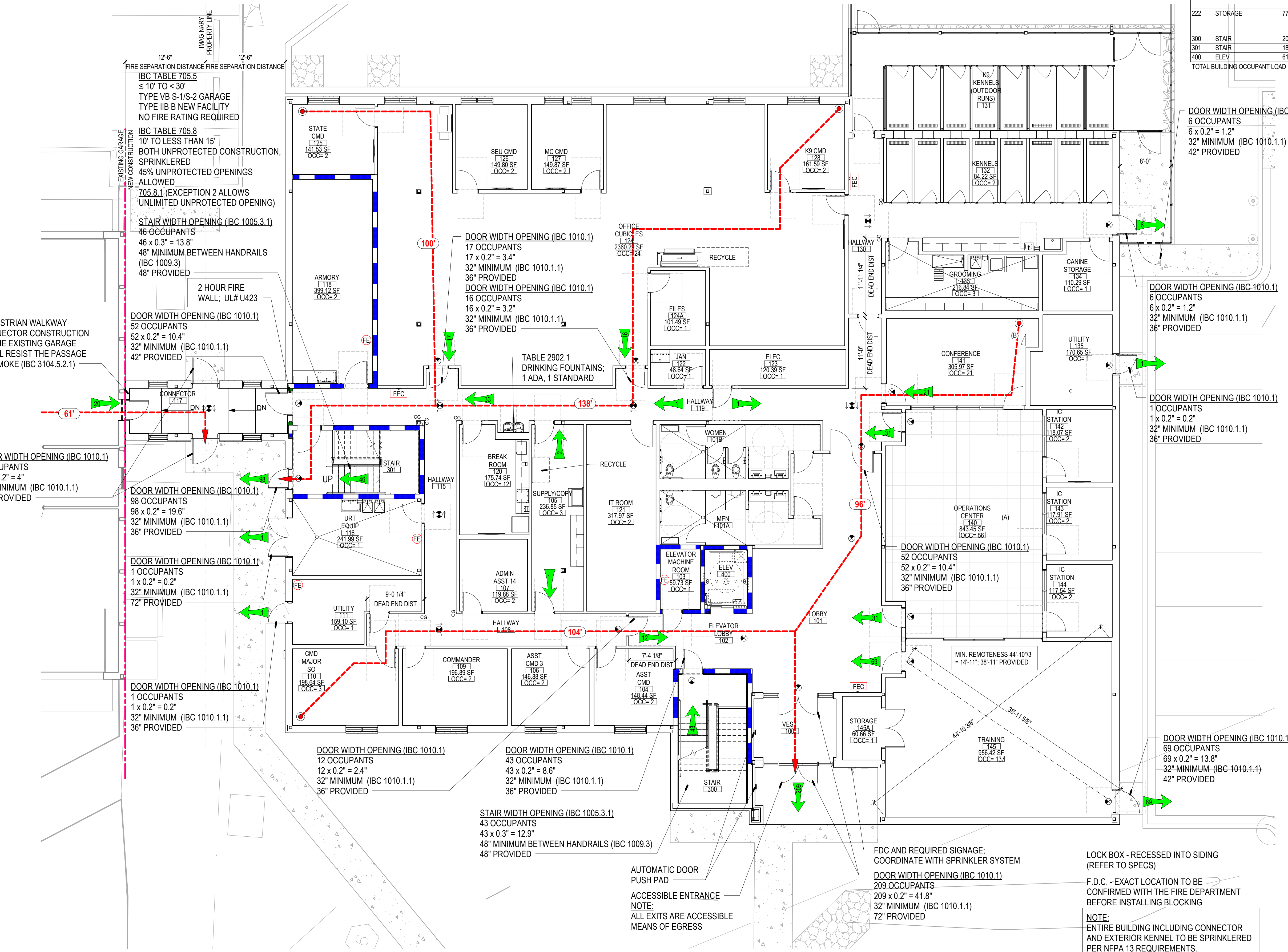
FIRE RESISTANCE SCHEDULE:

STRUCTURAL FRAME (COLUMNS, GIRDERS, TRUSSES)	2021 IBC	NFPA 101	PROVIDED	REMARKS
STRUCTURAL FRAME (COLUMNS, GIRDERS, TRUSSES)	0 HOUR	0 HOUR	0 HOUR	
EXTERIOR BEARING WALLS	0 HOUR	0 HOUR	N/A	
INTERIOR BEARING WALLS	0 HOUR	0 HOUR	N/A	
FLOOR CONSTRUCTION	0 HOUR	0 HOUR	N/A	
ROOF CONSTRUCTION	0 HOUR	0 HOUR	1 HOUR	HORIZ SHAFT WALL ROOF/CEILING CAP ICC REPORT INER-258 (ELEVATOR & STAIR TOWER)
FIRE WALLS	N/A	N/A	2 HOUR	UL# U415 @ CONNECTOR LINK AND NEW CONST. UL# U423 @ CONNECTOR AND EXISTING STRUCTURE
FIRE BARRIER	1 HOUR w/ 3/4 HOUR OPENINGS	1 HOUR w/ 3/4 HOUR OPENINGS	N/A	UL# U905 (ELEVATOR & STAIRS)
FIRE PARTITION	1 HOUR w/ 1/3 HOUR OPENINGS	1 HOUR w/ 1/3 HOUR OPENINGS	N/A	UL# U419 (AROUND SLEEPING ROOMS - 30 MIN RATING)
SMOKE BARRIER	1 HOUR w/ 1/3 HOUR OPENINGS	1 HOUR w/ 1/3 HOUR OPENINGS	N/A	
SMOKE PARTITION (CORRIDORS)	0 HOUR	0 HOUR	N/A	

GROSS AREA:

FLOOR	AREA (GROSS SQ. FT.)
FIRST FLOOR	13,770 SQ. FT.
SECOND FLOOR	6,978 SQ. FT.
TOTAL	20,748 SQ. FT.

NOTE: TOTAL OF ASSEMBLY SPACE OVER 750 SQ. FT. = 1,849 SQ. FT., LESS THAN 10% OF BUILDING AREA. FOR 2-STORY BUILDINGS MIXED USE IS CONSIDERED IN TOTAL, NOT BY FLOOR.



1 FIRST FLOOR EGRESS PLAN
 1/8" = 1'-0"

CHAPTER 29 - PLUMBING SYSTEMS (TABLE 2902.1)

FIXTURE TYPE	FIXTURES REQUIRED PER CODE	FIXTURES PROVIDED
WATER CLOSETS	B	
URINALS	Not required - Optional substitution for no more than 50% of all water closets. (IPC 419.2)	3 of 10 Public W/C
LAVATORIES	1 - 1st 80 = 40 / Gender, 1 each next 50 = 4 male / 4 female (Public)	4 Male / 4 female
SHOWERS	Not required	2 Showers
DRINKING FOUNTAINS	1 per floor	2
MOP SINKS	1 per floor	2

NOTE: SLEEPING UNITS OCCUPANTS INCLUDED IN CALCULATIONS SLEEPING FIXTURES OMITTED FROM CALCULATIONS

SCALE: 1/8" = 1'-0"

PROJECT TEAM

NOELKER AND HULL ASSOCIATES, INC. ARCHITECTS
 6 NORTH EAST STREET, SUITE 300
 FREDERICK, MD | 21701-5680
 P: 301.662.8611 | F: 301.662.8632
 NOELKERHULL.COM

A. Morton Thomas and Assoc. Inc. Civil Engineers
 800 King Farm Boulevard | 14th Floor
 Rockville, MD | 20850
 P: 301.881.2545 | F: 301.881.0814

Advanced Consulting Engineers P.A. Structural Engineers
 5235 Westview Drive
 Suite 100
 Frederick, MD | 21703
 P: 301.256.8884

Weigand Associates, Inc. MEP Engineers
 20270 Goldenrod Lane
 Suite 100
 Germantown, MD | 20876
 P: 301.540.9060 | F: 301.540.9061

Wright Engineering, LLC Data / Communications
 853 Ripple Stream Court
 Joppa, MD | 21085
 P: 410.877.6297 | F: 866.635.0374

PROJECT INFORMATION

PROJECT TITLE: MARYLAND STATE POLICE TACTICAL SERVICES OPERATIONS & COMMAND BUILDING

PROJECT ADDRESS: 7777 Washington Boulevard Jessup, MD 20794

PROJECT OWNER: Maryland DEPARTMENT OF GENERAL SERVICES

SHEET INFORMATION

KEY PLAN: (Diagram showing location of this sheet on the floor plan)

ISSUED FOR:

DESCRIPTION:	DATE:
FOR BIDDING	09/05/2023

CAD DWG FILE:
 DRAWN BY: NHA
 CHK'D BY: NHA

JOB NUMBER: 21921 & DGS PA-745-210-001
ISSUE DATE: 09/05/2023
SHEET TITLE: FIRST FLOOR EGRESS PLAN

SHEET NUMBER: G003
 SHEET 3 OF 167
 © 2023 NOELKER AND HULL ASSOCIATES, INC.

