

Provide Construction Services for Replacement of
Graceland Park/O'Donnell Heights Elementary/Middle School #240 and
Holabird Elementary/Middle School #229
Baltimore City Public Schools (City Schools)

**Baltimore City Public Schools "City Schools"
Material Management Department.
200 E. North Avenue, Room #401
Baltimore, MD 21202**



ADDENDUM #3

September 8, 2017

Solicitation: IFB-18017

Response Due Date: September 21, 2017 at 11:00 a.m.

**Provide Construction Services for Replacement of
Graceland Park/O'Donnell Heights Elementary/Middle School #240
and
Holabird Elementary/Middle School #229**

TO THE BIDDERS: PLEASE ATTACH TO YOUR CONTRACT DOCUMENTS.

The following changes, additions, deletions and clarifications are hereby made part of the Contract Documents for the above referenced project and shall be taken into account in the preparation of the proposals and execution of all work. Vendors shall acknowledge receipt of this addendum on the Contract Proposal Form.

Notice: The following changes and additions should be considered as amendments to the above referenced bid documents.

BID DOCUMENT REVISIONS:

Item #1:

Question:

Rules for Qualification of contractors, paragraph 6.9 stated that, "A prime contractor shall not be awarded a contract if the total contract value, when added to the contractor's uncompleted backlog of work at the time of the award . . . exceed the contractor's assigned capacity rating". Please clarify if the uncompleted backlog of work refers to the projects ONLY with Baltimore City of Public Schools.

Response:

The Baltimore City Public Schools does not provide interpretations of, or advice on, Baltimore City's regulations. Contractors are urged to contact Jovan Griffin at 410-396-6883 for answers to its questions about Baltimore City regulations.

Provide Construction Services for Replacement of
Graceland Park/O'Donnell Heights Elementary/Middle School #240 and
Holabird Elementary/Middle School #229
Baltimore City Public Schools (City Schools)

Item #2:

Prospective contractors for your information please find attached to this Addendum #3 additional info related to the Construction Services for Replacement of Graceland Park/O'Donnell Heights Elementary/Middle School #240 and Holabird Elementary/Middle School #229.

All other terms and conditions shall remain unchanged.

Failure to acknowledge and respond to this addendums on the Bid Proposal Form may result in the Bid Proposal being considered non-responsive.

September 8, 2017

**GRACELAND PARK/O'DONNELL HEIGHTS ELEMENTARY/MIDDLE SCHOOL #240
BALTIMORE, MARYLAND
ADDENDUM #3**

TO THE CONTRACT DRAWINGS AND SPECIFICATIONS FOR THE REFERENCED PROJECT, DATED March 13, 2017, AS PREPARED BY GRIMM AND PARKER ARCHITECTS, 11720 BELTSVILLE DRIVE, SUITE 600, CALVERTON, MD 20705.

This Addendum includes changes and clarifications to the Contract Documents. This information includes the following:

I. **GENERAL:**

None

II. **BID RFIS**

ITEM NO. BID RFI-01

The following specs or plans are missing, incomplete, or illegible. Please provide.

Graceland: 10 75 00 - Flagpoles

Graceland: A4.5, A8.1, M-4.3, M-5.0, M-5.6, E-2.2

Holabird: A5.5

Response

The drawing and spec PDFs on the flashdrives appear to be complete. If a Contractor is missing sheets or specifications, please visit Procurement to get a replacement flashdrive.

ITEM NO. BID RFI-02 (HOLABIRD ONLY)

Addendum #1 added two 600 amp fusible disconnect switches to serve the PV Panels at Graceland with Note 42 on Drawing E-2.1G. Two symbols for disconnect switches appear on Drawing E-2.1H for Holabird but have no respective note. Please advise if the disconnect switches added for Holabird on Drawing E-2.1H are also for the PV Panels and should be 600 amp fused at 500 amp similar to Graceland.

Response

The two symbols for disconnect switches on Drawing E-2.1H for Holabird are for the solar disconnects. These disconnects are needed for Utility shutoff. These shall match 600A ampacity/500A fuse size and key note 42 as seen and defined on Graceland Drawing E-2.1G. See attached Sketch SK-E-1.15 for new note 41 and revisions to Room 1407 at Holabird.

ITEM NO. BID RFI-03 (HOLABIRD ONLY)

Addendum #1 added two 600 amp fusible disconnect switches to serve the PV Panels at Graceland with Note 42 on Drawing E-2.1G. Two symbols for disconnect switches appear on Drawing E-2.1H for Holabird but have no respective note. Please advise if the disconnect switches added for Holabird on Drawing E-2.1H are also for the PV Panels and should be 600 amp fused at 500 amp similar to Graceland.

Response

The two symbols for disconnect switches on Drawing E-2.1H for Holabird are for the solar disconnects. These disconnects are needed for Utility shutoff. These shall match 600A ampacity/500A fuse size and key note 42 as seen and defined on Graceland Drawing E-2.1G. See attached Sketch SK-E-1.15 for new note 41 and revisions to Room 1407 at Holabird.

ITEM NO. BID RFI-04

1. Section 074313 Metal Wall Panels specs noted Type M1, Type M2, Type M3 & Type M4. Drawings shown Types 1, 2 & 3. Please clarify.
2. Section 074215 Perforated metal plate wall panels – please provide location.
3. Drawing ED-1.1 Partial (lighting) Demolition Plans is missing from both our electronic and hard copy sets.

Response

1. Metal wall panels specified relate to drawings as follows:
Specification Type M1 = Drawing Type 1; Specification Type M2 = Drawing Type2;
Specification Type M32 = Drawing Type3; Specification Type M4 = Drawing Type4.
2. Section 07 42 15 is not required
3. Drawing ED-1 for Holabird was missing and is included in this Addendum.

ITEM NO. BID RFI-05

Section 071800 Traffic Coatings – Please provide locations where this product to be applied.

Response

Provide traffic coatings at Mechanical rooms 2100, 2101, 2201 and 2501.

ITEM NO. BID RFI-06

For the Photovoltaic trackers, is there consideration for wind loads and mounting in frame work of buildings for trackers?

Response

This will be responded to in the next Addendum.

ITEM NO. BID RFI-07

1. Section 071800 Traffic Coatings – Please provide locations where this product to be applied.

Response

1. See response to BID RFI-06 above.

ITEM NO. BID RFI-08 (HOLABIRD ONLY)

6. Holabird EMS - Addendum 1, Item 13, Section 10 00 05 Miscellaneous Specialties, Part 1.1.D.3.3. Not Used. Please clarify if interior pond is not part of the bid, although it's noted on the drawing, per A5.6.

Response

Specification is not required. Interior pond is not part of the requirement for Holabird. At Holabird it will be a planter for potted plants (potted plants by Owner).

III. **SPECIFICATION ITEMS:**

ITEM NO. S1 **TABLE OF CONTENTS**

DELETE Delete Section 07 42 15 PERFORATED METAL PLATE WALL PANELS

ITEM NO. S2 **07 42 15 PERFORATED METAL PLATE WALL PANELS**

DELETE Delete Section in its entirety.

IV. **DRAWING ITEMS:**

ARCHITECTURAL

ITEM NO. A1 **A-3.1 FINISH SCHEDULE**

REVISE Floor for Mechanical Rooms 2100, 2101, 2201, and 2501 to be "TRF" Traffic Coating

End of Info for Addendum #3

September 8, 2017

**HOLABIRD ELEMENTARY/MIDDLE SCHOOL #229
BALTIMORE, MARYLAND
ADDENDUM #3**

TO THE CONTRACT DRAWINGS AND SPECIFICATIONS FOR THE REFERENCED PROJECT, DATED March 13, 2017, AS PREPARED BY GRIMM AND PARKER ARCHITECTS, 11720 BELTSVILLE DRIVE, SUITE 600, CALVERTON, MD 20705.

This Addendum includes changes and clarifications to the Contract Documents. This information includes the following:

I. **GENERAL:**

None

II. **BID RFIS**

ITEM NO. BID RFI-01

The following specs or plans are missing, incomplete, or illegible. Please provide.

Graceland: 10 75 00 - Flagpoles

Graceland: A4.5, A8.1, M-4.3, M-5.0, M-5.6, E-2.2

Holabird: A5.5

Response

The drawing and spec PDFs on the flashdrives appear to be complete. If a Contractor is missing sheets or specifications, please visit Procurement to get a replacement flashdrive.

ITEM NO. BID RFI-02 (HOLABIRD ONLY)

Addendum #1 added two 600 amp fusible disconnect switches to serve the PV Panels at Graceland with Note 42 on Drawing E-2.1G. Two symbols for disconnect switches appear on Drawing E-2.1H for Holabird but have no respective note. Please advise if the disconnect switches added for Holabird on Drawing E-2.1H are also for the PV Panels and should be 600 amp fused at 500 amp similar to Graceland.

Response

The two symbols for disconnect switches on Drawing E-2.1H for Holabird are for the solar disconnects. These disconnects are needed for Utility shutoff. These shall match 600A ampacity/500A fuse size and key note 42 as seen and defined on Graceland Drawing E-2.1G. See attached Sketch SK-E-1.15 for new note 41 and revisions to Room 1407 at Holabird.

ITEM NO. BID RFI-03 (HOLABIRD ONLY)

Addendum #1 added two 600 amp fusible disconnect switches to serve the PV Panels at Graceland with Note 42 on Drawing E-2.1G. Two symbols for disconnect switches appear on Drawing E-2.1H for Holabird but have no respective note. Please advise if the disconnect switches added for Holabird on Drawing E-2.1H are also for the PV Panels and should be 600 amp fused at 500 amp similar to Graceland.

Response

The two symbols for disconnect switches on Drawing E-2.1H for Holabird are for the solar disconnects. These disconnects are needed for Utility shutoff. These shall match 600A ampacity/500A fuse size and key note 42 as seen and defined on Graceland Drawing E-2.1G. See attached Sketch SK-E-1.15 for new note 41 and revisions to Room 1407 at Holabird.

ITEM NO. BID RFI-04

1. Section 074313 Metal Wall Panels specs noted Type M1, Type M2, Type M3 & Type M4. Drawings shown Types 1, 2 & 3. Please clarify.
2. Section 074215 Perforated metal plate wall panels – please provide location.
3. Drawing ED-1.1 Partial (lighting) Demolition Plans is missing from both our electronic and hard copy sets.

Response

1. Metal wall panels specified relate to drawings as follows:
Specification Type M1 = Drawing Type 1; Specification Type M2 = Drawing Type2;
Specification Type M32 = Drawing Type3; Specification Type M4 = Drawing Type4.
2. Section 07 42 15 is not required
3. Drawing ED-1 for Holabird was missing and is included in this Addendum.

ITEM NO. BID RFI-05

Section 071800 Traffic Coatings – Please provide locations where this product to be applied.

Response

Provide traffic coatings at Mechanical rooms 2100, 2101, 2201 and 2501.

ITEM NO. BID RFI-06

For the Photovoltaic trackers, is there consideration for wind loads and mounting in frame work of buildings for trackers?

Response

This will be responded to in the next Addendum.

ITEM NO. BID RFI-07

1. Section 071800 Traffic Coatings – Please provide locations where this product to be applied.

Response

1. See response to BID RFI-06 above.

ITEM NO. BID RFI-08 (HOLABIRD ONLY)

6. Holabird EMS - Addendum 1, Item 13, Section 10 00 05 Miscellaneous Specialties, Part 1.1.D.3.3. Not Used. Please clarify if interior pond is not part of the bid, although it's noted on the drawing, per A5.6.

Response

Specification is not required. Interior pond is not part of the requirement for Holabird. At Holabird it will be a planter for potted plants (potted plants by Owner).

III. SPECIFICATION ITEMS:

ITEM NO. S1 TABLE OF CONTENTS

DELETE Delete Section 07 42 15 PERFORATED METAL PLATE WALL PANELS

ITEM NO. S2 07 42 15 PERFORATED METAL PLATE WALL PANELS

DELETE Delete Section in its entirety.

IV. DRAWING ITEMS:

ARCHITECTURAL

ITEM NO. A1 A-3.1 FINISH SCHEDULE

REVISE Floor for Mechanical Rooms 2100, 2101, 2201, and 2501 to be "TRF" Traffic Coating

ELECTRICAL

ITEM NO. E1 ED-1.1 PARTIAL DEMOLITION PLANS

ADD Add attached Sheet ED-1.1 for Holabird.

ITEM NO. E2 E-2.1H PARTIAL FIRST FLOOR POWER PLAN – AREA A

REVISE Add Note 41 and Revise drawing in Electrical Room 1407 per attached sketch SK-E-1.15.

End of Info for Addendum #3

18 | 17 | 16 | 15 | 14 | 13 | 12 | 11 | 10 | 9 | 8 | 7 | 6 | 5 | 4 | 3 | 2 | 1

M

L

K

J

H

G

F

E

D

C

B

A

M

L

K

J

H

G

F

E

D

C

B

A

TAGGED NOTES	
L9	DEMOLISH EXISTING LIGHTING IN ROOM. DEMOLISH CONDUITS BACK TO EXISTING BUILDING AND CAP. DEMOLISH WIRING BACK TO SOURCE. DEMOLISH STAGE LIGHTING CONTROL PANEL. MAINTAIN CIRCUITING OF EXISTING TO REMAIN DEVICES ACCORDINGLY. PROVIDE NEW CONDUIT/WIRE ACCORDINGLY FOR EXISTING TO REMAIN DEVICES.
L10	DEMOLISH EXISTING LIGHTING LOCATED ON PORTION OF BUILDING BEING DEMOLISHED. MAINTAIN CIRCUITING OF EXISTING TO REMAIN DEVICES ACCORDINGLY. PROVIDE NEW CONDUIT/WIRE ACCORDINGLY FOR EXISTING TO REMAIN DEVICES.



1 GYM DEMO
SCALE: 1/8" = 1'-0"
0 2 4 8 16 24 32



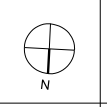
GP# 21553

DATE	DESCRIPTION

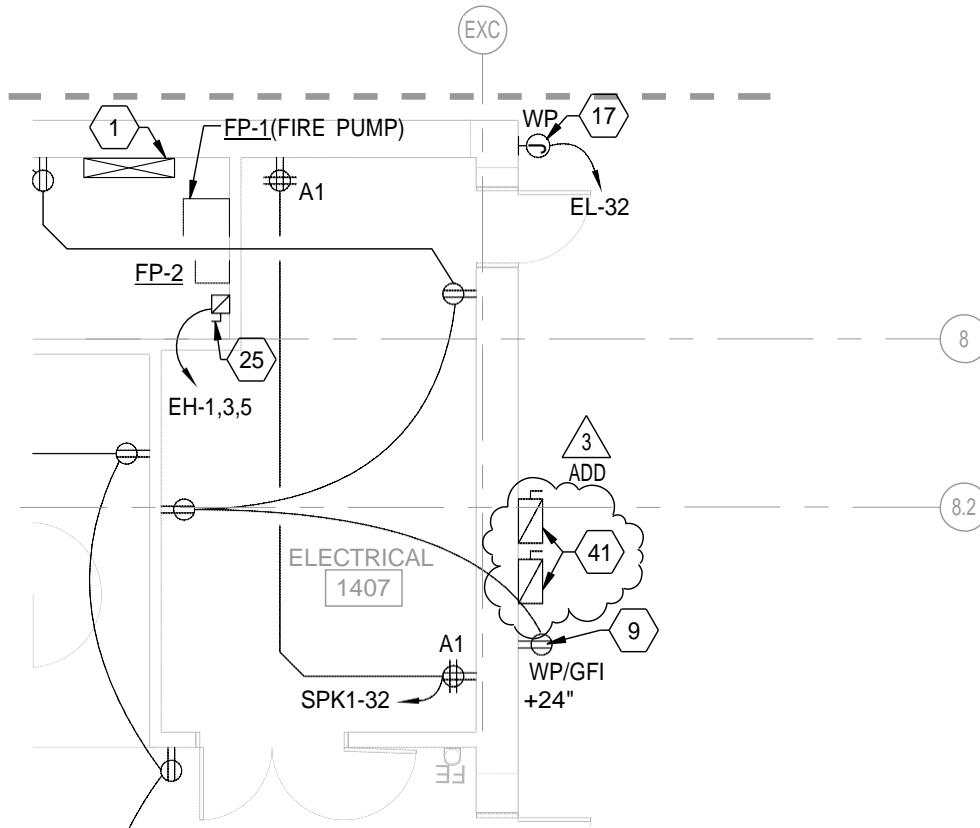
ED-1.1

03/13/2017
BID SET

© GRIMM AND PARKER, P.C. 2014



18 | 17 | 16 | 15 | 14 | 13 | 12 | 11 | 10 | 9 | 8 | 7 | 6 | 5 | 4 | 3 | 2 | 1



1
SK-E-1.15

PARTIAL FIRST FLOOR ELECTRICAL ROOM #1407 - ADD#1

SCALE: 1/8" = 1'-0"

3
ADD

SHEET KEYNOTES

41. CONTRACTOR TO PROVIDE AND LOCATE TWO(2) NEMA 3R 600A DISCONNECT SWITCHES WITH 500A FUSE OUTSIDE FOR BALTIMORE GAS AND ELECTRIC PV SHUTOFF. THESE DISCONNECTS WILL SERVE PANELS PV1 AND PV2. PROVIDE SIGNAGE AT THE METER AS REQUIRED TO INDICATE THE LOCATION OF DISCONNECT SWITCHES.

HOLABIRD K-8

ELECTRICAL ROOM

SCALE: 1/8" = 1'-0"

DATE

09/06/17

ADD

SK-E-1.15



11720 Beltsville Drive
Suite 600
Calverton, MD 20705

www.grimmandparker.com