

ADDENDUM No. 2

March 30, 2016

Little Sisters of the Poor Main Street Renovations
601 Maiden Choice Lane, Baltimore MD 21228

Project No: 15046.00

ARCHITECT:

Gaudreau, Inc.
810 Light Street
Baltimore, Maryland 21230
410.837.5040

This Addendum forms part of the Contract Documents and modifies the original Bidding Documents dated March 4, 2016. Acknowledge receipt of this addendum in the space provided on the Bid Form. Failure to do so may subject Bidder to disqualification.

CHANGES TO SPECIFICATIONS:

1. Section 220500 Common Work for Plumbing:
 - a. Article 2.2.G: Add P-11 Coffee Maker
 - b. Article 2.2.G: Revise P-8, P-9, P-11 basis of design to "Gray Guy Box"

CHANGES TO DRAWINGS:

ARCHITECTURALS

1. Drawing A-114: clarification: the minimum R-value indicated on the roof details shall be R-30 (per IECC code) except at the roof drains where the insulation may be reduced by 1" to R-25.
2. Drawings A-511, A-512 & A-613: although front set glazing is indicated in the storefront details, all the storefront framing shall be equal to Kawneer 451UT (per the specifications) in order to meet the IECC code.

MECHANICAL & PLUMBING

1. Drawing P-110: see attached sketch P-SK-110-01 for added court yard hose bib.
2. Drawing P-111: see attached sketch P-SK-111-01 for updates as follows:
 - a. Added water lines for coffee makers to Sip and Chat and Pantry.
 - b. Revised Sip & Chat sink to two-compartment sink.
 - c. Added hose bib to courtyard.
3. Drawing P-610: see revised drawing for updates to the Plumbing Fixture Schedule and the Sanitary Riser diagram
4. Drawing M-111: see attached sketch M-SK-111-01 for modified ductwork for FCU M-1 and FCU M-4.
5. Drawing M-611: see attached sketch M-SK-611-01 for revised zoning for Chaplain M-117 which is now zoned with the Library.
6. Drawing M-612: see attached sketch M-SK-612-01 for revisions to the Fan Coil Unit Schedule.
 - a. FCU M-1 and FCU M-4 have revised airflow quantities.

Little Sisters of the Poor Main Street Renovations
Addendum No. 2
03/30/2016

- b. FCU M-10 through FCU M-31 are Vertical Cabinets in lieu of Low Vertical Cabinets.

ELECTRICAL

1. Drawing E-111: see attached sketch E-SK-111-01 for added floor receptacle in Main Street M-101.
2. Drawing E-211: see revised drawing for:
 - a. Updated lighting in rooms M-100, M-101, M-102, M-103, M-109, M-112 & M-116.
 - b. Added exterior lighting.
3. Drawing E-311: see revised drawing for:
 - a. Additional fire alarm devices in M-104 & M-108.
 - b. Additional telephone in north corridor.
- c. Drawing E-601: see attached sketch E-SK-601-01 for modifications to the lighting fixture schedule.

Attachments:

1. (1) Revised specification section, 220500 Common Work for Plumbing
2. (7) sketches as listed above.
3. (2) Reissued drawings, E-211 and E-311

END OF ADDENDUM No. 2

March 11, 2016

SECTION 220500

COMMON WORK RESULTS FOR PLUMBING

PART 1 - GENERAL

1.1 NOTE

- A. The requirements of Section 220000 apply to work performed under this Section.

1.2 SCOPE

- A. The work under this Section of the Specification shall include the furnishing of labor, materials and equipment for the installation of complete plumbing systems, including interior sanitary soil, waste and vent piping; storm, interior domestic hot, hot water re-circulating and cold water piping, plumbing fixtures and appliances to provide continuous and satisfactory service.

1.3 CONNECTIONS TO EQUIPMENT

- A. Provide labor and materials to connect equipment furnished under this Section of the Specification.
- B. Provide labor and materials to connect equipment furnished under other Sections of the Specification as well as owner furnished fixtures and requiring plumbing connections as if the equipment was furnished under this Section of the Specification. Provide traps, water stop valves, etc., for equipment requiring such connections to provide functioning systems.

PART 2 - PRODUCTS

2.1 CLEANOUTS

- A. Cleanouts shall be provided at ends of runs, at changes of direction and near the base of each vertical soil, waste, or drain pipe. Cleanouts shall be placed on horizontal lines every 50 feet unless the conditions require them at closer intervals. Cleanouts at the base of vertical pipes shall be placed in a fitting just above the floor. Cleanouts shall consist of Y branches or 1/4 bends the full size of the line for piping 4 inches and smaller, and 4 inches for larger pipes. Cleanouts in horizontal lines shall be extended to floor level or grade as necessary. Cleanouts shall be Zurn series as listed below or approved equal:
 - 1. Below concrete floors with no finish or ceramic tile finish.
 - a. Zurn- ZN-1400-3
 - 2. Below carpeted floors (flush with concrete with identification screw through carpet).
 - a. Zurn - ZN-1400-15
 - 3. Below resilient tile floors.
 - a. Zurn - ZN-1400-7
 - 4. Exposed horizontal piping.

March 11, 2016

5.
 - a. Zurn - Z-1440A
Concealed in finished wall-prime coat.
 - a. Zurn - Z-1440-1
 6. Base of exposed vertical pipes.
 - a. Zurn - Z-1445
 7. Base of concealed vertical pipes.
 - a. Zurn - Z-1445-1
- B. Cleanouts shall consist of cast iron ferrules and shall seat against a lead seal. Access covers shall be polished nickel bronze in finished areas, brass below carpeting. Access covers will be secured by non-ferrous tamperproof screws.

2.2 PLUMBING FIXTURES

- A. Provide plumbing fixtures as shown on the Drawings or as described herein. Exposed metal parts of fixtures, including faucets, waste fittings, waste plugs, strainers, flush valves, traps, supply and waste pipes and escutcheons shall be brass, chromium plated.
- B. Mounting Heights of Fixtures
1. To provide for the physically disabled, plumbing fixtures shall be provided for their use at a mounting height suitable for the disabled as set forth by the Federal Government. Fixtures for special uses need not meet this requirement. Fixture mounting heights are generally indicated on the drawings.
 2. Hot water and drain piping accessible to a wheelchair person shall be suitably protected against high temperature by molded vinyl piping covers with access to shut-off valves, trap cleanout, etc. Insulation shall have out of sight fastening system, tie bands are not approved. Covers shall be Truebro 105/102.
- C. Hot and cold water connections to fixtures shall be provided with a stop valve. Stop valves, risers, etc. shall be (commercial/institutional grade as manufactured by Brass Craft, Chicago, Engineered Systems or McGuire).
- D. Provide metal supports necessary to adequately and substantially hang and set fixtures. Supports shall be Zurn, Josam or J. R. Smith and suitable for the wall thickness and piping arrangements shown.
- E. Plumbing fixtures shall be caulked at wall and floor with silicone caulking material of same color as the fixture.
- F. For sinks and fixtures specified under other Divisions or other contracts and not provided with faucets, tailpieces, traps, backflow prevention devices, and stop valves; provide necessary fittings and completely connect the sinks and fixtures.
- G. Fixtures shall be as follows (Refer to the Plumbing Fixture Schedule for additional information, flush valves, trim, etc.):
1. P-1 Water Closet: #2467.016 (pressure assisted) Elongated 16 1/2" high, water saver Cadet 1.6 gallon flush with vitreous china construction, siphon jet action bowl, close-coupled tank, water saver trim, bolt caps, closet flange, Church-open front seat with cover, rigid supply with angle stop valve.
 2. P-1A Water Closet: #2337.100 (pressure assisted) Elongated 17" high, water saver Cadet 1.6 gallon flush with vitreous china construction, siphon jet action

March 11, 2016

- bowl, close-coupled tank, water saver trim, bolt caps, closet flange, Church-open front seat with cover, rigid supply with angle stop valve.
3. P-3 Countertop Lavatory: #0475.020 Aqualyn countertop lavatory, self-rimming, vitreous china, front overflow. Provide Delta 3538-RBMPU-DST wide spread lavatory faucet with vandalproof wrist blade handles, grid drain, chrome supplies, stops and escutcheons. Also provide chrome tailpiece, trap and trap nipple.
 4. P-3A Countertop Lavatory: #0475.020 Aqualyn countertop lavatory, self-rimming, vitreous china, front overflow. Provide Delta 3538-RBMPU-DST wide spread lavatory with vandalproof wrist blade handles, grid drain, chrome supplies, stops and escutcheons, also provide chrome tailpiece, offset "P" trap and trap nipple. All exposed waste piping and hot and cold water piping shall be insulated with Truebro Handi Lav-Guard model 102 insulation kit with white finish.
 5. P-3B Lavatory: Wall hung #0356.015 Lucerne with vitreous china construction, front overflow, faucet ledge. Lavatory to be fitted with Delta 3538-RBMPU-DST center set faucet and complete with vandalproof wrist blade handles, grid drain, tailpiece, offset cast brass "P" trap, tubing to wall escutcheon, key operated supply valves with rigid supplies and chair carrier. All exposed waste piping and hot and cold water piping shall be insulated with Truebro Handi Lav-Guard model 102 insulation kit with white finish.
 6. P-4 Service Sink: Commercial Enameling Co. #871, 28" X 28" x 13" deep Floorwell with enameled cast iron construction, 3" outlet, drainage channels and B-872 coated wire rim guard. Fixture shall be fitted with American Standard #8344.112 Heritage faucet with wall to spout end, 10-3/4" spout, hose end connection integral vacuum breaker, spout brace, adjustable union couplings, stop shanks and B71 - 3"strainer.
 7. P-6A Kitchen Sink: Elkay #LRAD2922 stainless steel single compartment, 18 gauge, type 304 stainless steel, self-rimming, 3 hole with undercoating 25" x 22" x 8" overall size. Fitted with Delta #101-DST faucet with swing spout. Sink shall be complete with brass craft sink strainer, tailpiece, tubing to wall with escutcheon and supply kit consisting of 1/2" nipple, escutcheon. 1/2" angle valve with loose key stop and rigid supplies.
 8. P-6B Kitchen Sink: Elkay LRAD2222 stainless steel single compartment, 18 gauge, type 304 stainless steel, self-rimming, 3 hole with undercoating 25" x 22" x 8" overall size. Fitted with Delta 1977-DST faucet with swing. Sink shall be complete with brass craft sink strainer, tailpiece, tubing to wall with escutcheon and supply kit consisting of 1/2" nipple, escutcheon. 1/2" angle valve with loose key stop and rigid supplies.
 9. P-7 Dishwasher: Provided by owner, installed by contractor.
 10. P-8 Commercial Ice Maker – Provide with 8 x 8 inch plastic wall box with shut off valve and vacuum breaker. Provide NPT outlet to coordinate with size of hose kit furnished with approved ice machine. Provide 2" open site drain for ice maker drain.
 - a. Gray Guy Box
 11. P-9 Refrigerator Ice Maker – Provide with 8 x 8 inch plastic wall box with shut off valve and vacuum breaker. Provide NPT outlet to coordinate with size of hose kit furnished with approved ice machine.
 - a. Gray Guy Box
 12. P-10 Hair Salon Sink – Provided by others. Plumb services and provide shut-off valves.

March 11, 2016

13. P-11 Coffee Maker - Provide with 8 x 8 inch plastic wall box with shut off valve and vacuum breaker. Provide NPT outlet to coordinate with size of hose kit furnished with approved coffee maker.
 - a. Gray Guy Box

2.3 SHOCK ABSORBERS

- A. Provide shock absorbers in the water piping in horizontal runs to quick closing valves at the end of runs and where shown on drawing and elsewhere as required or as recommended by PDI to prevent noise or injury to the piping system resulting from water hammer.
- B. Shock absorbers shall be J. R. Smith Hydrotrol or Zurn Z-1700 Shocktrol. Unit shall consist of stainless steel casing and air charged bellows. Shock absorbers shall be sized as recommended in the Plumbing Drainage Institute Standard WH-201.

2.4 ELEVATOR OIL PUMP

- A. Provide submersible pump and control systems capable of pumping water while containing oil. The system shall function automatically and shall provide for an alarm in the event of (A) the presence of oil in the sump (B) high liquid in the sump or (C) high amps or a locked rotor condition
- B. The pump shall be a submersible type. The pump shall be approved to UL 778 standards and shall include thermal and overload protection. The motor shall be capable of operating continuously or intermittently. The motor housing shall be constructed of #304 stainless steel, and mechanical seals shall be housed in a separate oil-filled compartment.
- C. The control shall be approved to UL 508 standards and housed in a gasketed Nema 4x enclosure with stainless steel hinged hardware. The control shall include dual "Oil-Minder Relays" with variable sensitivity settings, magnetic contractor with separate over-current relay, self-cleaning stainless steel sensor probe, high decibel warning horn with illuminated red light and alarm silencing switch, dual floats, clearly marked terminal board and remote monitoring contact. All cables between the pump and control unit shall be 16' long (additional length available) and the cable and plug from the control unit shall be 8' long. The control unit, pump, floats, and sensor probe shall be factory assembled as a complete, ready to use system and shall be tested and approved by a nationally recognized testing laboratory such as ENTELA.
- D. Elevator sump pump shall be Stancor Oil Minder or approved equal.

2.5 VALVES

- A. Provide valves as indicated on Drawings, as specified below and as required. Valves, where possible, shall be of one manufacturer, Stockham, Nibco or Jenkins, Jomar whose figure numbers are used below.
- B. Valves 2 inches and smaller, which will be operated frequently, or will be used for throttling services, shall be ball or globe valves. Stop valves shall be ball valves.

March 11, 2016

- C. Valves in the domestic hot water, cold water and hot water recirculating system shall be:

Description	For Copper Tube <u>Nibco</u>
Ball - 2-1/2" and smaller, 2 piece full port, lead free	S-685
Ball – 3" and larger, 2 piece full port lead free	T-FP-600A-LF
Globe–2-1/2" and smaller, bronze solder end	S-211-Y
Check Valves 2-1/2" and smaller, bronze, swing solder end, lead free	S-413-Y

- D. Non-slam check valves shall be installed on discharge of pumps, in vertical piping and elsewhere as shown and shall be 125 pound wafer style iron body, bronze fitted with renewable seat and disc and spring actuator, Miller 162, NIBCO W910, Hager or Smolensky. (These model numbers are for valves 2 inches and larger, should be revised for smaller sizes.)

PART 3 - EXECUTION

3.1 SANITARY, VENT, CONDENSATE AND STORM PIPING

- A. Sanitary piping shall be extended from fixtures, appliances, etc., to the existing sanitary sewer. Verify location, size and elevation of the existing line before performing work and notify the Architect if discrepancies are noted.
- B. Lab waste and vent piping below floor to their connections to the existing piping sanitary in the second floor ceiling. Verify location, size and elevation of the existing lines before performing work and notify the Architect if discrepancies are noted.
- C. Connections and core drilling through the third floor shall be coordinated with the owner. Work shall be performed during off hours in the second floor. The second floor shall be brought back to its original occupied condition at the end of each weekend.
- D. Waste and vent piping within the building, above ground shall be schedule 40 PVC with glued fittings rated for DWV service. Provide 2 hour fire rated fire wrap for all piping within return air plenums. Alternately, piping may be cast iron with no-hub fittings or DWV copper where it is located in plenum spaces.
- E. Sanitary, condensate, vent and storm drain piping within the building, above ground shall be schedule 40 PVC with glued fittings rated for DWV service. Provide 2 hour fire rated fire wrap for all piping within return air plenums. Alternately, piping may be cast iron with no-hub fittings or DWV copper where it is located in plenum spaces.
- F. Drain piping from air conditioning units and cold box condensate pans above the ground and exposed in occupied spaces shall be type "L" hard drawn copper water tube, ASTM B88 with solder type wrought copper fittings, ANSI A40.3.

March 11, 2016

3.2 WATER PIPING

- A. Water piping inside the building shall be type "L" hard drawn copper water tube, ASTM B88 with solder type wrought copper fittings, ANSI A40.3. Brass solder joint valves shall be used with copper tubing. Solder shall be "lead free" type. Protect piping from materials which may cause corrosion of copper.
- B. Exposed piping at fixtures shall be IPS red brass, chromium plated.
- C. Mains, branches and connections of the hot and cold water distribution piping systems shall be provided with valves placed at the points shown on drawings or directed by the Architect for proper isolation and control of the system. Equipment or appliances shall be separately valved so that service can be shut off and the piece of equipment or appliance removed without disturbing the piping system. Valves shall be located so as to be accessible to the operator. Separate valves for equipment and appliances are in addition to faucets supplied herein or in other Sections.
- D. Provide for expansion of piping subject to temperature changes. This shall be accomplished by swings, bends or loops.

3.3 INSULATION

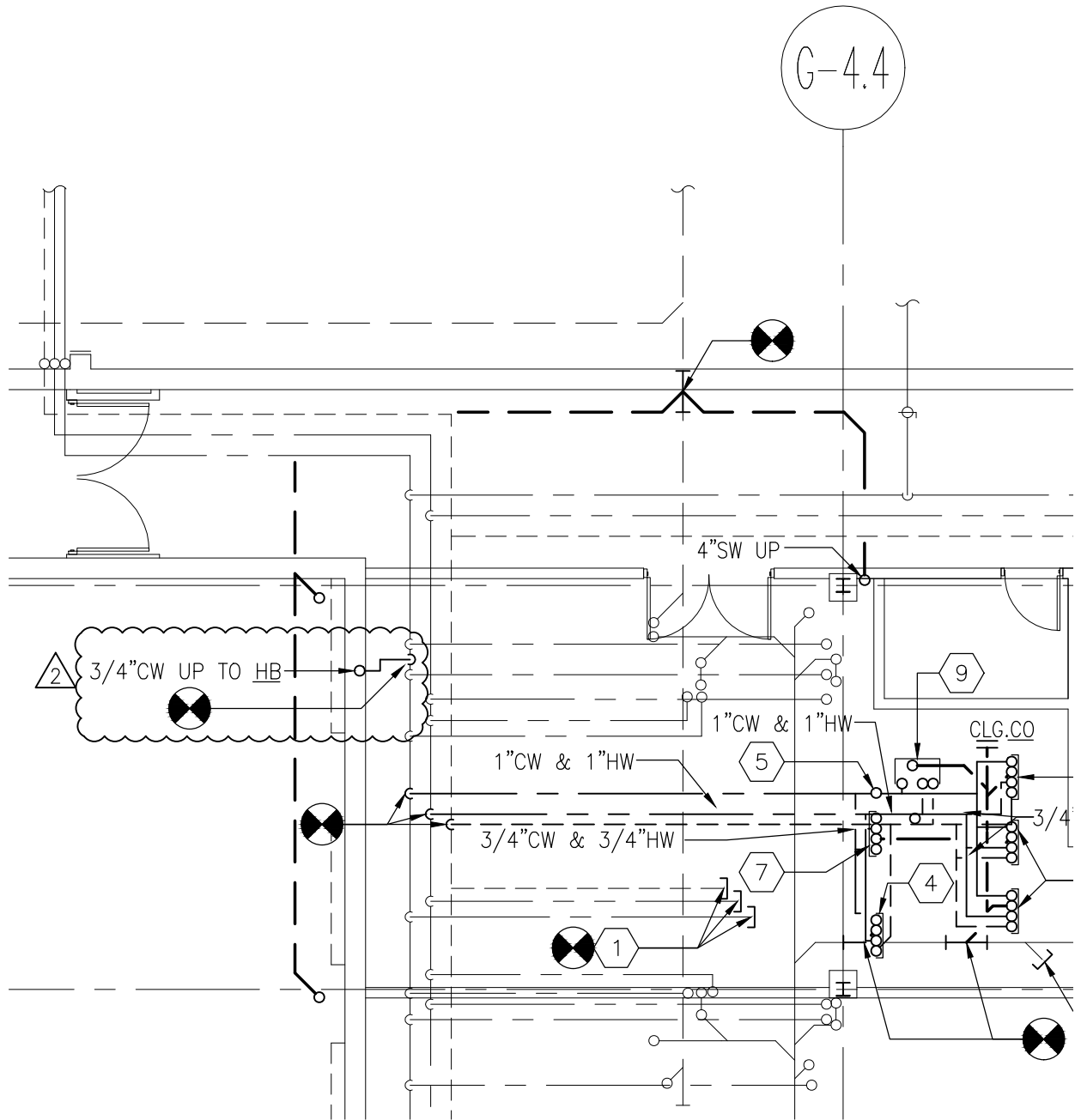
- A. After the systems have been installed and tested, insulation as specified below shall be applied. Materials shall be UL, Inc., approved and shall be applied as recommended by the manufacturer's written instructions. Materials used shall be the products of Owens Corning, PPG, Manville, Knauff Corporation, Certainteed, Armstrong, Eagle Picher, Insul Coustic or Benjamin Foster and shall be equal to those products that meet the Specifications below.
- B. Insulate new cold water piping, hot water piping, hot water circulating piping except chrome plated piping exposed at plumbing fixtures and insulate condensate drain lines. Insulation shall be heavy density long strand fiberglass, sectional insulation with all service vapor barrier jacket and double side adhesive self-sealing lap, Johns Manville Micro-Lok system or equal of Owens Corning. Insulation shall comply with ASTM E84 with a flame spread rating of 25 or less and smoke developed rating of 50 or less. Insulation thickness shall be in accordance with the Energy Code but shall not be less than ½ inch. Fittings, valve bodies, etc., shall be covered with Zeston type precut vinyl insulation jackets with pre-shaped fiberglass insert.
- C. On exposed insulated piping in finished areas within seven feet of the floors, provide .010 inch thick galvanized steel insulation jackets. This does not include piping exposed in unfinished areas such as boiler rooms, storage rooms, etc.
- D. At pipe hangers, for piping carrying fluids with temperatures below 70 degrees, provide a rigid core of insulation to support the pipe. Rigid insulation shall be the same thickness as the adjacent semi-rigid insulation and have the same flame spread and smoke developed ratings. Vapor barrier shall be continuous and integral between the rigid and semi-rigid sections of insulation. Rigid insulation shall be composed of hydrous calcium silicate.
- E. Rigid insulation shall be Johns Manville Thermo-12 Gold or equal of Owens Corning.

Gaudreau, Inc.
Baltimore, MD
Project No. 15046.00

Renovations to St. Martin's Home
Little Sisters of the Poor
Baltimore, MD

March 11, 2016

END OF SECTION 220500



PARTIAL BASEMENT WEST PLAN - MAIN STREET - PLUMBING

SCALE: 1/8" = 1'-0"



SCALE: 1/8" = 1'-0"

Gaudreau, Inc.
ARCHITECTS | PLANNERS

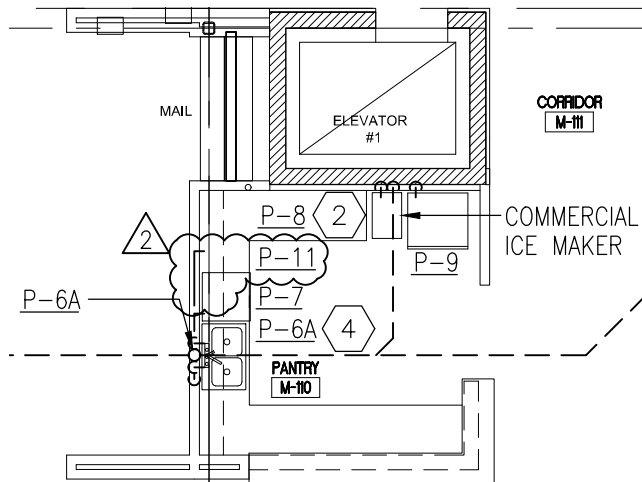
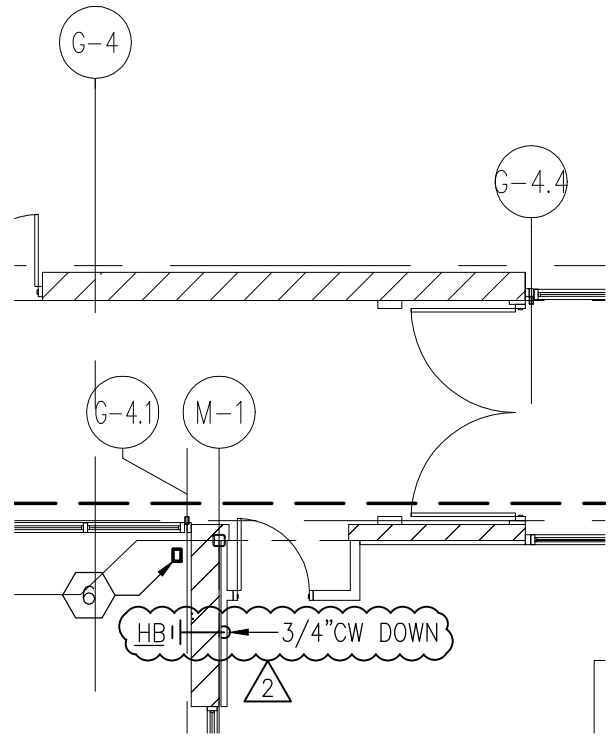
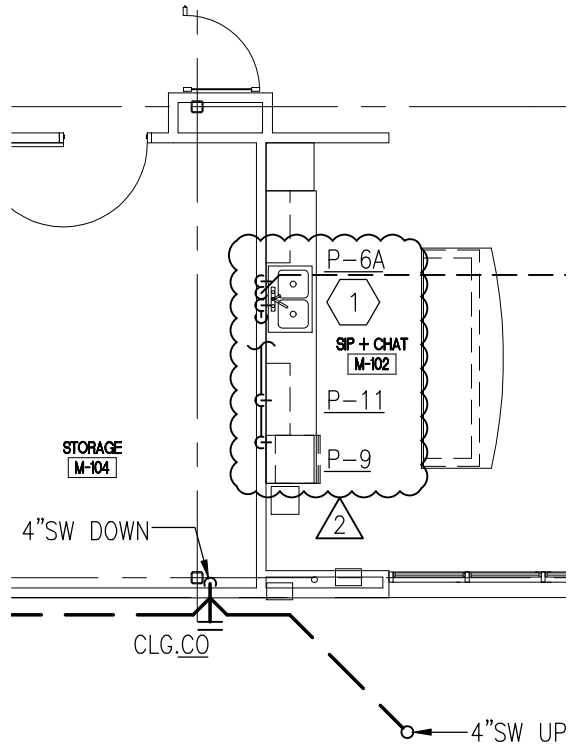
810 Light Street | Baltimore | Maryland 21230
 410 . 537 . 5040 | www.gaudreautinc.com

Consultant:
 JENNERIK ENGINEERING, INC.

PARTIAL BASEMENT WEST - PLUMBING

St. Martin's Home - Little Sisters of the Poor
 Main Street Renovations

PN: 15046.00	DATE: 03-30-16
Reference Dwg:	P-110
DWG. NO.	P-SK-110-01



PARTIAL 1ST FLR WEST FLR PLAN - MAIN STREET - PLUMBING

SCALE: 1/8" = 1'-0"

0 4' 8' 16'



SCALE: 1/8" = 1'-0"

Gaudreau, Inc.
ARCHITECTS | PLANNERS

810 Light Street | Baltimore | Maryland 21230
410 . 537 . 5040 | www.gaudreautinc.com

Consultant:
JENNERIK ENGINEERING, INC.

PARTIAL 1ST FLR WEST - PLUMBING

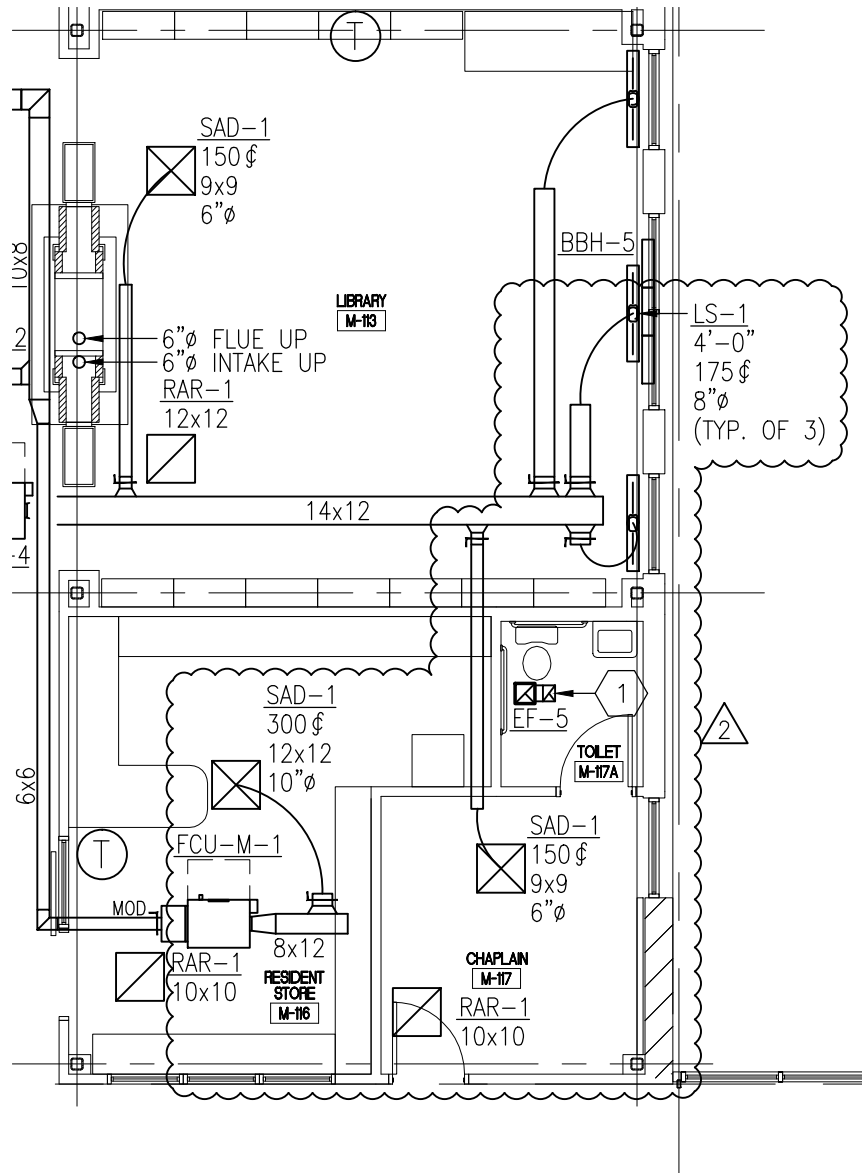
St. Martin's Home - Little Sisters of the Poor
Main Street Renovations

PN:
15046.00

DATE:
03-30-16

Reference Dwg: P-111

DWG. NO.
P-SK-111-01



PARTIAL 1ST FLR WEST FLR PLAN - MAIN STREET - DUCTWORK

SCALE: 1/8"=1'-0"



SCALE: 1/8" = 1'-0"

Gaudreau, Inc.
ARCHITECTS | PLANNERS

810 Light Street | Baltimore | Maryland 21230
410.537.5040 | www.gaudreadinc.com

Consultant:
JENNERIK ENGINEERING, INC.

PARTIAL 1ST FLR WEST - DUCTWORK

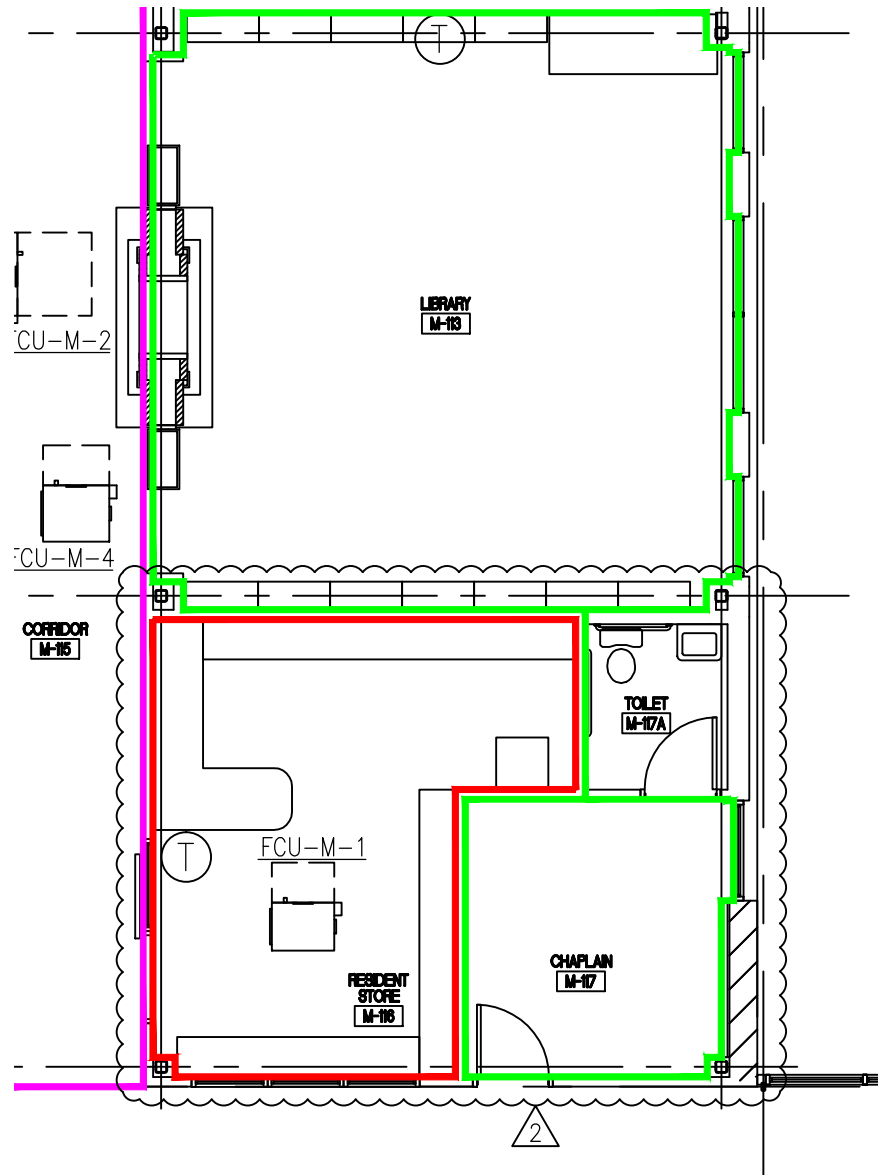
St. Martin's Home - Little Sisters of the Poor
Main Street Renovations

PN:
15046.00

DATE:
03-30-16

Reference Dwg: M-111

DWG. NO.
M-SK-111-01



PARTIAL 1ST FLR WEST FLR PLAN - MAIN STREET - ZONING

SCALE: 1/8" = 1'-0"

0 4' 8' 16'



SCALE: 1/8" = 1'-0"

Gaudreau, Inc.
ARCHITECTS | PLANNERS

810 Light Street | Baltimore | Maryland 21230
410.537.5040 | www.gaudreadinc.com

Consultant:
JENNERIK ENGINEERING, INC.

PARTIAL 1ST FLR WEST - ZONING PLAN

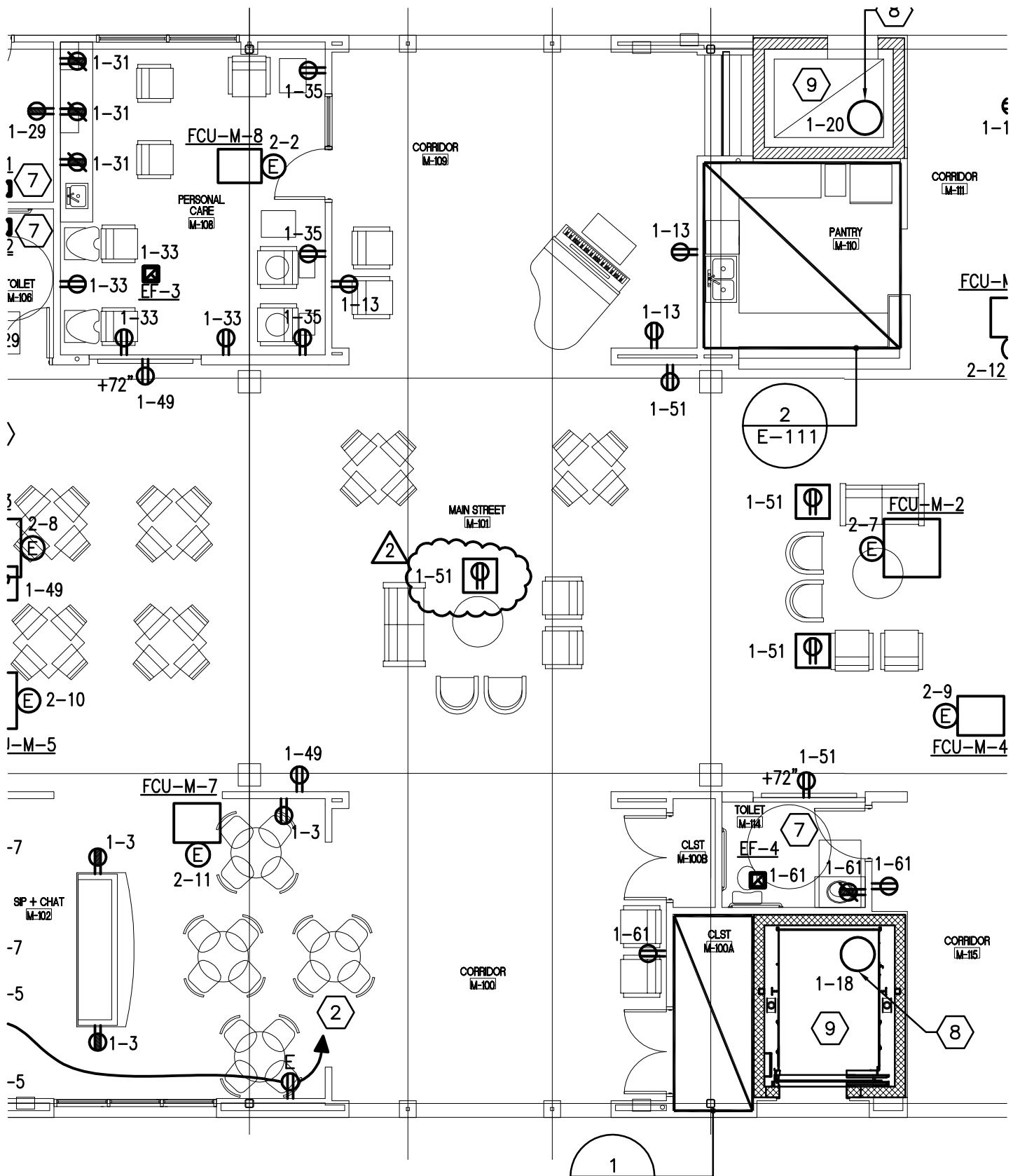
St. Martin's Home - Little Sisters of the Poor
Main Street Renovations

PN:
15046.00

DATE:
03-30-16

Reference Dwg: M-611

DWG. NO.
M-SK-611-01



FIRST FLOOR POWER PLAN

PN: 15031.00 DATE: 03-30-16

St. Martin's Home - Little Sisters of the Poor
Cottage C Renovations

Reference Dwg: E-111

Consultant:

DWG. NO. E-SK-111-01

F	6" LED DOWNLIGHT; OPEN ADJUSTIBLE, SLOPE CEILING FIXTURE; 3500K; 1500 LUMENS; 0-10V DIMMING DRIVER.	120	1	LED	21	RECESSED	HE WILLIAMS LDR60-L15/835-CS-DIM-120
G	ARCHITECTURAL WALL SCONCE	120	1	LED LF13	13	WALL	VISA MIDLANDS CRAFT/COLONNADE CB5186-LF13-BZ/CB3550-LNW900-BZA
H	ARCHITECTURAL PENDANT	120	4	2G11	108	CEILING	VISA MIDLANDS CRAFT CP4810-4F27-BZ
J	ARCHITECTURAL SQUARE SURFACE MOUNTED FIXTURE	120	2	QF36	52	CEILING	VISA MIDLANDS CRAFT CM1590-2QF26-BZ
K	ARCHITECTURAL ROUND SURFACE MOUNTED FIXTURE	120	2	QF36	52	CEILING	VISA CAPITOL CM1730-2QF26-BZ
L	ARCHITECTURAL PENDANT	120	4	F40	160	CEILING	VISA CYLINDER CP4344-4F39-BZ
M	BATHROOM VANITY FIXTURE	120	3	LED	81	WALL	JUSTICE DESIGN GROUP ALR-8593-30-DBRZ
N	ARCHITECTURAL PENDANT	120	1	12 VOLT HALOGEN	50	CEILING	TECH LIGHTING ARCHITECT
P	EXTERIOR WALL MOUNT LUMINAIRE	120	2	LED	42	WALL	EATON/MCGRAW EDISON OAK PARK PENDANT 700FJOAKBAS-12
	EXIT SIGN TO MATCH BUILDING STANDARD; LETTER COLOR PER LOCAL CODE.						

2

NOTES:

1. VERIFY FINISHES/COLORS WITH THE ARCHITECT.
2. VERIFY MOUNTING WITH ARCHITECTURAL DRAWINGS.

ELECTRICAL SCHEDULES

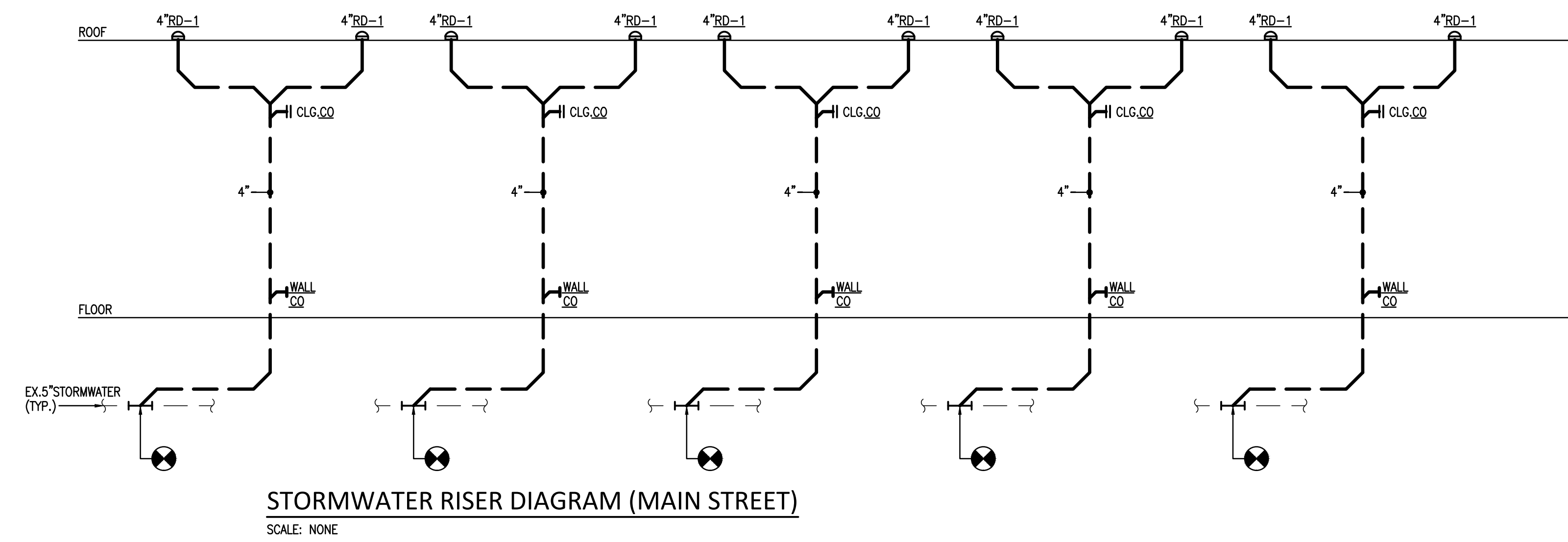
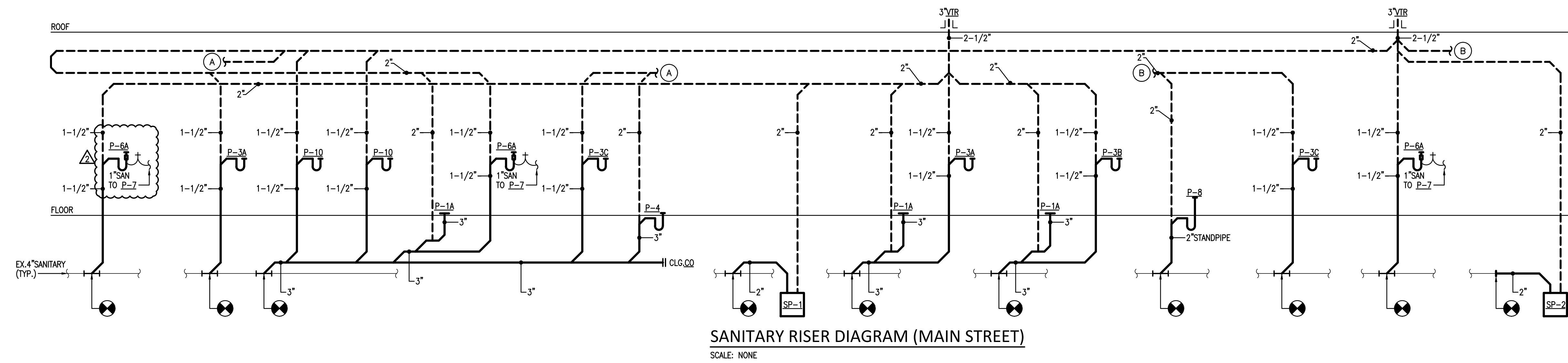
PN: 15031.00
DATE: 03-30-16

Reference Dwg: E-601

DWG. NO. E-SK-601-01

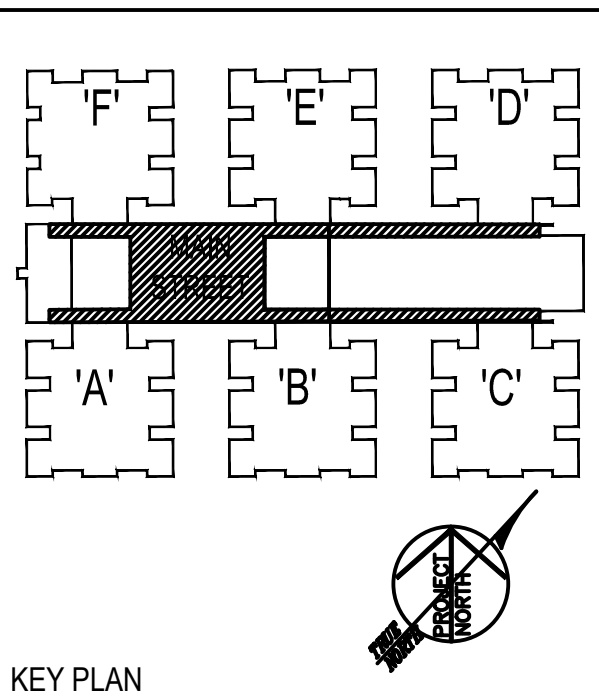
St. Martin's Home - Little Sisters of the Poor
Cottage C Renovations

Consultant:



Little Sisters of the Poor

601 Maiden Choice Lane
Baltimore, MD 21228



Gaudreau, Inc.
ARCHITECTS | PLANNERS
810 Light Street | Baltimore | Maryland 21201
410.837.9048 | www.gaudreauinc.com

Professional Certification: I certify that these documents were prepared or approved by me, and that I am a duly licensed architect under the laws of the State of Maryland.
License No: 9473 Expiration Date: 04/07/17

CONSTRUCTION DOCUMENTS

Number	Description	Date
2	Addendum #2	03.30.2016

Date: 03/04/16

Project Number: 15046.00

**PLUMBING
RISER DIAGRAMS
MAIN STREET**

P-610

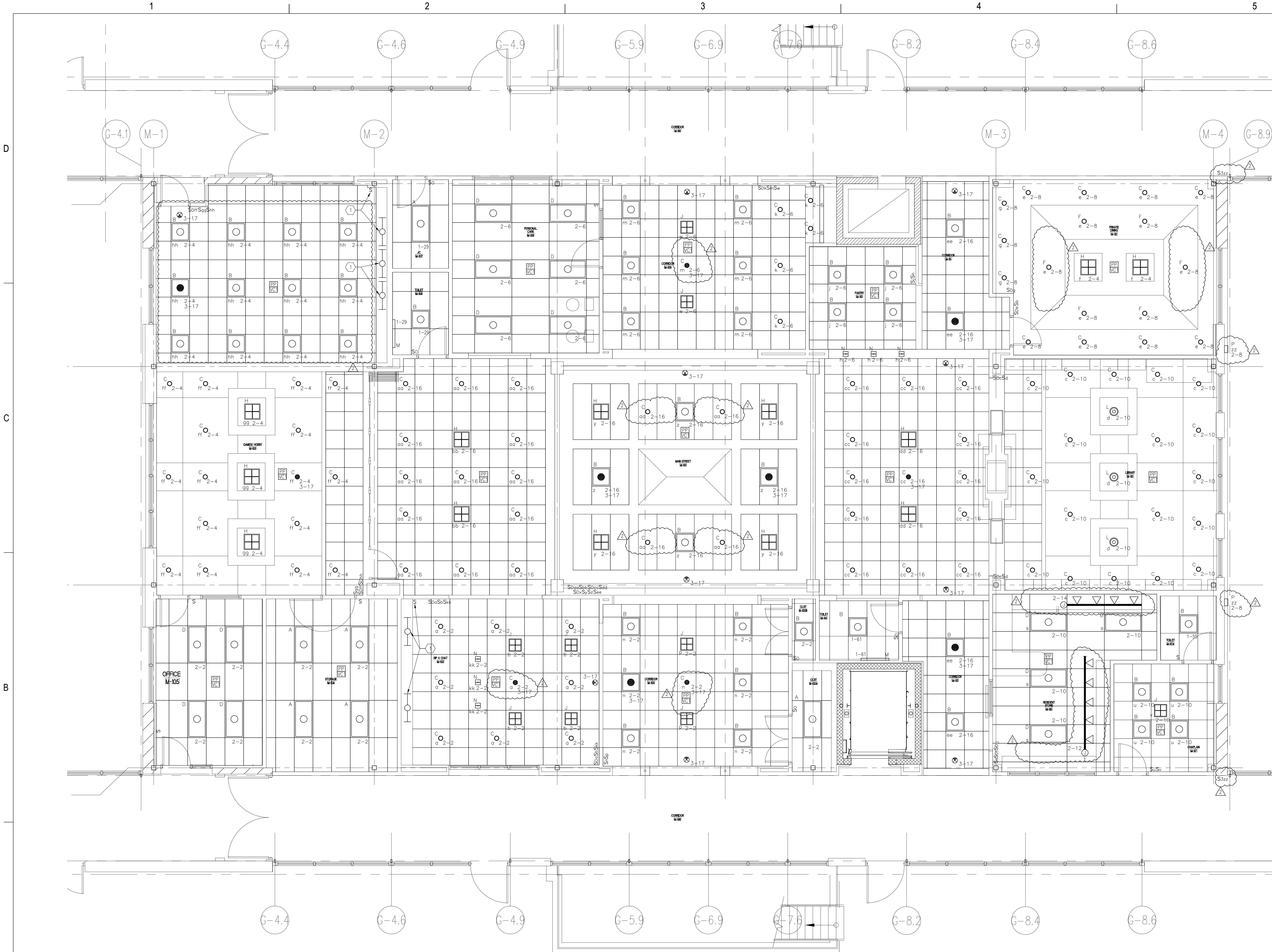
PLUMBING EQUIPMENT LIST

- SUMP PUMP No. 1 AND 2**
SP-1, SP-2
STANDARD MODEL NUMBER SE-50 WITH OIL-MINDER CONTROL
1/2 HP, 115V/18/60Hz, 3,600 RPM, 8 FLA
2" PIPE DISCHARGE, 50 GPM AT 20 FT. OF HEAD
PROVIDE THE SYSTEM WITH:
BASIN, COVER, VALVES, PIPING, GFI DUPLEX CONVENIENCE OUTLET

PLUMBING FIXTURE SCHEDULE										
DESIG.	DESCRIPTION	SAN	SW	VENT	CW	HW	MANUFACTURER & MODEL	TRIM AND ACCESSORIES	REMARKS	NOTES
P-1A	WATER CLOSET (TANK)	3"	-	2"	3/4"	-	AMERICAN STANDARD MODEL 2467.100 FINISH: WHITE	SEAT: AMERICAN STANDARD MODEL 5905.100; ELONGATED WITH COVER; FINISH: WHITE	16-1/2" HIGH FLOOR MOUNTED, ELONGATED ADA COMPLIANT 1.28 GALLONS PER FLUSH	1,3,4,5
P-3A	LAVATORY (COUNTERTOP)	1-1/2"	-	1-1/2"	1/2"	1/2"	AMERICAN STANDARD OVALYN MODEL 0496.221	FAUCET: DELTA 3538-R8MPU-DST MCQUIRE 155A, 8912-C P-TRAP MCQUIRE 165LK CONNECTION	FAUCET: 1.5 GPM	1,3
P-3B	LAVATORY (WALL HUNG)	1-1/2"	-	1-1/2"	1/2"	1/2"	AMERICAN STANDARD LUCERNE MODEL 0356.028	FAUCET: DELTA 3538-R8MPU-DST MCQUIRE 155WC, 8912-C P-TRAP MCQUIRE 165LK CONNECTION TRUEBRO 105E-Z	FAUCET: 1.5 GPM	1,3
P-3C	LAVATORY (COUNTERTOP)	1-1/2"	-	1-1/2"	1/2"	1/2"	BOWL: ELKAY MODEL DLR191910 10" DEEP BOWL WITH (1) FAUCET HOLE FINISH: STAINLESS STEEL	FAUCET: DELTA 3538-R8MPU-DST DUAL HANDLE, SINGLE HOLE, 5" GOOSENECK, FINISH: CHROME	FAUCET: 1.5 GPM	1,2
P-4	SERVICE SINK (FLOOR MOUNTED)	3"	-	2"	3/4"	3/4"	FIAT: MSB 2424	FIAT FAUCET: 830-AA; ALUMINUM BUMPER GUARD, HOSE & BRACKET, MOP HANGER	24"x24" MOLDED STONE SINK	1,3
P-6A	KITCHEN SINK (DOUBLE BOWL)	1-1/2"	-	1-1/2"	1/2"	1/2"	ELKAY: LR-2922 7-1/2" DEEP BOWL	FAUCET: DELTA MODEL 101-DST; 8" CENTERS FINISH: POLISHED CHROME GARBAGE DISPOSAL: INSINKERATOR BADGER 1 120V-1PH, 1/3HP	ADA COMPLIANT SINGLE LEVER, SWIVEL SPOUT, DECK MOUNTED. 2.2 GPM	1,3
P-6B	KITCHEN SINK (SINGLE BOWL)	1-1/2"	-	1-1/2"	1/2"	1/2"	ELKAY: LRAD-2222 6-1/2" DEEP BOWL WITH OFF CENTERED REAR DRAIN OPENING	FAUCET: DELTA MODEL 1977-RB-DST; 8" CENTERS	ADA COMPLIANT SINGLE LEVER, SWIVEL SPOUT, DECK MOUNTED. 2.2 GPM	1,3
P-7	DISHWASHER	1"	-	-	-	3/4"	PROVIDED UNDER ANOTHER DIVISION			1,2
P-8	COMMERCIAL ICE MAKER	-	-	-	1/2"	-	PROVIDED UNDER ANOTHER DIVISION	GUY GRAY BOX: BIM875	BACKFLOW PREVENTOR (ASSE 1035)	1,2
P-9	REFRIGERATOR ICE MAKER	-	-	-	1/2"	-	PROVIDED UNDER ANOTHER DIVISION	GUY GRAY BOX: BIM875	BACKFLOW PREVENTOR (ASSE 1035)	1,2
P-10	HAIR SALON SINK	1-1/2"	-	1-1/2"	1/2"	1/2"	PROVIDED UNDER ANOTHER DIVISION			1,2
P-11	COFFEE MAKER	-	-	-	1/2"	-	PROVIDED UNDER ANOTHER DIVISION	GUY GRAY BOX: BIM875		1,2

NOTES:

- COORDINATE LOCATION OF PLUMBING FIXTURES WITH ARCHITECTURAL DRAWINGS.
- PROVIDE FINAL PLUMBING CONNECTIONS TO EQUIPMENT PROVIDED UNDER ANOTHER DIVISION.
- COORDINATE PLUMBING FIXTURE FINISH WITH ARCHITECTURAL DRAWINGS.
- COORDINATE WITH WALL THICKNESS.
- CONTRACTOR SHALL COORDINATE LEFT OR RIGHT SIDE TRIP WITH ARCHITECTURAL DRAWINGS.



FIRST FLOOR PLAN - LIGHTING
SCALE: 1/4" = 1'-0"

SPECIFIC NOTES (REFER TO E-211 WHERE INDICATED):

- ① UNDERCABINET LIGHT FIXTURES, HE WILLIAMS - 25F-36-1-21T5S-A1215-E81-120, PROVIDE LOCAL 120V WALL SWITCH IN ADJACENT LOCATION SHOWN. CONNECT TO GFCI CIRCUIT AT COUNTER.

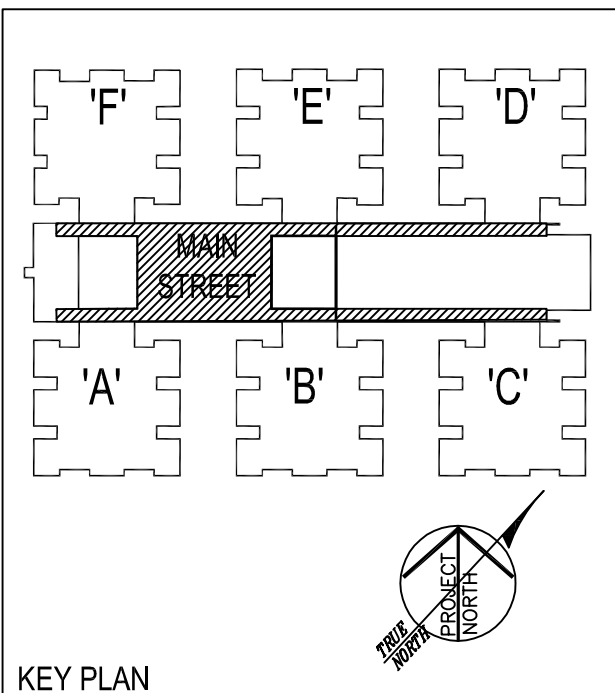
DRAWING NOTES (REFER TO E-201 AS INDICATED):

- CONNECT ALL EXIT SIGNS AHEAD OF LOCAL SWITCHING, AND TO CIRCUIT 3-17.
- ALL FIXTURES WITH A HATCHED CENTER, [Symbol], SHALL BE PROVIDED WITH A UL924 RELAY.



Little Sisters of the Poor

601 Maiden Choice Lane
Baltimore, MD 21228



Gaudreau, Inc.
ARCHITECTS | PLANNERS

810 Light Street | Baltimore | Maryland 21201
410-837-5048 | www.gaudreauinc.com

Professional Certification: I certify that these documents were prepared or approved by me, and that I am a duly licensed architect under the laws of the State of Maryland.
License No: 9473 Expiration Date: 04/07/17

CONSTRUCTION DOCUMENTS

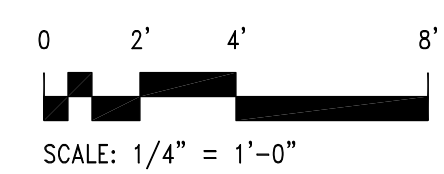
Number	Description	Date
2	ADDENDUM #2	3.30.2016

Date: 03/04/16

Project Number: 15046.00

FIRST FLOOR
LIGHTING PLAN

E-211

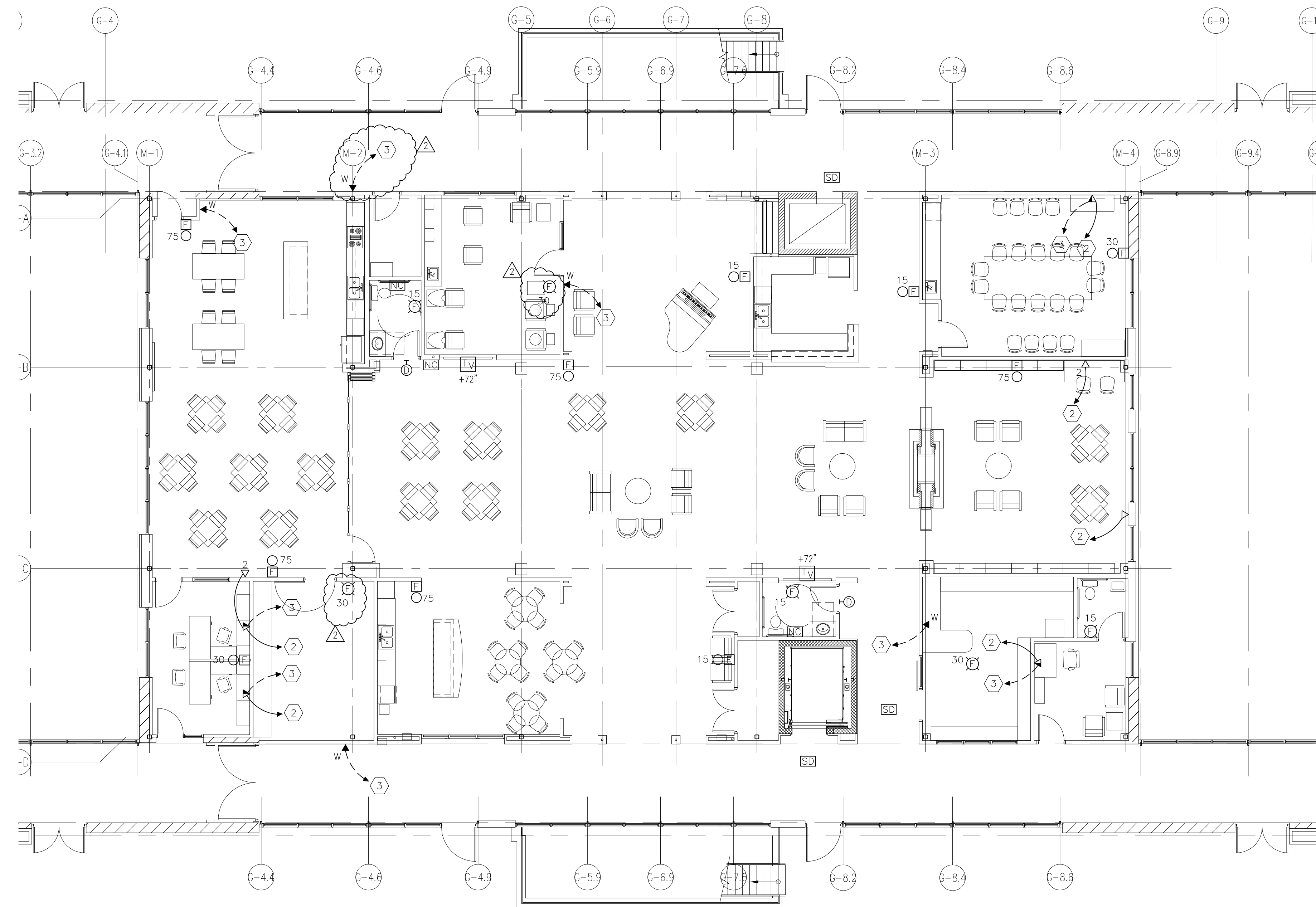


DRAWING NOTES (REFER TO E-311 AS INDICATED):

1. ALL WIRING SHALL BE LABELED ON BOTH THE SOURCE END AND THE TERMINATION END - THIS INCLUDES THE FEEDS FROM THE PATCH PANEL TO THE MAIN HUB ROOM.
2. LINE TYPE INDICATES DATA WIRING/HOME-RUN. WIRE TYPE SHALL MATCH BUILDING STANDARD.
3. LINE TYPE INDICATES TELEPHONE WIRING/HOME-RUN. WIRE TYPE SHALL MATCH BUILDING STANDARD.
4. WAF SYMBOL INDICATES WIRELESS ACCESS POINT. CONFIRM EXACT LOCATIONS WITH MANUFACTURER'S RECOMMENDED PLACEMENT. DESIGN BASED AROUND SOPHOS AP 100C. PROVIDE A 1P/20A/120V CIRCUIT IN PANEL LRPM5L TO SERVE ALL OF THE ACCESS POINTS. PROVIDE 2#12, #12GRD, IN 3/4" CON.
5. FIRE ALARM DEVICES ARE SHOWN FOR REFERENCE ONLY. CONTRACTOR SHALL CONTRACT THE SERVICES OF ALARM TECH SOLUTIONS, LLC (301-912-1775) TO EVALUATE THE EXISTING BUILDING SYSTEM, DESIGN NEW DEVICE LAYOUT TO ACCOMMODATE SCOPE OF WORK, PREPARE PERMIT AND SHOP DRAWINGS FOR A FULLY FUNCTIONAL AND CODE COMPLIANT FIRE ALARM SYSTEM. THE PERSON(S) CONTRACTED TO COMPLETE SAID DESIGN SHALL MEET THE FOLLOWING REQUIREMENTS: TRAINED AND CERTIFIED BY THE MANUFACTURER USED IN THE FIRE-ALARM SYSTEM DESIGN; NICET CERTIFIED FIRE ALARM TECHNICIAN, LEVEL III MINIMUM; LICENSED OR CERTIFIED BY AUTHORITIES HAVING JURISDICTION. CONTRACTOR SHALL ASSUME ALL RESPONSIBILITY OF CONTRACTING SAID SERVICES, AND THE ENGINEER WILL REVIEW THE FULL SHOP DRAWINGS ONCE PREPARED.
6. FIRE ALARM ANNUNCIATING DEVICES SHALL BE CEILING MOUNTED TO MATCH THE BUILDING STANDARD.

SPECIFIC NOTES (REFER TO E-311 WHERE INDICATED):

- 1 SERVER RACK AND PATCH PANEL - MANUFACTURER AND MODEL SHALL MATCH THOSE USED IN REST OF FACILITY.
- 2 PROVIDE DATA HOME-RUN BACK TO PATCH PANEL IN TEL/DATA ROOM C-295.
- 3 PROVIDE TELEPHONE HOME-RUN BACK TO BOARD IN TEL/DATA ROOM C-295. TELEPHONE JACKS MAY BE DAISY CHAINED IF MULTIPLE JACKS ARE LOCATED WITHIN THE SAME ROOM.

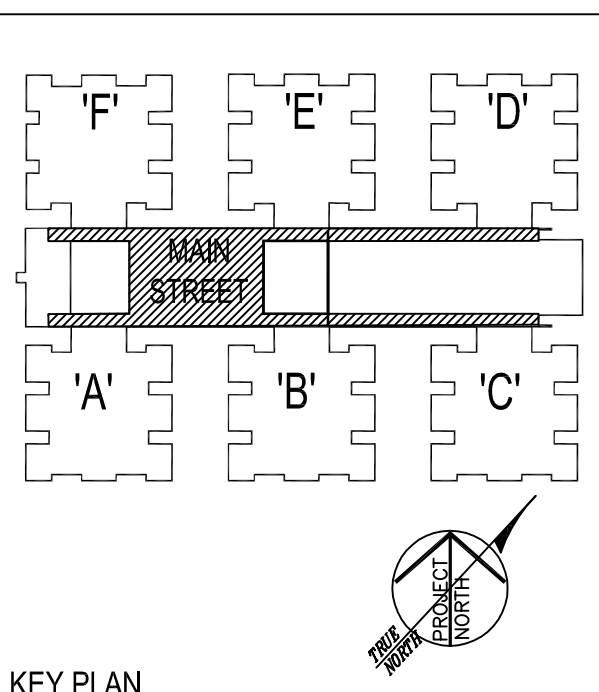


FIRST FLOOR PLAN - SPECIAL SYSTEMS
SCALE: 1/8" = 1'-0"



Little Sisters of the Poor

601 Maiden Choice Lane
Baltimore, MD 21228



KEY PLAN

Gaudreau, Inc.
ARCHITECTS | PLANNERS

810 Light Street | Baltimore | Maryland 21201
410-837-0048 | www.gaudreauinc.com

Professional Certification: I certify that these documents were prepared or approved by me, and that I am a duly licensed architect under the laws of the State of Maryland.
License No: 9473 Expiration Date: 04/07/17

CONSTRUCTION DOCUMENTS

Number	Description	Date
2	ADDENDUM #2	3.30.2016

Date: 03/04/16

Project Number: 15046.00

**FIRST FLOOR
SPECIAL SYSTEMS
PLAN**

E-311

