



KEVIN KAMENETZ
County Executive

EDWARD C. ADAMS, JR., Director
Department of Public Works

September 8, 2015

RE: Contract #15025 PO0
(Silver) Leeds Certified Green Building – Eastern Family Resource Center
9150 Franklin Square Drive, Baltimore, Maryland 21237
Rosedale – District 14 c 6
Job Order No. 249-218-0100-0614

ADDENDUM NO. 10

To All Bidders

This addendum is hereby made a part of the Proposal and the Special Provisions, and is hereby incorporated into the Contract. Should this addendum conflict with any portion of the Special Provisions, the Proposal, or any prior addenda, this addendum shall supersede and control.

Please note the attached changes, corrections, and/or information in connection with the contract and submit bids and be otherwise governed accordingly.

A handwritten signature in blue ink that reads "Vincent G. Kicas".

Vincent G. Kicas, Chief
Division of Construction Contracts Administration

VGK:KM:AEC:bjw

Attachments - 3

Please acknowledge this Emailed Addendum by signing below and faxing back to Tony Crews at 410-887-4505. "Failure by a Bidder to acknowledge receipt of this Addendum to the County may result in the Bidder's bid being considered non-responsive and rejected."

RECEIVED BY: _____ DATE: _____

NAME ABOVE PRINTED: _____

COMPANY NAME PRINTED: _____

ADDENDUM 10

This Addendum forms a part of the Contract Documents and modifies the original Bidding Documents as noted below. Acknowledge receipt of this Addendum in the space provided on the Bid Form. Failure to acknowledge addendum may disqualify Bidder.

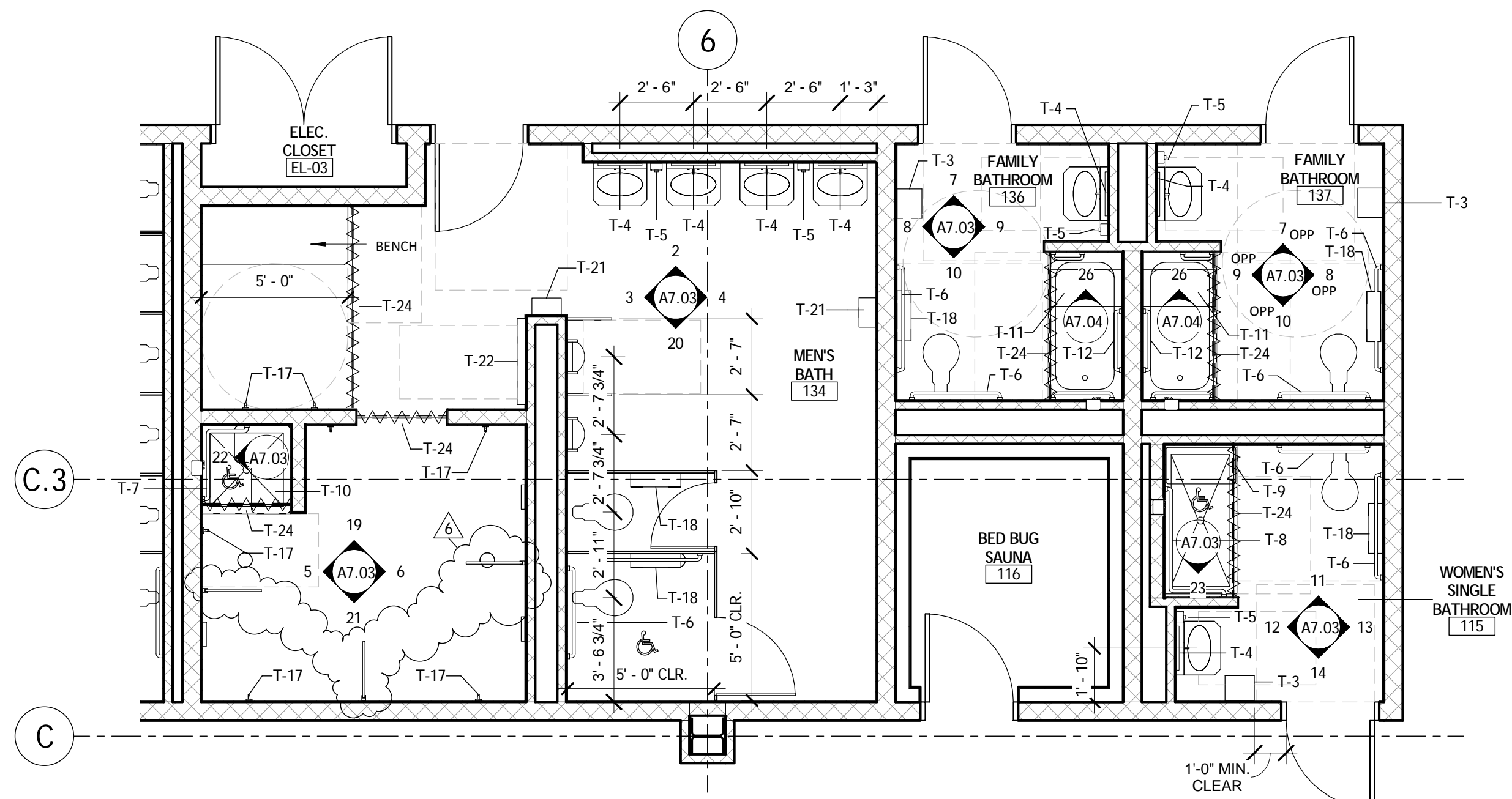
CHANGES TO DRAWINGS

DELETE: Existing Drawings with the respective numbers listed below.
ADD: New Drawings, which are reissued entirely, with revisions dated 09.04.2015.

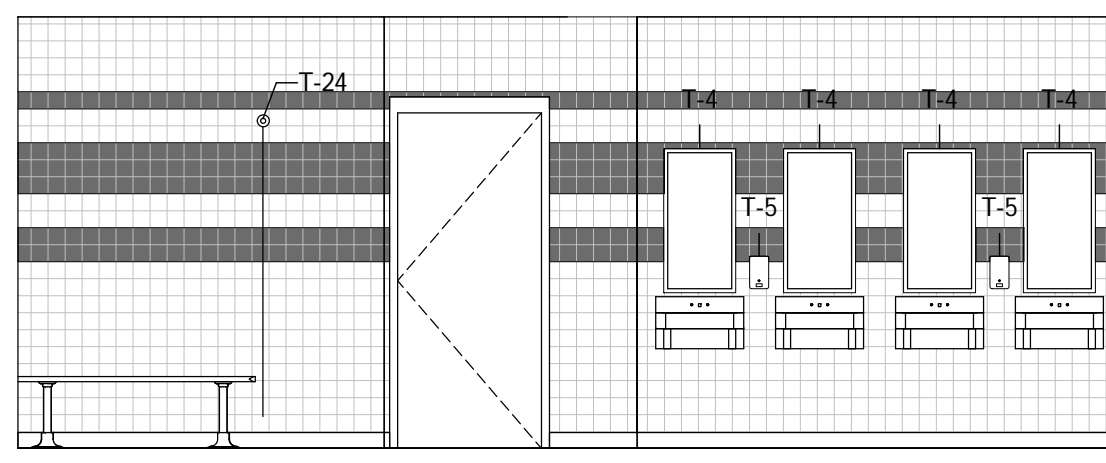
Access these drawings here: <https://www.dropbox.com//kUJrwym1kIOc1sb7hIr0on>

Drawing No.

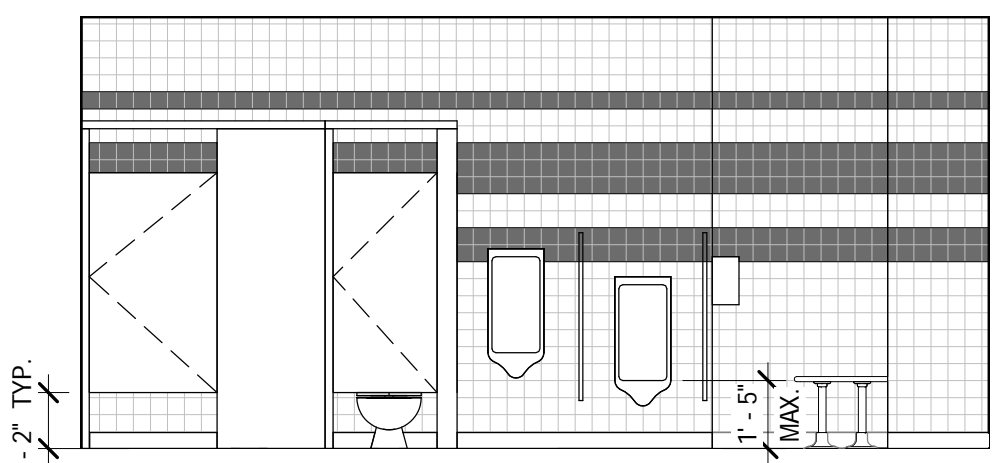
A7.03 TOILET PLANS & ELEVATIONS – LEVEL 1
A7.05 TOILET PLANS & ELEVATIONS – LEVEL 2



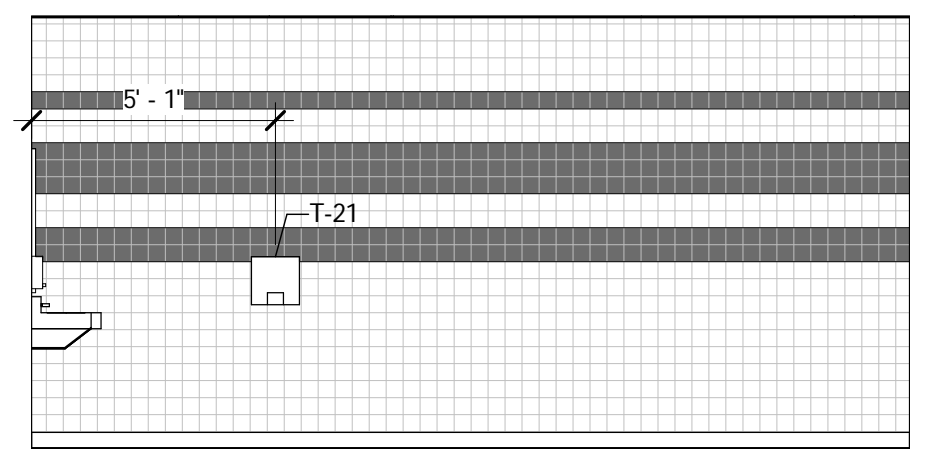
1 ENLARGED PLAN - MEN'S BATH/INDIVID. BATHS - LEVEL 1 FLOOR PLAN
A6.14 A7.03 1/4" = 1'-0"



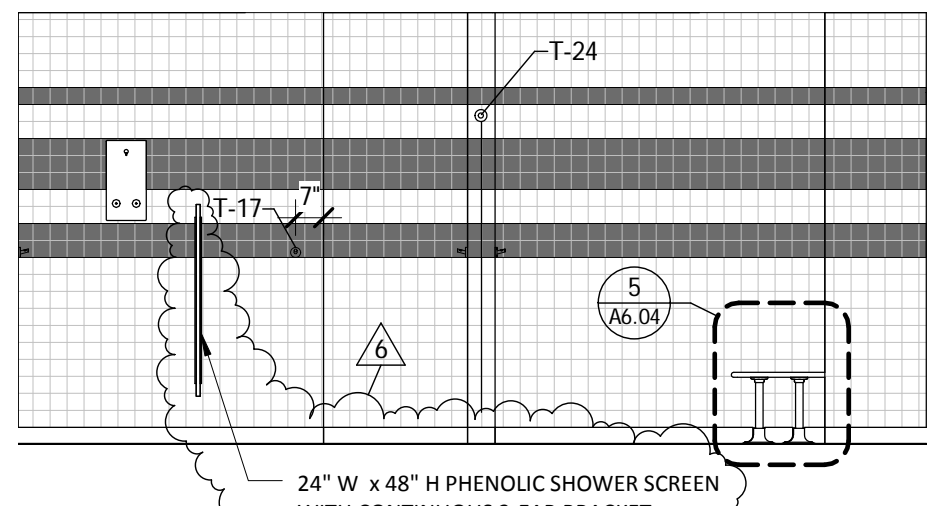
2 MEN'S BATH 134 - ELEV. A
A6.13 A7.03 1/4" = 1'-0"



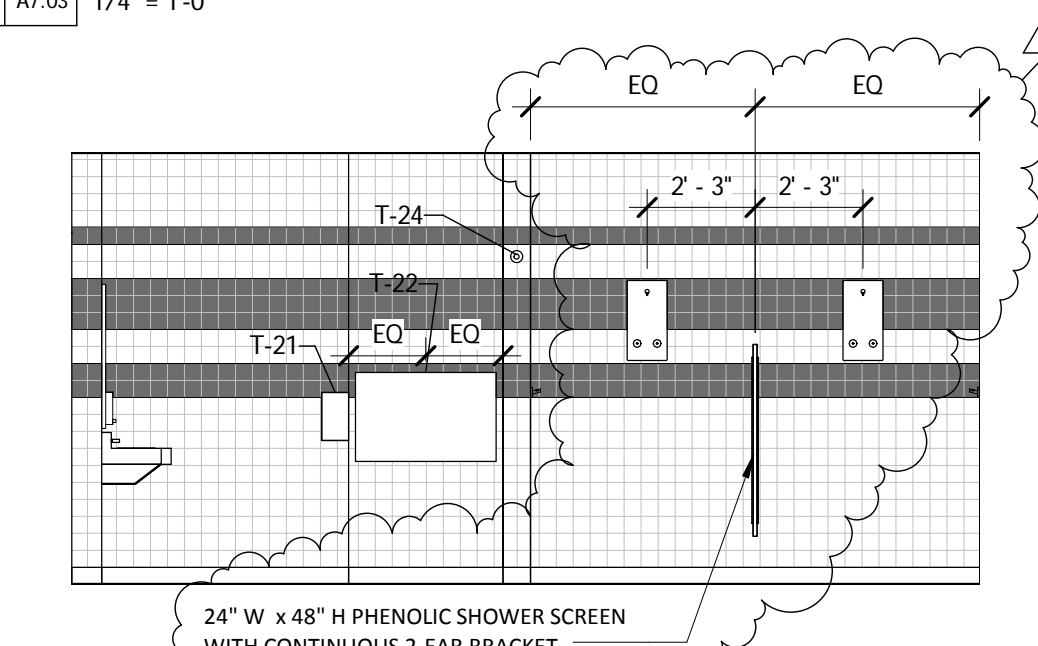
3 MEN'S BATH 134 - ELEV. B
A7.03 A7.03 1/4" = 1'-0"



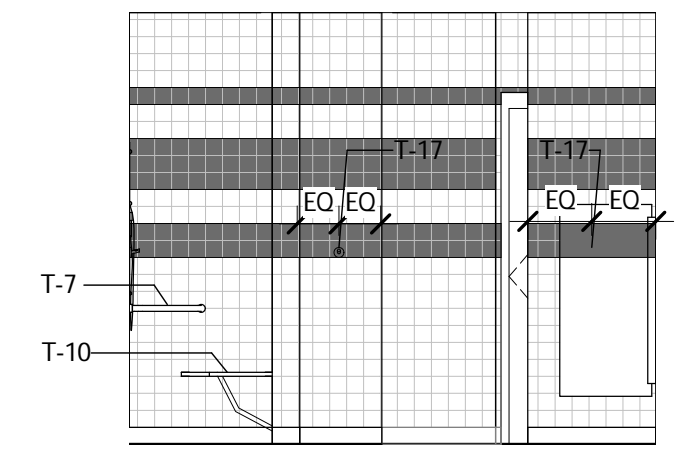
4 MEN'S BATH 134 - ELEV. C
A7.03 A7.03 1/4" = 1'-0"



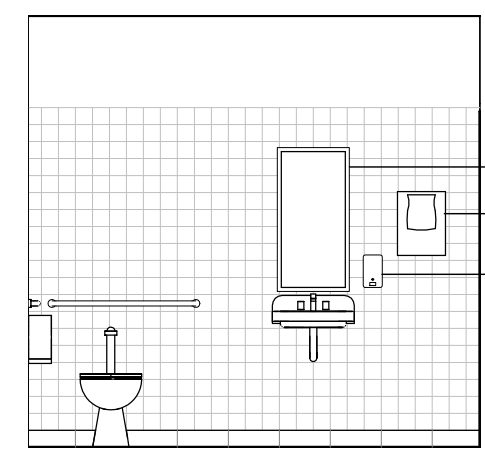
5 MEN'S BATH 134 - ELEV. B1
A7.03 A7.03 1/4" = 1'-0"



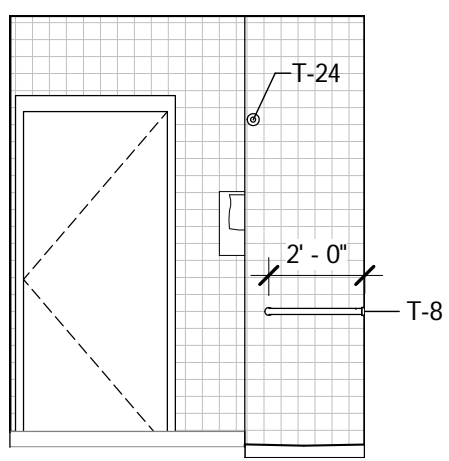
6 MEN'S BATH 134 - ELEV. C1
A7.03 A7.03 1/4" = 1'-0"



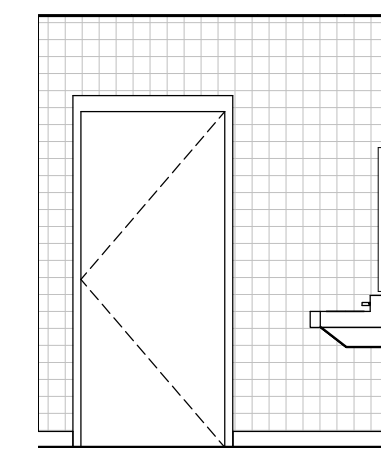
19 MEN'S BATH 134 - ELEV. A1
A6.13 A7.03 1/4" = 1'-0"



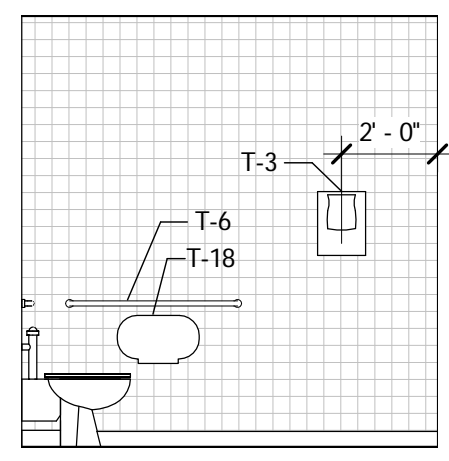
16 STAFF TOILETS - ADMIN - ELEV. A
A7.03 A7.03 1/4" = 1'-0"



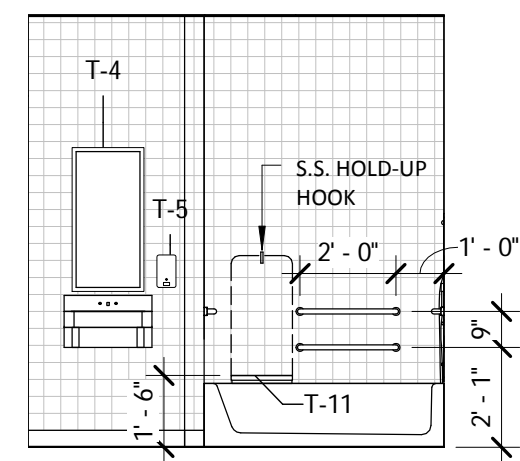
23 WOMEN'S SINGLE BATHROOM - ELEV. D1
A7.03 A7.03 1/4" = 1'-0"



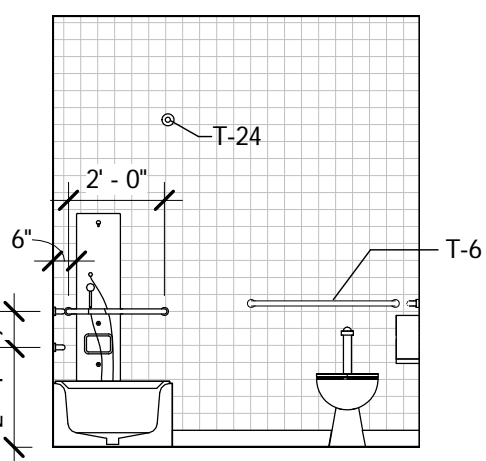
7 FAMILY BATHROOM - ELEV. A
A7.03 A7.03 1/4" = 1'-0"



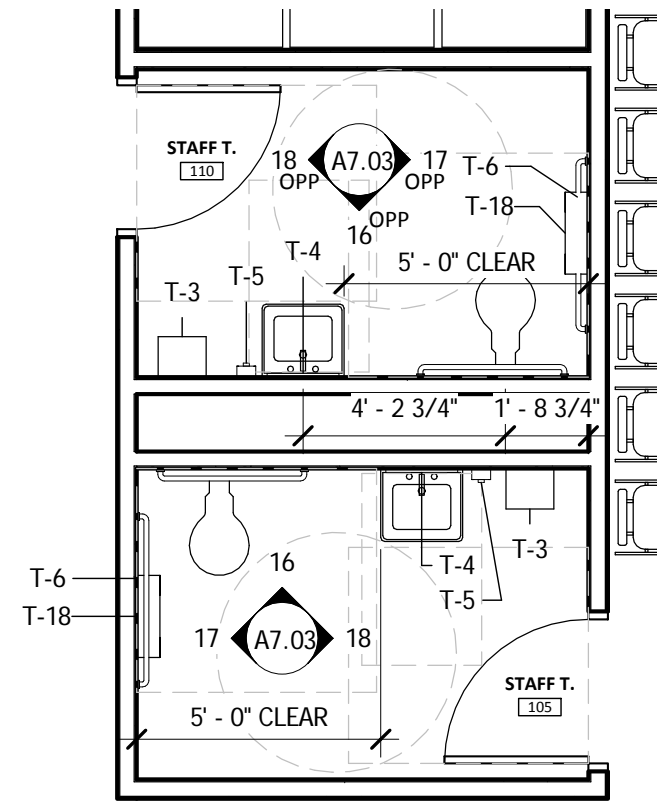
8 FAMILY BATHROOM - ELEV. B
A7.03 A7.03 1/4" = 1'-0"



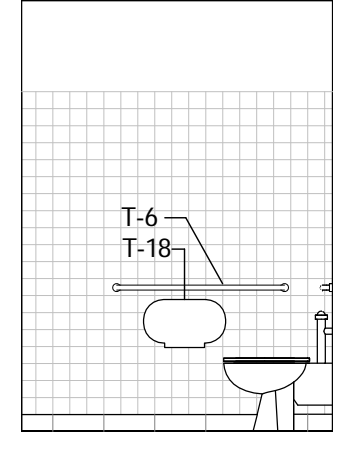
9 FAMILY BATHROOM - ELEV. C
A7.03 A7.03 1/4" = 1'-0"



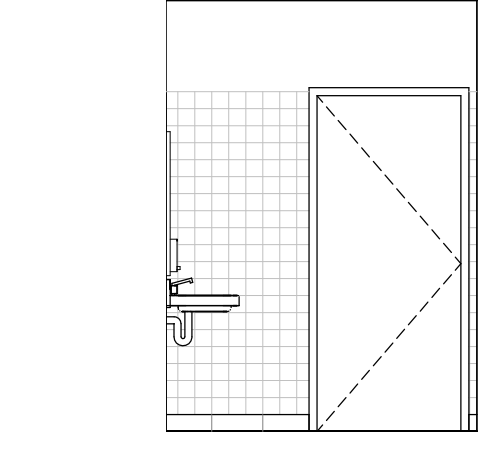
10 FAMILY BATHROOM - ELEV. D
A7.03 A7.03 1/4" = 1'-0"



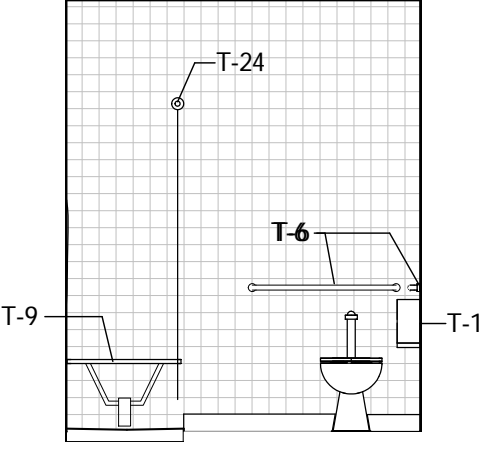
15 ENLARGED PLAN - STAFF TOILETS - ADMIN - LEVEL 1
A2.11A A7.03 1/4" = 1'-0"



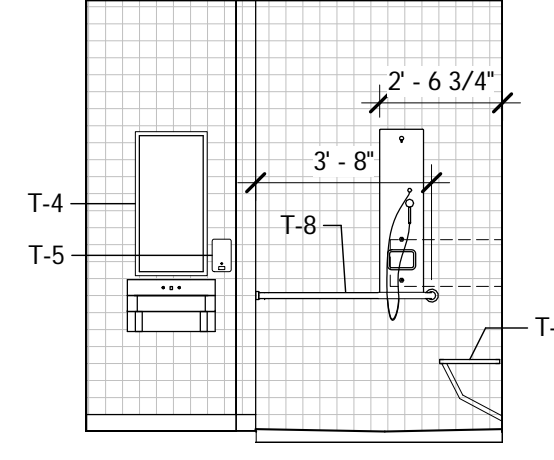
17 STAFF TOILETS - ADMIN - ELEV. B
A7.03 A7.03 1/4" = 1'-0"



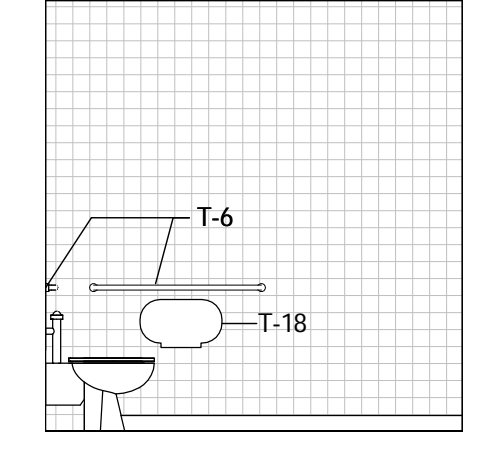
18 STAFF TOILETS - ADMIN - ELEV. C
A7.03 A7.03 1/4" = 1'-0"



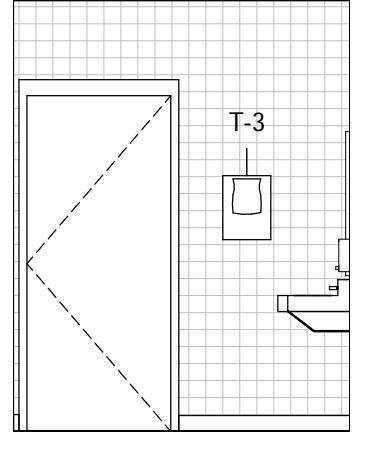
11 WOMEN'S SINGLE BATHROOM - ELEV. A
A7.03 A7.03 1/4" = 1'-0"



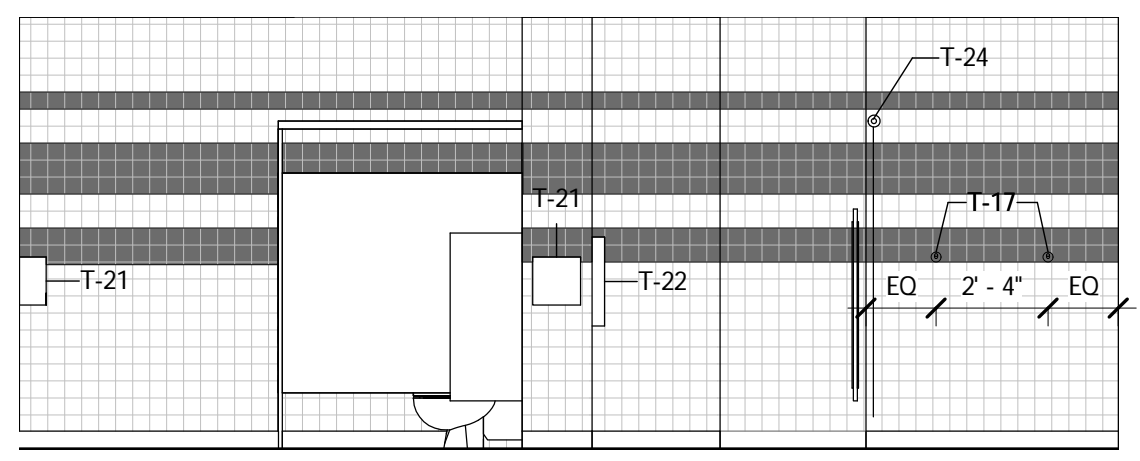
12 WOMEN'S SINGLE BATHROOM - ELEV. B
A7.03 A7.03 1/4" = 1'-0"



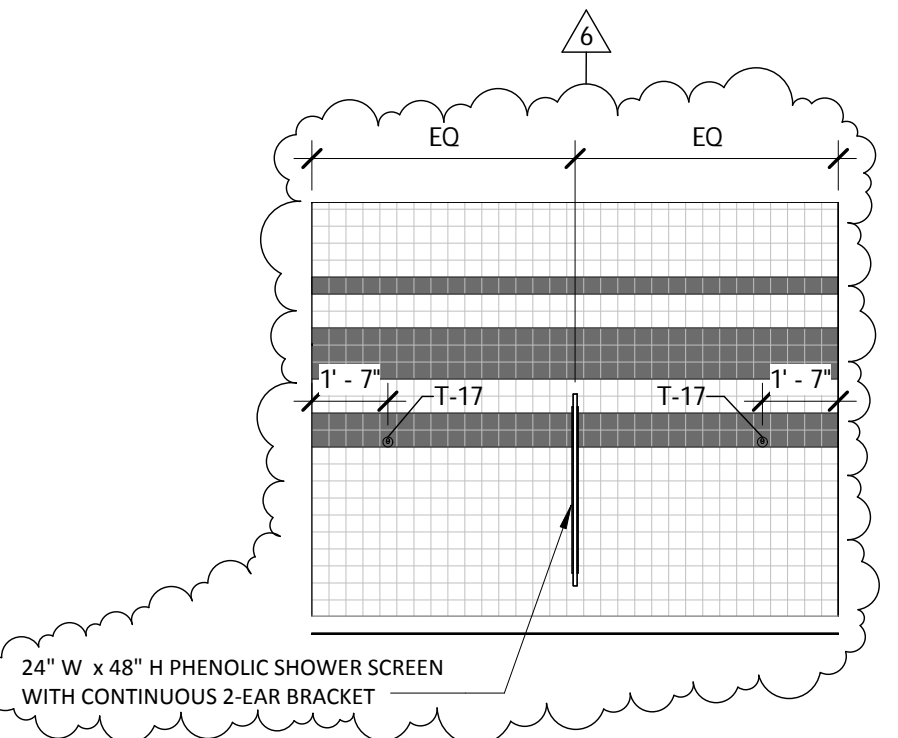
13 WOMEN'S SINGLE BATHROOM - ELEV. C
A7.03 A7.03 1/4" = 1'-0"



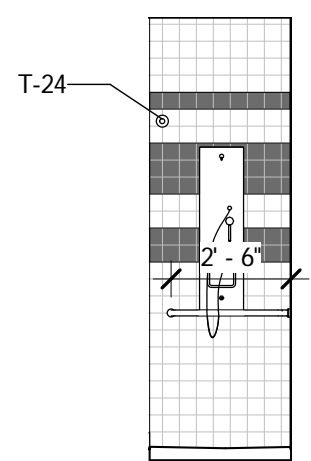
14 WOMEN'S SINGLE BATHROOM - ELEV. D
A7.03 A7.03 1/4" = 1'-0"



20 MEN'S BATH 134 - ELEV. D
A6.13 A7.03 1/4" = 1'-0"



21 MEN'S BATH 134 - ELEV. D1
A6.13 A7.03 1/4" = 1'-0"



22 MEN'S BATH 134 - ELEV. B2
A7.03 A7.03 1/4" = 1'-0"

TOILET ACCESSORIES SCHEDULE			
Type Mark	Description	Manufacturer	Model No.
T-3	Paper Towel Dispenser	Von Drehle	VD8880
T-4	Framed Wall Mirror, 18" W x 36" H		
T-5	Soap Dispenser - 800ml carton refill	Gojo	#Goj9034
T-6	Grab Bar Set	Bobrick	B-5806 Series
T-7	Two-Wall Shower Grab Bar, Transfer-type Shower	Bobrick	B-6861 Series
T-8	Two-Wall Shower Grab Bar, Roll-In-type Shower	Bobrick	B-6861 Series
T-9	Foldable Shower Seat, Rectangular	Bradley Corporation	9562
T-10	Foldable Shower Seat, L-Shaped	Bradley Corporation	9569
T-11	Fold-Up Bathtub Seat	American Specialties	8358
T-12	Bathtub Grab Bar Set	Bobrick	B-6861 Series
T-17	Robe Hook	Bobrick	B-7671
T-18	Twin Jumbo Bath Tissue Roll Dispenser	SCA Tork	56TR
T-21	Hand dryer	Xlerator	Original with Optional ADA-Compliant Recess Kit
T-22	Baby Changing Station	Koala Bear Care	KB200
T-23	Grab Bar Set - Ambulatory	Bobrick	B-5806 Series
T-24	Heavy-Duty Shower Curtain Rod	Bobrick	B-6107 Series
T-25	Specimen Pass-Thru Cabinet	Bradley Corporation	9813

GENERAL NOTES:
1. REFER TO A0.0 FOR TYPICAL MOUNTING HEIGHTS AND REQUIREMENTS FOR TOILET ROOM FIXTURES AND ACCESSORIES.
2. REFER TO A5.25 FOR SHOWER PAN DETAILS.

SEAL	PROFESSIONAL CERTIFICATION	AS-BUILT / REVISION	DATE	P.W.A. NO.	KEY SHEET	POSITION SHIT	DRAWING SCALE
	I HEREBY CERTIFY THAT THESE DOCUMENTS WERE PREPARED OR APPROVED BY ME, AND THAT I AM A DULY LICENSED PROFESSIONAL ARCHITECT UNDER THE LAWS OF THE STATE OF MARYLAND. LICENSE NO. 23773 EXPIRATION DATE 11/24/16 ARCHITECT: LAURIE M. MCCLAIN, AIA						PLAN SCALE: 1/4" = 1'-0" PROFILE SCALE:
	DESIGN BY: Designer DWG BY: Author CHKD BY: Checker	REVIEWED BY:			HIGHWAYS STRUCTURES STORM DRAINS SEWER		APPROVED BY: _____ DIRECTOR DATE: _____ APPROVED BY: _____ CHIEF DATE: _____

BALTIMORE COUNTY OFFICE OF BUDGET AND FINANCE, PROPERTY MANAGEMENT
Eastern Family Resource Center
TOILET PLANS & ELEVATIONS - LEVEL 1
9150 Franklin Square Drive, Rosedale, MD 21237

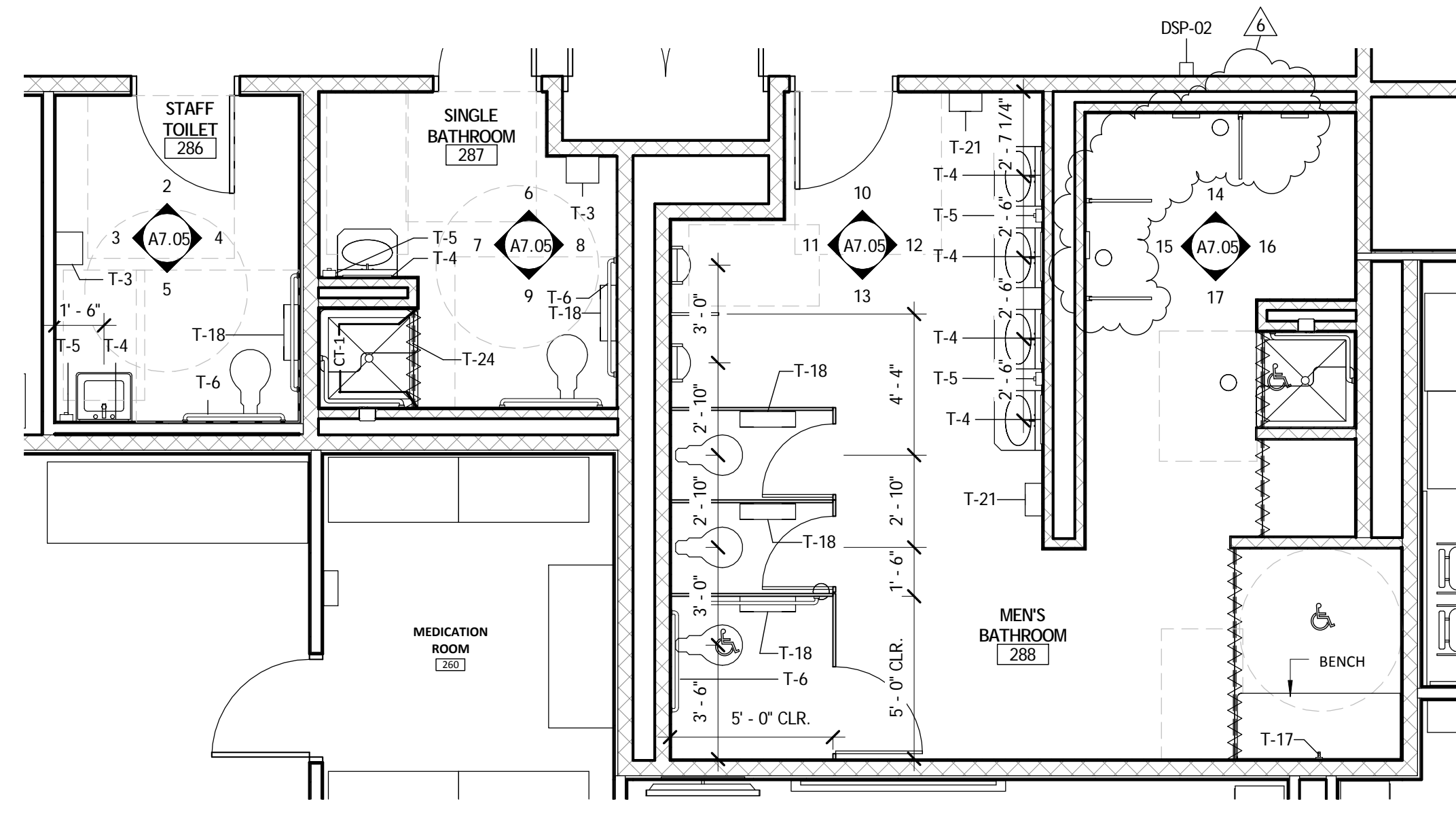
SHEET DESIGNATION	CONTRACT NO.
A7.03	15025P00
	JOB ORDER NO.
	249-218-0100-0614
	SHEET OF
	DRAWING NO.
	FILE NO.



BID SET 06/16/15

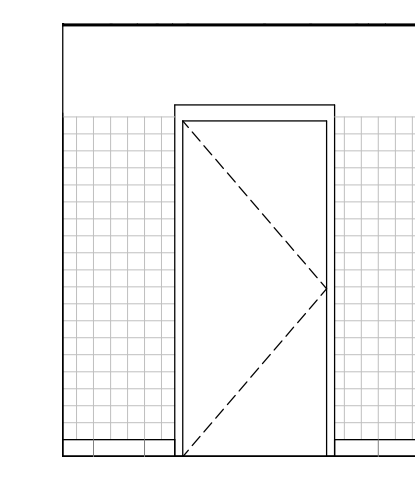
SUBDIVISION:

ELECT. DISTRICT NO. 14C6

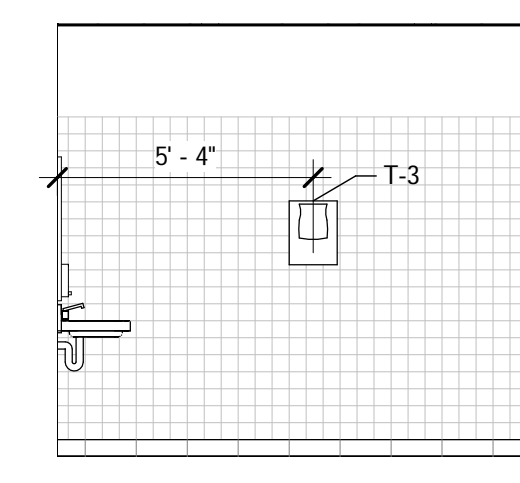


1 ENLARGED PLAN - STAFF TOILET 286, SINGLE BATHROOM 287, MEN'S BATHROOM 288
 A6.21 A7.05 1/4" = 1'-0"

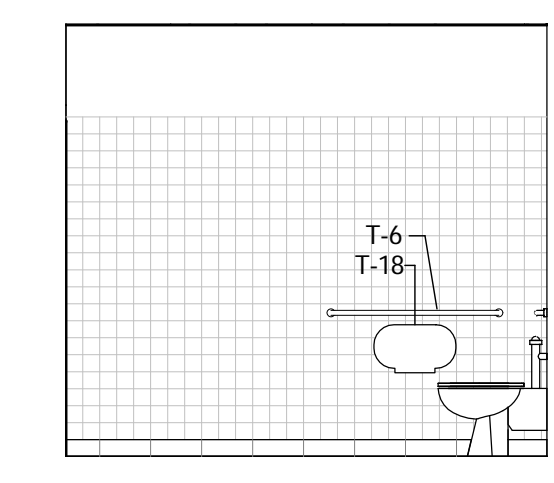
2 STAFF TOILET 286 - ELEV. A
 A7.05 A7.05 1/4" = 1'-0"



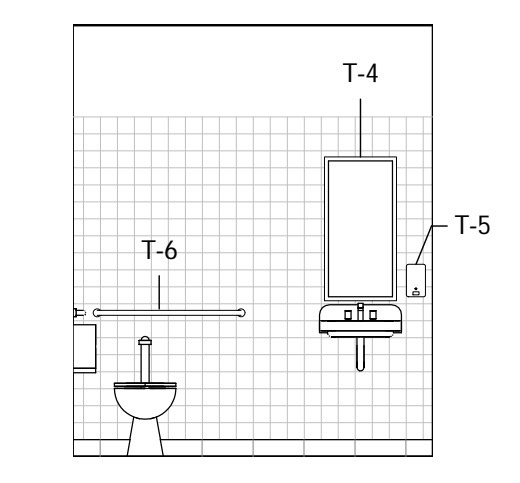
3 STAFF TOILET 286 - ELEV. B
 A7.05 A7.05 1/4" = 1'-0"



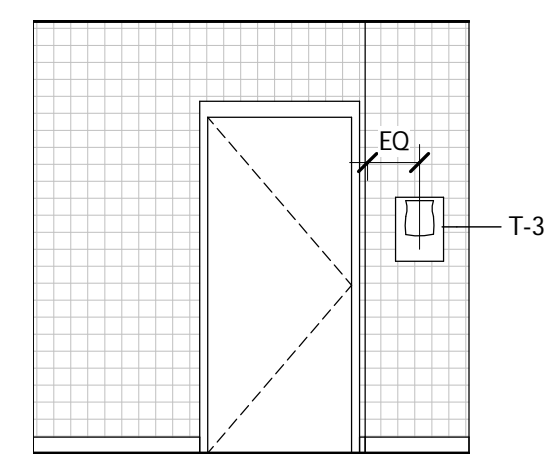
4 STAFF TOILET 286 - ELEV. C
 A7.05 A7.05 1/4" = 1'-0"



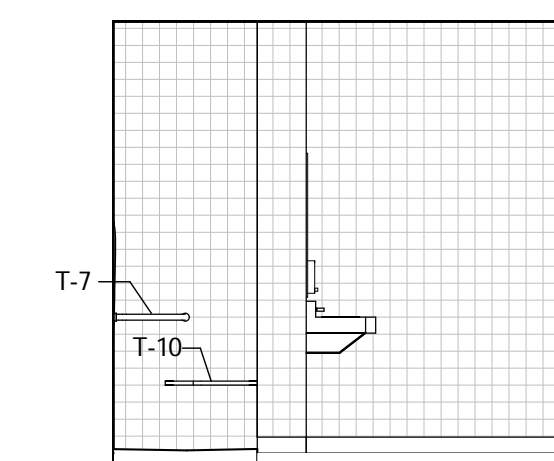
5 STAFF TOILET 286 - ELEV. D
 A7.05 A7.05 1/4" = 1'-0"



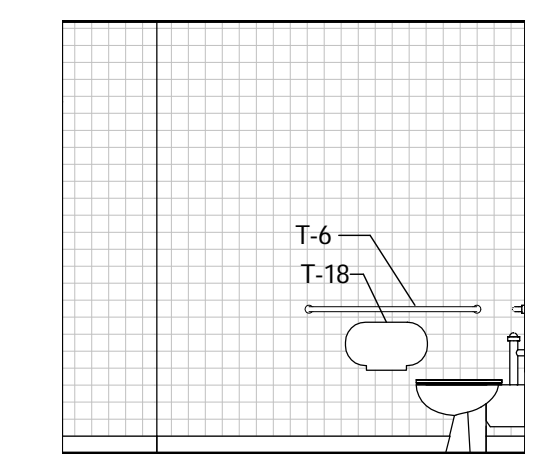
6 SINGLE BATHROOM 287 - ELEV. A
 A7.05 A7.05 1/4" = 1'-0"



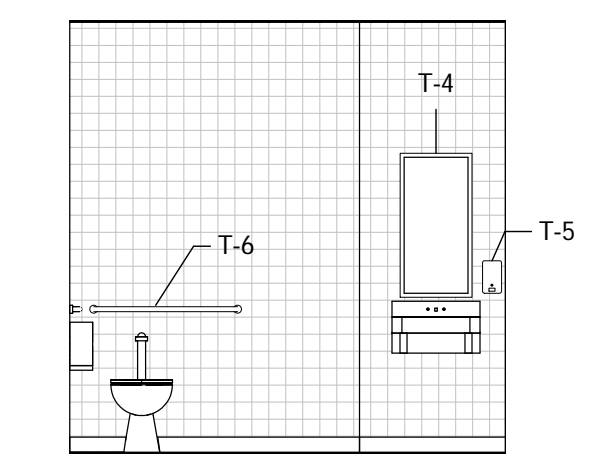
7 SINGLE BATHROOM 287 - ELEV. B
 A7.05 A7.05 1/4" = 1'-0"



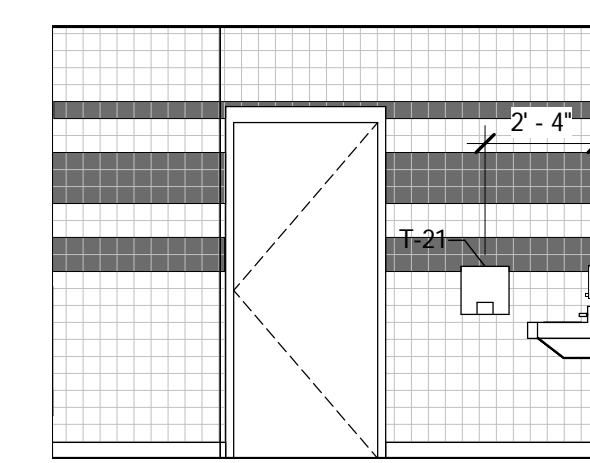
8 SINGLE BATHROOM 287 - ELEV. C
 A7.05 A7.05 1/4" = 1'-0"



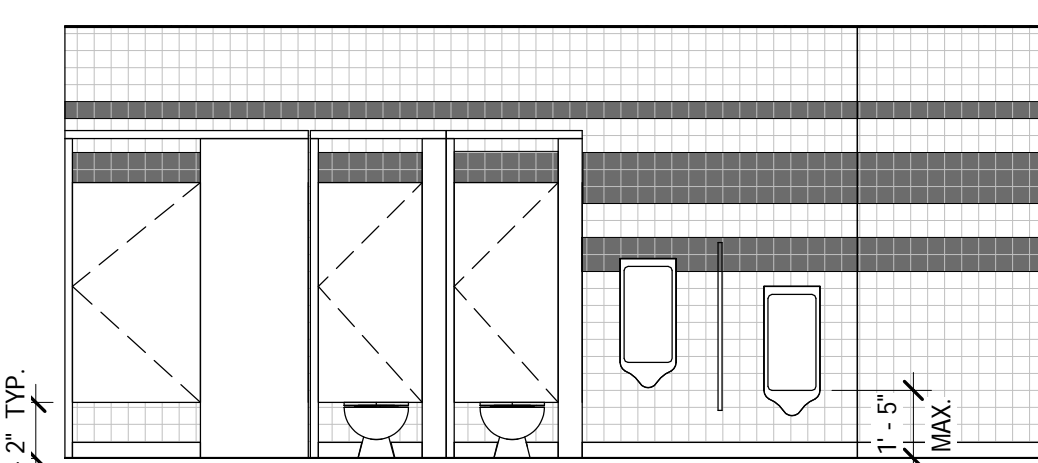
9 SINGLE BATHROOM 287 - ELEV. D
 A7.05 A7.05 1/4" = 1'-0"



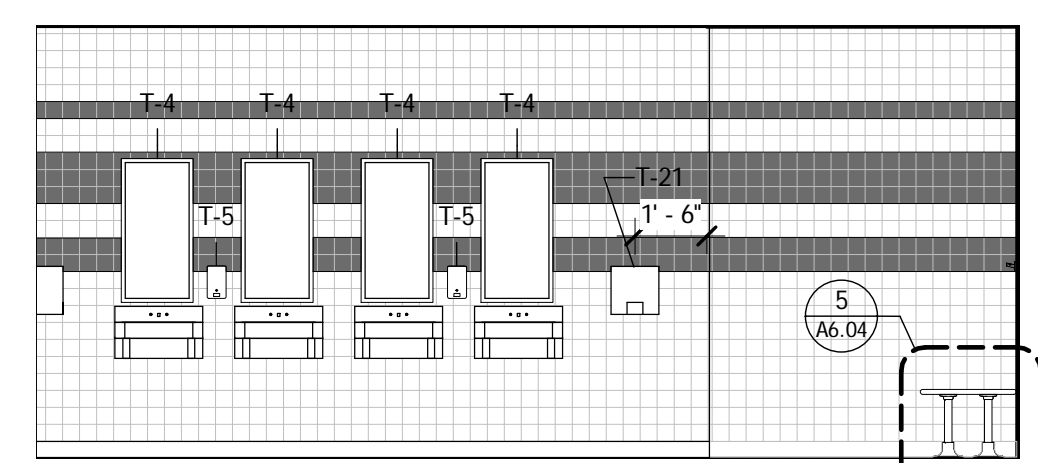
10 MEN'S BATHROOM 288 - ELEV. A
 A7.05 A7.05 1/4" = 1'-0"



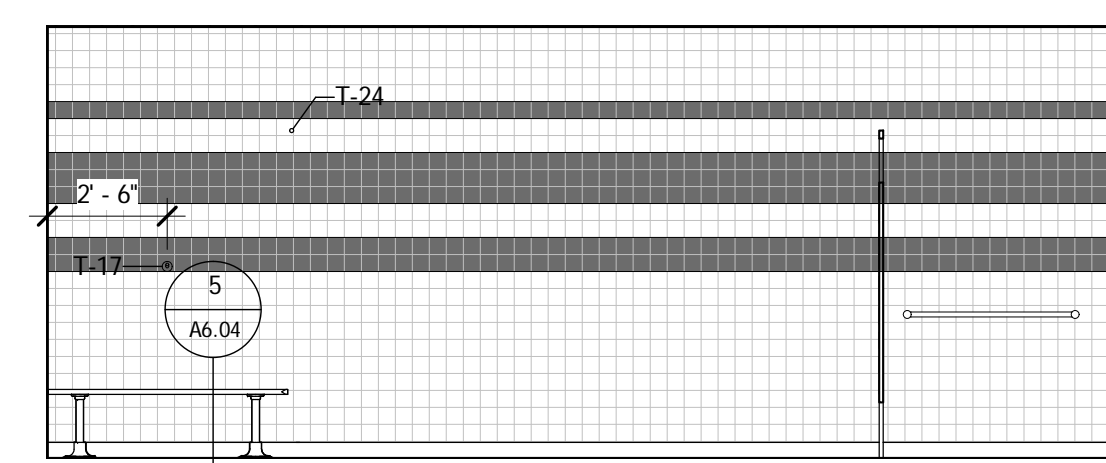
11 MEN'S BATHROOM 288 - ELEV. B
 A7.05 A7.05 1/4" = 1'-0"



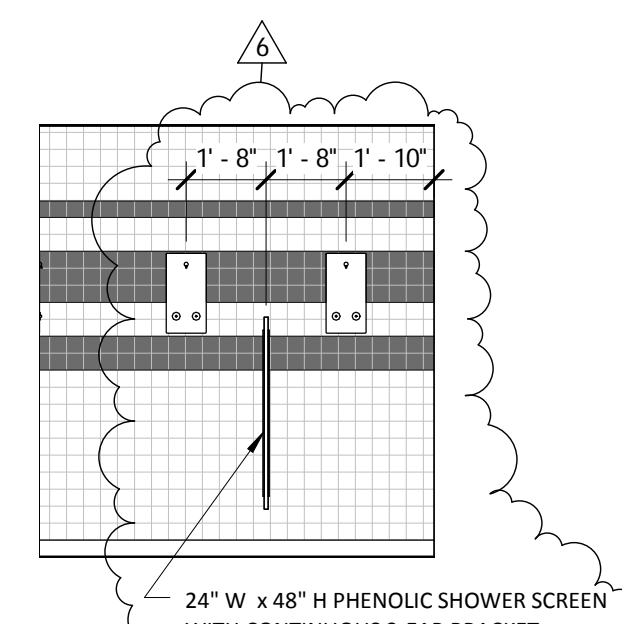
12 MEN'S BATHROOM 288 - ELEV. C
 A7.05 A7.05 1/4" = 1'-0"



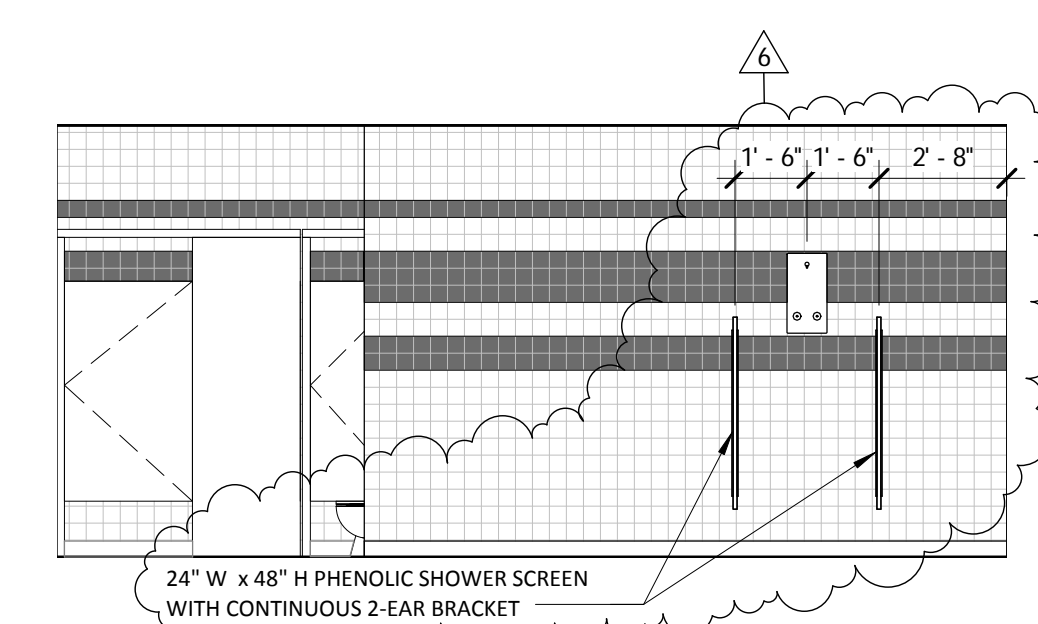
13 MEN'S BATHROOM 288 - ELEV. D
 A6.22 A7.05 1/4" = 1'-0"



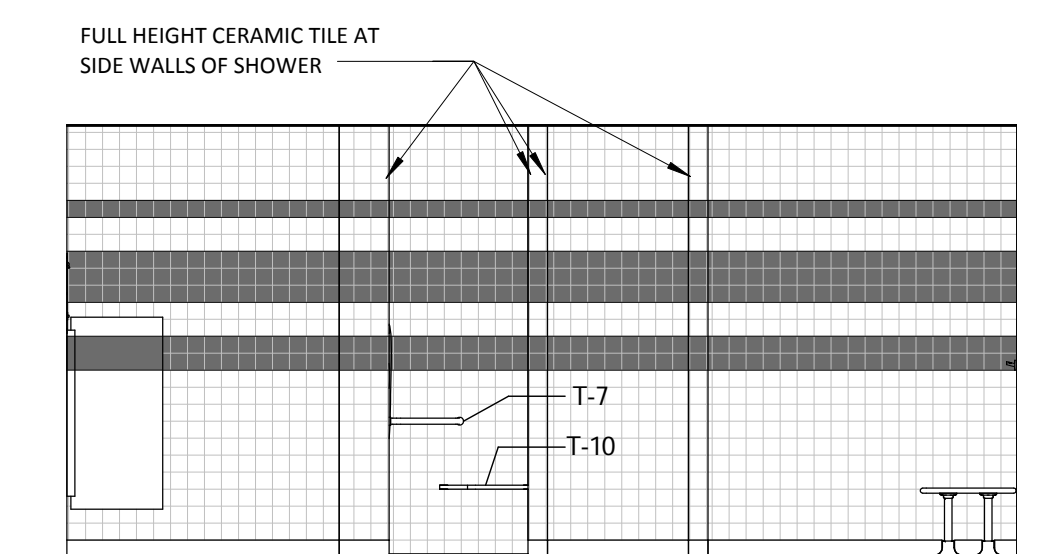
14 MEN'S BATHROOM 288 - ELEV. A1
 A7.05 A7.05 1/4" = 1'-0"



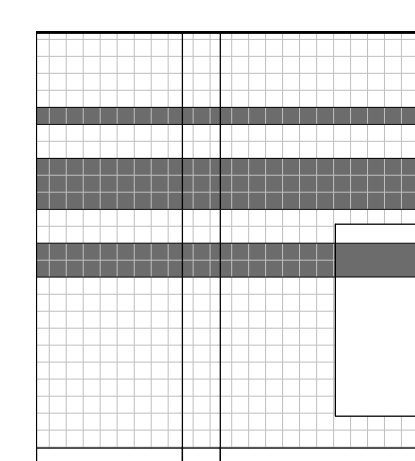
15 MEN'S BATHROOM 288 - ELEV. B1
 A7.05 A7.05 1/4" = 1'-0"



16 MEN'S BATHROOM 288 - ELEV. C1
 A7.05 A7.05 1/4" = 1'-0"



17 MEN'S BATHROOM 288 - ELEV. D1
 A7.05 A7.05 1/4" = 1'-0"



GENERAL NOTES:
 1. REFER TO A0.0 FOR TYPICAL MOUNTING HEIGHTS AND REQUIREMENTS FOR TOILET ROOM FIXTURES AND ACCESSORIES.
 2. REFER TO A5.25 FOR SHOWER PAN DETAILS.

TOILET ACCESSORIES SCHEDULE			
Type Mark	Description	Manufacturer	Model No.
T-3	Paper Towel Dispenser	Von Drehle	VD8880
T-4	Framed Wall Mirror, 18" W x 36" H		
T-5	Soap Dispenser - 800ml carton refill	Gojo	#Goj9034
T-6	Grab Bar Set	Bobrick	B-5806 Series
T-7	Two-Wall Shower Grab Bar, Transfer-type Shower	Bobrick	B-6861 Series
T-8	Two-Wall Shower Grab Bar, Roll-In-type Shower	Bobrick	B-6861 Series
T-9	Foldable Shower Seat, Rectangular	Bradley Corporation	9562
T-10	Foldable Shower Seat, L-Shaped	Bradley Corporation	9569
T-11	Fold-Up Bathtub Seat	American Specialties	8358
T-12	Bathtub Grab Bar Set	Bobrick	B-6861 Series
T-17	Robe Hook	Bobrick	B-7671
T-18	Twin Jumbo Bath Tissue Roll Dispenser	SCA Tork	56TR
T-21	Hand dryer	Xlerator	Original with Optional ADA-Compliant Recess Kit
T-22	Baby Changing Station	Koala Bear Care	KB200
T-23	Grab Bar Set - Ambulatory	Bobrick	B-5806 Series
T-24	Heavy-Duty Shower Curtain Rod	Bobrick	B-6107 Series
T-25	Specimen Pass-Thru Cabinet	Bradley Corporation	9813

SEAL	PROFESSIONAL CERTIFICATION	AS-BUILT / REVISION	DATE	P.W.A. NO.	KEY SHEET	POSITION SHIT	DRAWING SCALE	APPROVED BY:
	I HEREBY CERTIFY THAT THESE DOCUMENTS WERE PREPARED OR APPROVED BY ME, AND THAT I AM A DULY LICENSED PROFESSIONAL ARCHITECT UNDER THE LAWS OF THE STATE OF MARYLAND. LICENSE NO. 23773 EXPIRATION DATE 11/24/16 ARCHITECT: LAURIE M. MCCLAIN, AIA						PLAN SCALE: 1/4" = 1'-0" PROFILE SCALE:	DIRECTOR
	DESIGN BY: Designer DWN BY: Author CHRD BY: Checker						FIELD ENGINEER	CHIEF

BALTIMORE COUNTY OFFICE OF BUDGET AND FINANCE, PROPERTY MANAGEMENT
 Eastern Family Resource Center
 TOILET PLANS & ELEVATIONS - LEVEL 2
 9150 Franklin Square Drive, Rosedale, MD 21237

SHEET DESIGNATION	CONTRACT NO.
A7.05	15025P00
	JOB ORDER NO.
	249-218-0100-0614
	SHEET OF
	DRAWING NO.
	FILE NO.

BID SET 06/16/15



SUBDIVISION:

ELECT. DISTRICT NO. 14C6