

STATE OF MARYLAND - DPSCS

BCDC YOUTH DETENTION CENTER

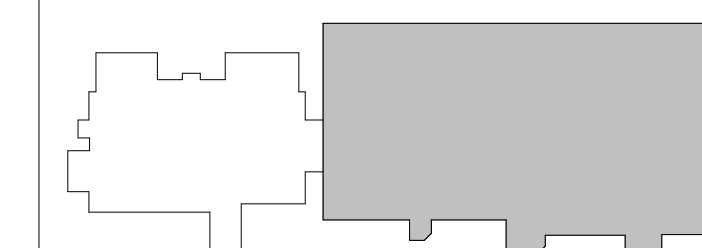
BALTIMORE MARYLAND

SEAL



THE CONTRACT DOCUMENTS FOR THE INDICATED PUBLIC IMPROVEMENT WERE PREPARED UNDER MY SUPERVISION AND, TO THE BEST OF MY KNOWLEDGE, INFORMATION AND BELIEF, THEY COMPLY WITH THE RELEVANT BUILDING CODES OF THE STATE OF MARYLAND. LICENSE NUMBER 13814 EXPIRATION DATE 3/28/2015.

KEY PLAN



SCALE

As indicated

3	ADD-3	02-19-2015
No.	Description	Date

REVISIONS

DRAWN BY	TJM
APPROVED BY	JLB
CHECKED BY	CRD
DATE	02-05-2015

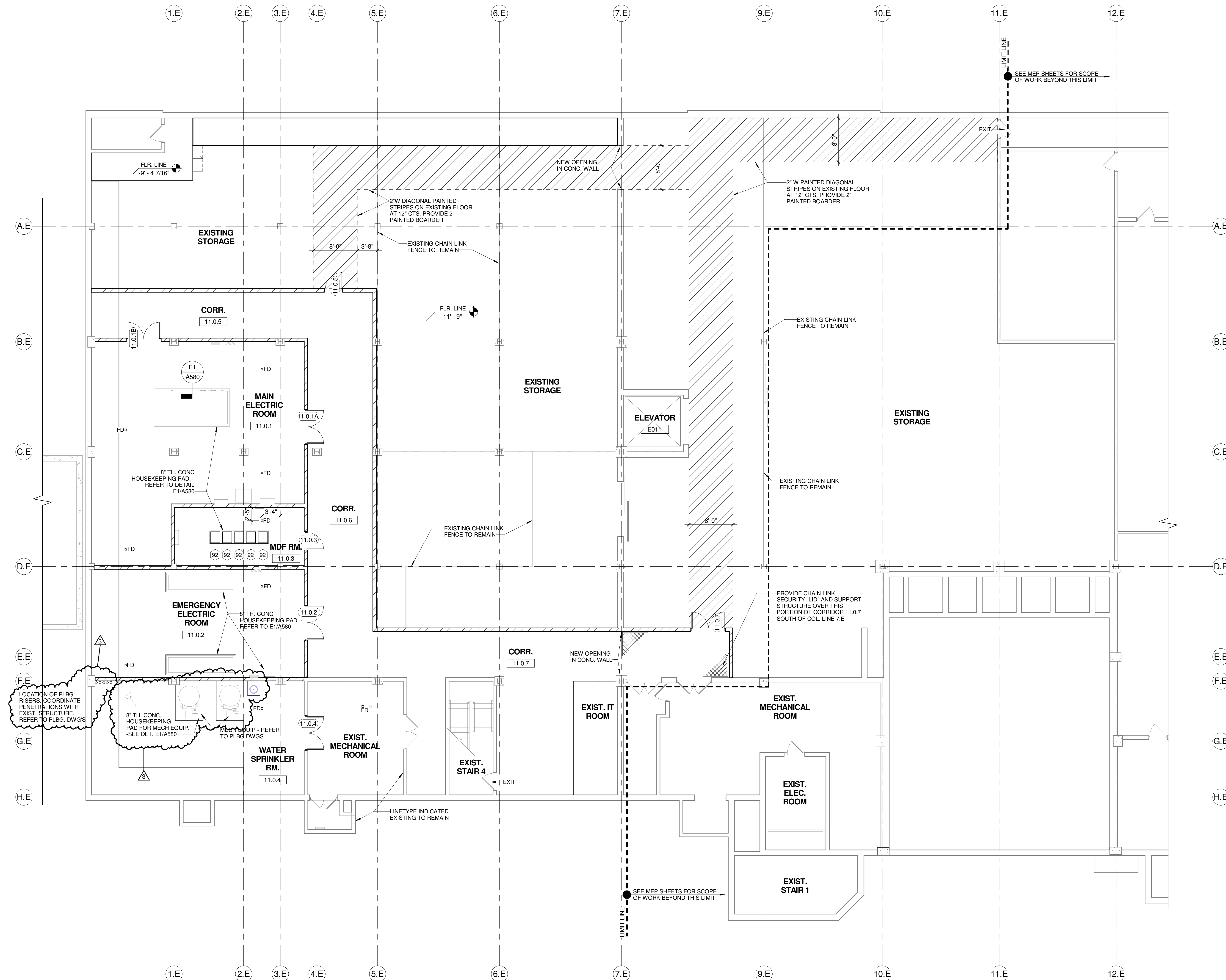
TITLE

BASEMENT
FLOOR PLAN -
AREA B

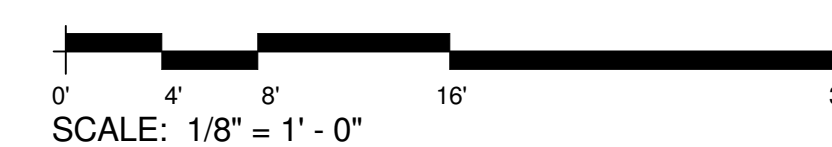
PSA-DEWBERRY PROJECT NO.	50061725
DPSCS CONTRACT NO.	KT-000-150-C01

AP100B

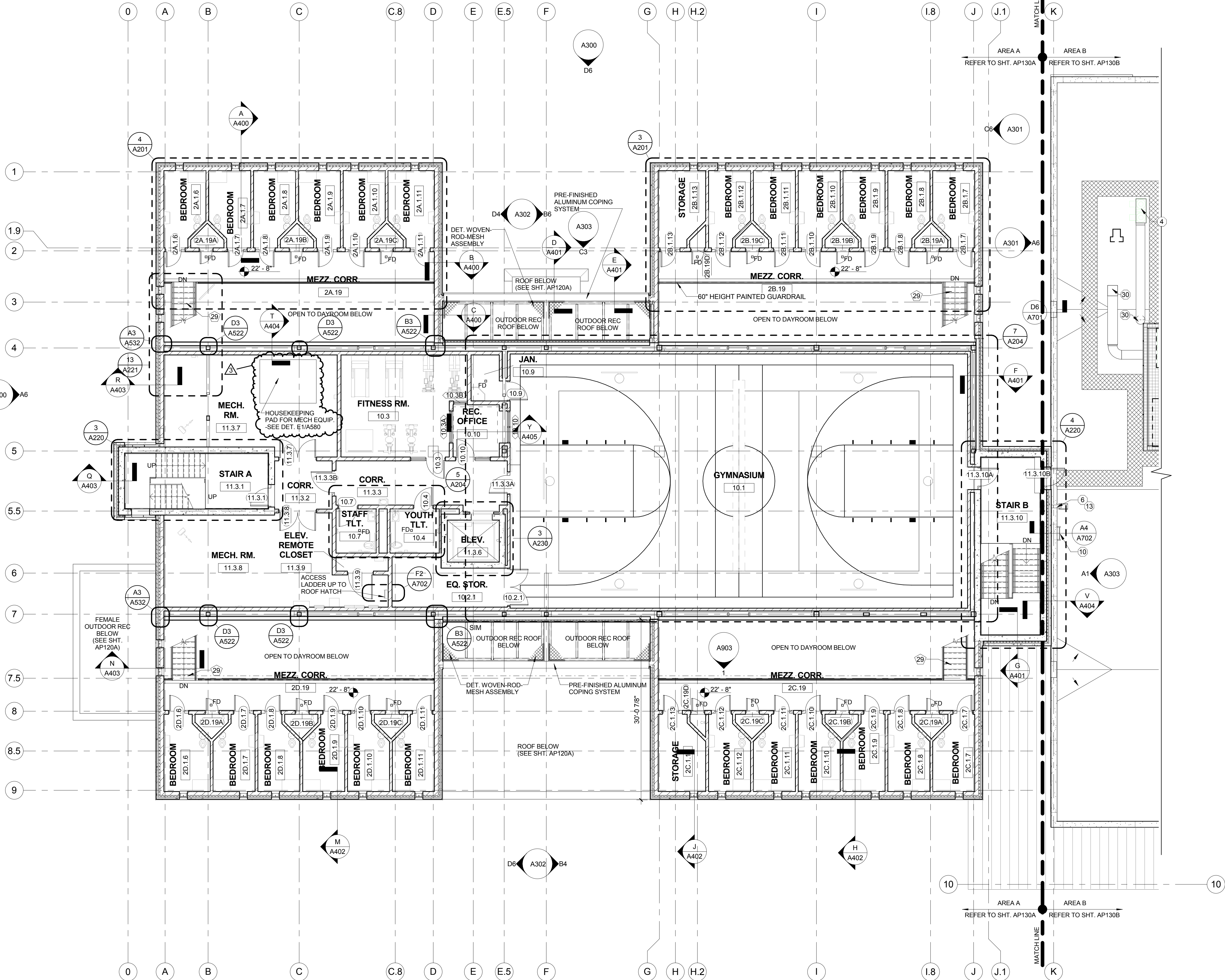
SHEET NO.



1 BASEMENT FLOOR PLAN - AREA B
Scale: 1/8" = 1'-0"



F
E
D
C
B
A



1 THIRD FLOOR AND MEZZ. PLAN
Scale: 1/8" = 1'-0"

0' 4' 8' 16' 32'
SCALE: 1/8" = 1' - 0"

GENERAL NOTES

1. PROVIDE TAMPER PROOF METAL FASTENERS PER PROJECT MANUAL SPECIFICATIONS.
2. PROVIDE SECURITY JOINT SEALANTS PER PROJECT MANUAL SPECIFICATIONS.
3. REFER TO EQUIPMENT SCHEDULE ON F.E. SHEET SERIES FOR REQUIREMENTS RELATED TO EQUIPMENT TAGGED (E) HERE.
4. SET FLOOR DRAINS FLUSH WITH FINISH FLOORING, UNLESS NOTED OR DETAILED OTHERWISE. SEE F.M. FINISH SCHEDULE FOR FLOOR FINISH REQUIREMENTS.
5. REFER TO A600 SHTS FOR ADDITIONAL REQUIREMENTS RELATED TO ARCHITECTURAL DOORS AND GLAZED FRAMES TAGGED HERE.
6. REFER TO DETENTION DRAWINGS FOR ADDITIONAL REQUIREMENTS RELATED TO DETENTION WINDOWS, DOORS, AND GLAZED FRAMES TAGGED HERE.
7. REFER TO DETENTION DWGS FOR ADDITIONAL REQUIREMENTS RELATED TO METAL SECURITY MESH ENCLOSURES SHOWN HERE.
8. REFER TO ARCH SITE PLANS AND CIVIL DWGS FOR ADDITIONAL REQUIREMENTS RELATED TO SITE WORK REFERENCED HERE.
9. REFER TO THE A200 SERIES DRAWINGS - LARGE SCALE FLOOR PLANS FOR ADDITIONAL CONSTRUCTION DETAIL INDICATORS ASSOCIATED TO THESE FLOOR PLANS.
10. SET FLOOR DRAINS (FD) FLUSH WITH FINISH FLOOR UNLESS NOTED OTHERWISE.

KEYED PLAN (E) NOTES

NO.	DESCRIPTION
1	WALL MOUNTED LAV (ADA) - REFER TO PLBG DWGS
2	WALL MOUNTED WC (ADA) - REFER TO PLBG DWGS
3	ELECTRIC WATER COOLER (ADA) - REFER TO PLBG DWGS
4	MOP SINK BASIN - REFER TO PLBG DWGS
5	DETENTION COMBINATION UNIT (ADA) - REFER TO DET AND PLBG DWGS
6	DETENTION COMBINATION UNIT - REFER TO DET AND PLBG DWGS
7	18"W x 18"H ACCESS PANEL, 8" MIN. A.F.F. - COORD. EXACT LOCATION
8	18"W x 18"H DETENTION ACCESS PANEL, 8" MIN. A.F.F. - COORD. EXACT LOCATION - REFER TO DET. DWG D 501
9	24"W x 24"H ACCESS PANEL, 8" MIN. A.F.F. - COORD. EXACT LOCATION
10	15"W x 15"H ACCESS PANEL - COORD. EXACT LOCATION
11	DETENTION SHOWER FIXTURE - REFER TO PLBG DWGS
12	DETENTION WATER FOUNTAIN - REFER TO PLBG DWGS
13	DETENTION LAV (ADA) - REFER TO PLBG DWGS
14	DETENTION WC (ADA) - REFER TO PLBG DWGS
15	SINK WITH FOOT PEDAL CONTROLS - REFER TO PLBG DWGS
16	NOT USED
17	DETENTION SHOWER FIXTURE (ADA) - REFER TO PLBG DWGS
18	WALL MTD 3-TIER OPEN SHELVING - REFER TO DETENTION DWGS
19	DETENTION DESK - REFER TO DETENTION DWGS
20	WALL MTD OPEN SHELF, LOCATED OVER DESK - REFER TO DETENTION DWGS
21	FLOOR MTD DETENTION STOOL, CENTER ON DESK - REFER TO DETENTION DWGS
22	FLOOR MTD DETENTION BED - REFER TO DETENTION DWGS
23	WALL MTD DETENTION MIRROR - REFER TO DETENTION DWGS
24	HDPE WALL GUARD - TYPE A - DTL A6/A581
25	HDPE WALL GUARD - TYPE B - DTL A6/A581
26	HDPE 3 1/2" CORNER GUARD - TYPE A - DTL A6/A581
27	HDPE 3 1/2" CORNER GUARD - TYPE B - DTL A6/A581
28	HDPE 3 1/2" CORNER GUARD - TYPE C - DTL A6/A581
29	PAINTED MTL STAIRS, STL BAR GRATE TREADS, PIPE GUARDRAIL AND HANDRAILS, TYP IN HOUSING UNITS
30	MOP RACK

ROOF PLAN GENERAL NOTES

1. REFER TO DEMOLITION DRAWINGS FOR SELECTIVE DEMOLITION OF EXISTING ROOF STRUCTURE, ROOF INSULATION, ROOFING MEMBRANE SYSTEM, AND ROOF EDGE ASSEMBLY.
2. LOCATE, DOCUMENT, AND REPORT ALL EXISTING ROOF PENETRATIONS TO REMAIN WITHIN LIMITS OF WORK.
3. TAPERED INSULATION (TAPERED, CRICKETS, SADDLES) TO BE 1/4" PER FOOT MINIMUM TO ROOF DRAINS OR SCUPPERS, AS INDICATED.
4. COORDINATE WITH STRUCTURAL DRAWINGS FOR SLOPED STRUCTURE.
5. SHOP DRAWINGS OF TAPERED INSULATION SHALL ACCOUNT FOR CAMBER IN STRUCTURE TO INSURE POSITIVE DRAINAGE.
6. PROVIDE TAPERED INSULATION CRICKETS FOR POSITIVE DRAINAGE AROUND ROOF PENETRATIONS AND EQUIPMENT CURBS.
7. PROVIDE PRECAST CONCRETE SPLASH BLOCKS WHERE DOWNSPOUTS OR SECONDARY DRAIN LINES TONGUES OUTFLOW ONTO GRADE.
8. PROVIDE STAINLESS STEEL SPLASH PANS WHERE DOWNSPOUTS OUTFLOW ONTO ROOFS BELOW. SEE A700 SHTS FOR TYPICAL STAINLESS STEEL SPLASH PAN DETAILS.
9. ROOF WALKWAY PADS SHALL BE SPACED TO NOT INTERRUPT DRAINAGE.
10. PROVIDE ROOF WALKWAY PADS AT TOP AND BOTTOM OF ROOF LADDERS AND ROOF ACCESS DOORS.

A JOINT-VENTURE BETWEEN
PSA-DEWBERRY +
PENZA BAILEY ARCHITECTS

EBA
ENGINEERING

SIDHU ASSOCIATES, INC.
(Consulting Engineers)

HOPE FURRER
Associates, Inc.

TERRALOGOS
NEW ARCHITECTURE

R&R
designer, inc.

LEWICKI
ESTIMATING
SERVICES, INC.

STATE OF MARYLAND - DPSCS
BCDC YOUTH DETENTION CENTER
BALTIMORE MARYLAND

SEAL

THE CONTRACT DOCUMENTS FOR THE INDICATED PUBLIC IMPROVEMENT WERE PREPARED UNDER MY SUPERVISION AND, TO THE BEST OF MY KNOWLEDGE, INFORMATION AND BELIEF, THEY COMPLY WITH THE RELEVANT BUILDING CODES OF THE STATE OF MARYLAND. LICENSE NUMBER 13814, EXPIRATION DATE 3/28/2015.

KEY PLAN

SCALE

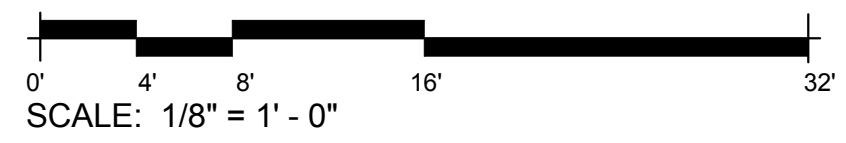
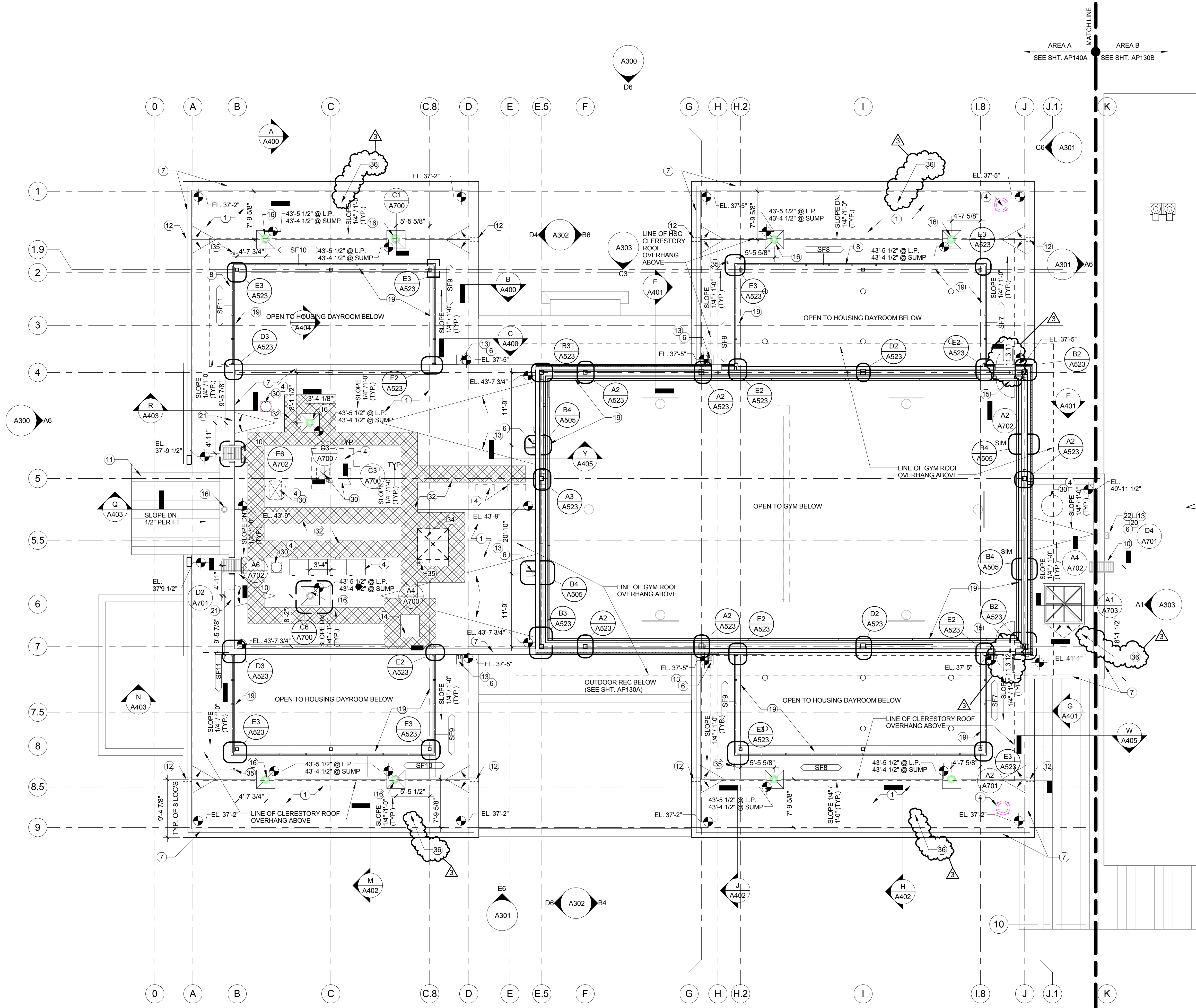
As indicated

No.	Description	Date
3	ADD-3	02-19-2015
REVISIONS		
DRAWN BY TJM		
APPROVED BY JLB		
CHECKED BY CRD		
DATE 02-05-2015		
TITLE		
THIRD FLOOR AND MEZZ. PLAN		

PSA-DEWBERRY PROJECT NO. 50061725
DPSCS CONTRACT NO. KT-000-150-C01

AP130A
SHEET NO.

1 ROOF AND CLERESTORY PLAN
Scale: 1/8" = 1'-0"



GENERAL NOTES

1. PROVIDE TAMPER-PROOF METAL FASTENERS PER PROJECT MANUAL SPECIFICATIONS.
2. PROVIDE SECURITY JOINT SEALANTS PER PROJECT MANUAL SPECIFICATIONS.
3. REFER TO EQUIPMENT SCHEDULE ON FE SHEET SERIES FOR REQUIREMENTS RELATED TO EQUIPMENT TAGGED (E) HERE.
4. SET FLOOR DRAINS FLUSH WITH FINISH FLOORING, UNLESS NOTED OR DETAILED OTHERWISE. SEE RM FINISH SCHEDULE FOR FLOOR FINISH REQUIREMENTS.
5. REFER TO A600 SHTS FOR ADDITIONAL REQUIREMENTS RELATED TO ARCHITECTURAL DOORS AND GLAZED FRAMES TAGGED HERE.
6. REFER TO DETENTION DRAWINGS FOR ADDITIONAL REQUIREMENTS RELATED TO DETENTION WINDOWS, DOORS, AND GLAZED FRAMES TAGGED HERE.
7. REFER TO DETENTION DWGS FOR ADDITIONAL REQUIREMENTS RELATED TO METAL SECURITY MESH ENCLOSURES SHOWN HERE.
8. REFER TO ARCH SITE PLANS AND CIVIL DWGS FOR ADDITIONAL REQUIREMENTS RELATED TO SITE WORK REFERENCED HERE.
9. REFER TO THE A200 SERIES DRAWINGS - LARGE SCALE FLOOR PLANS FOR ADDITIONAL CONSTRUCTION DETAIL INDICATORS ASSOCIATED TO THESE FLOOR PLANS.
10. SET FLOOR DRAINS (FD) FLUSH WITH FINISH FLOOR UNLESS NOTED OTHERWISE.

ROOF PLAN GENERAL NOTES

1. REFER TO DEMOLITION DRAWINGS FOR SELECTIVE DEMOLITION OF EXISTING ROOF STRUCTURE, ROOF INSULATION, ROOFING MEMBRANE SYSTEM, AND ROOF EDGE ASSEMBLY.
2. LOCATE, DOCUMENT, AND REPORT ALL EXISTING ROOF PENETRATIONS TO REMAIN WITHIN LIMITS OF WORK.
3. TAPERED INSULATION (TAPERED, CRICKETS, SADDLES) TO BE 1/4" PER FOOT MINIMUM TO ROOF DRAINS OR SCUPPERS, AS INDICATED.
4. COORDINATE WITH STRUCTURAL DRAWINGS FOR SLOPED STRUCTURE.
5. SHOP DRAWINGS OF TAPERED INSULATION SHALL ACCOUNT FOR CAMBER IN STRUCTURE TO INSURE POSITIVE DRAINAGE.
6. PROVIDE TAPERED INSULATION CRICKETS FOR POSITIVE DRAINAGE AROUND ROOF PENETRATIONS AND EQUIPMENT CURBS.
7. PROVIDE PRECAST CONCRETE SPLASH BLOCKS WHERE DOWNSPOUTS OR SECONDARY DRAIN LAMBS TOUNGUES OUTFLOW ONTO GRADE.
8. PROVIDE STAINLESS STEEL SPLASH PANS WHERE DOWNSPOUTS OUTFLOW ONTO ROOFS BELOW. SEE A700 SHTS FOR TYPICAL STAINLESS STEEL SPLASH PAN DETAILS.
9. ROOF WALKWAY PADS SHALL BE SPACED TO NOT INTERRUPT DRAINAGE.
10. PROVIDE ROOF WALKWAY PADS AT TOP AND BOTTOM OF ROOF LADDERS AND ROOF ACCESS DOORS.

KEYED ROOF (E) NOTES

Note Number	Note Description
1	T.P.O. ROOF SYSTEM ON TAPERED INSULATION (R-25 MIN.) ON FLAT STRUCTURAL FRAMING
2	METAL FRAMED SKYLIGHT-PORTION OF ROOF DECK TO BE REMOVED
3	EXIST. ROOF DRAIN TO REMAIN
4	ROOF TOP EQUIPMENT (SEE MECH. DWG'S)
5	8"x6" PRE-FINISHED ALUM. GUTTER
6	4"x6" PRE-FINISHED ALUM. DOWNSPOUT
7	PRE-FINISHED ALUMINUM COPING SYSTEM
8	CLERESTORY CLEAR ANODIZED THERMALLY BROKEN ALUMINUM STOREFRONT SYSTEM
10	PAINTED GALV. MTL. ACCESS LADDER
11	PRE-FINISHED STANDING SEAM ROOFING AND RIGID INSUL. ON SLOPING STRUCTURAL FRAMING
12	SECONDARY ROOF DRAIN - 8" W. x 8" H. ALUMINUM SCUPPER - SEE DET. 1/A701
13	ALUMINUM SPLASH PAN
14	ROOF ACCESS HATCH
15	PRE-FINISHED DETENTION ACCESS PANEL
16	PRIMARY ROOF DRAIN (SEE PLBG. DWG'S)
19	DETENTION WOVEN-ROD-MESH ASSEMBLY
20	PRE-FINISHED ALUM. CONDUCTOR HEAD
21	SECONDARY ROOF DRAIN - 24" W. x 8"H. ALUMINUM SCUPPER - SEE DET. 4/A701
22	PRIMARY ROOF DRAIN - 8" W. x 8" H. ALUMINUM SCUPPER - SEE DET. 5/A701
26	GUTTER EXPANSION JOINT WITH COVER PLATE
27	SEAM-MOUNTED, RAIL-TYPE SNOW GUARD (LOCATED AND INSTALLED AS PER MANUFACTURER REQUIREMENTS
28	STEEL GRATE DECK
29	DUNNAGE BEAMS AND COLUMNS - REFER TO STRUCTURAL DWG'S
30	PROVIDE DUCT TRANSITIONS AT ROOF PENETRATION AS NECESSARY PER MEP DWG'S
31	REMOVEABLE GALVANIZED GUARDRAIL PANEL
32	FLEXIBLE WALKWAY
34	ANTENNA EQUIPMENT (NON-PENETRATING MOUNT) - COORDINATE WITH ELEC. DWG'S
35	4" VENT THROUGH ROOF - REFER TO PLBG DWG'S
36	PROVIDE ROOF ANCHOR FALL PROTECTION SYSTEM, THIS ROOF - REFER TO PROJECT MANUAL SPEC SECTION 07 72 00

A JOINT-VENTURE BETWEEN
PSA-DEWBERRY +
PENZA BAILEY ARCHITECTS

EBA
ENGINEERING

SIDHU ASSOCIATES, INC.
(Consulting Engineers)
ARCHITECTURE PLANNING DESIGN
11320 WILLOW, MARYLAND 21091
PHONE (410) 258-1115

HOPE FURRER
Associates, Inc.

TERRA LOGOS
NEW ARCHITECTURE

R&R
designer, inc.

LEWICKI
ESTIMATING
SERVICES, INC.

STATE OF MARYLAND - DPSCS

BCDC YOUTH DETENTION CENTER

BALTIMORE MARYLAND

SEAL

THE CONTRACT DOCUMENTS FOR THE INDICATED PUBLIC IMPROVEMENT WERE PREPARED UNDER MY SUPERVISION AND, TO THE BEST OF MY KNOWLEDGE, INFORMATION AND BELIEF, THEY COMPLY WITH THE RELEVANT BUILDING CODES OF THE STATE OF MARYLAND. LICENSE NUMBER 13814, EXPIRATION DATE 3/28/2015.

KEY PLAN

SCALE

As indicated

No.	Description	Date
3	ADD-3	02-19-2015

REVISIONS

DRAWN BY DEW

APPROVED BY JLB

CHECKED BY KAF

DATE 02-05-2015

TITLE

ROOF AND CLERESTORY PLAN

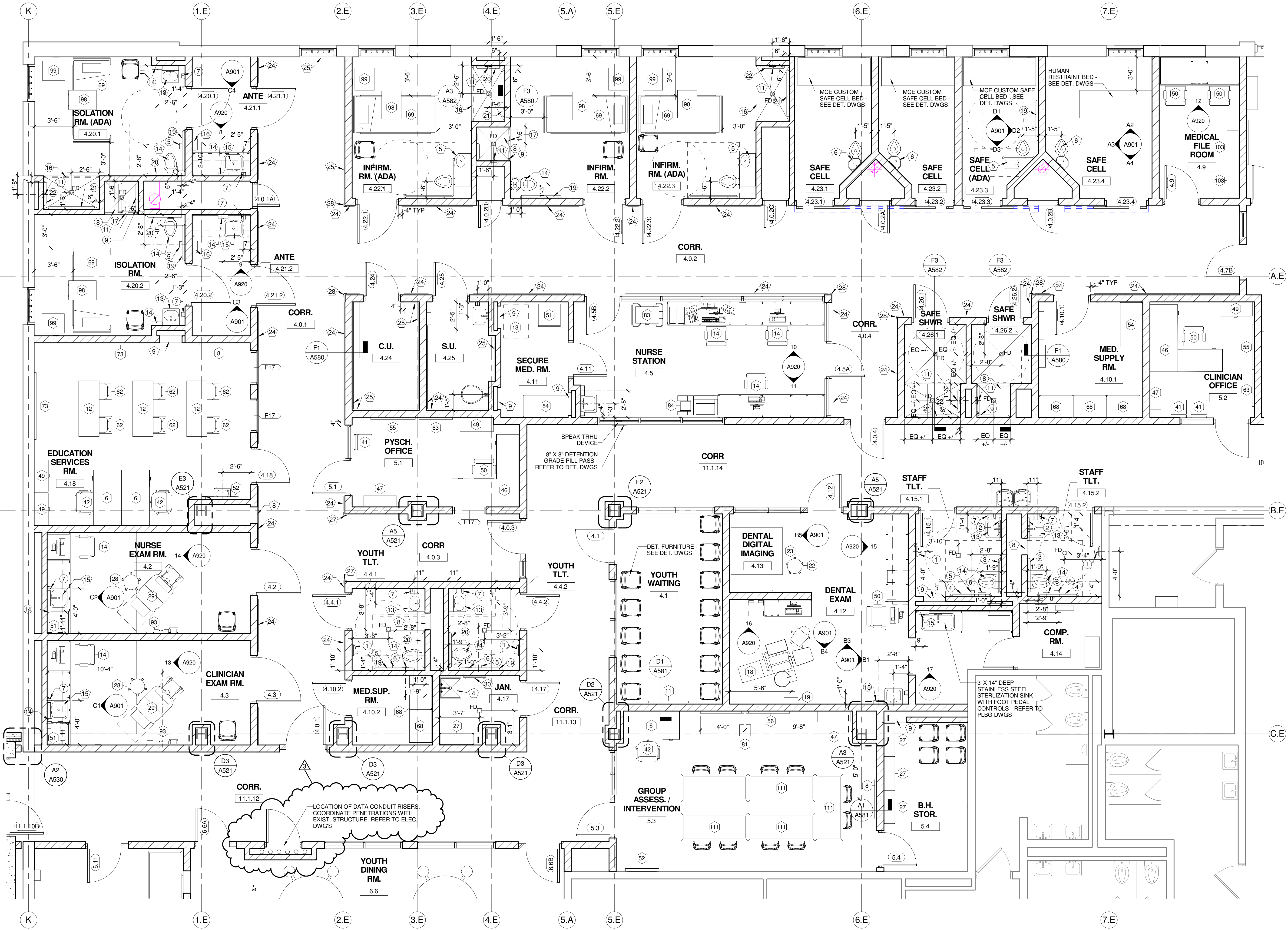
PSA-DEWBERRY PROJECT NO. 50061725

DPSCS CONTRACT NO. KT-000-150-C01

AP140A

SHEET NO.

F
E
D
C
B
A



1 MEDICAL AND BEHAVIORAL HEALTH
Scale: 1/4" = 1'-0"

- GENERAL NOTES
1. REFER TO DWGS FE DRAWINGS FOR FURNITURE, FIXTURE, AND EQUIPMENT
 2. REFER TO DETENTION SHEETS FOR DETENTION FURNITURE, FIXTURES, EQUIPMENT, DOORS, MOUNTING HEIGHTS, AND GLAZED FRAMES NOT NOTED HERE.
 3. SET FLOOR DRAINS FLUSH WITH FINISH FLOORING, UNLESS NOTED OR DETAILED OTHERWISE. SEE ROOM FINISH SCHEDULE FOR FLOORING FINISH REQUIREMENTS.
 4. ALL DIMENSIONS SHOWN ARE FROM FACE OF FINISHED WALL CONSTRUCTION OR THE CENTERLINE OF A PLUMBING FIXTURE, TOILET ACCESSORY, OR TOILET PARTITION.
 5. PROVIDE TAMPER-PROOF METAL FASTENERS PER PROJECT MANUAL SPECIFICATION SECTION 111900.
 6. PROVIDE SECURITY JOINT SEALANTS PER PROJECT MANUAL SPECIFICATION SECTION 111900.
 7. REFER TO PLUMBING DRAWINGS FOR ADDITIONAL PIPING ACCESS REQUIREMENTS. COORDINATE EXACT LOCATIONS OF ACCESS PANELS WITH PLUMB INSTALLATION.
 8. REFER TO SHEET A610 FOR TAGGED 'XX' HM FRAME ELEVATIONS.
 9. REFER TO SHEET A620 FOR TAGGED 'XX' ALUMINUM FRAME ELEVATIONS.
 10. REFER TO DETENTION SHEETS FOR TAGGED 'XX' DETENTION FRAME ELEVATIONS.

KEYED PLAN (A) NOTES

NO.	DESCRIPTION
1	WALL MOUNTED LAV (ADA) - REFER TO PLBG DWGS
2	WALL MOUNTED WC (ADA) - REFER TO PLBG DWGS
3	ELECTRIC WATER COOLER (ADA) - REFER TO PLBG DWGS
4	MOP SINK BASIN - REFER TO PLBG DWGS
5	DETENTION COMBINATION UNIT (ADA) - REFER TO DET AND PLBG DWGS
6	DETENTION COMBINATION UNIT - REFER TO DET AND PLBG DWGS
7	18"W x 18"H ACCESS PANEL, 8" MIN. A.F.F. - COORD. EXACT LOCATION
8	18"W x 18"H DETENTION ACCESS PANEL, 8" MIN. A.F.F. - COORD. EXACT LOCATION - REFER TO DET. DWG D 501
9	24"W X 24"H ACCESS PANEL, 8" MIN. A.F.F. - COORD. EXACT LOCATION
10	15"W x 15"H ACCESS PANEL - COORD. EXACT LOCATION
11	DETENTION SHOWER FIXTURE - REFER TO PLBG DWGS
12	DETENTION WATER FOUNTAIN - REFER TO PLBG DWGS
13	DETENTION LAV (ADA) - REFER TO PLBG DWGS
14	DETENTION WC (ADA) - REFER TO PLBG DWGS
15	SINK WITH FOOT PEDAL CONTROLS - REFER TO PLBG DWGS
16	NOT USED
17	DETENTION SHOWER FIXTURE (ADA) - REFER TO PLBG DWGS
18	WALL MTD 3-TIER OPEN SHELVING - REFER TO DETENTION DWGS
19	DETENTION DESK - REFER TO DETENTION DWGS
20	WALL MTD OPEN SHELF, LOCATED OVER DESK - REFER TO DETENTION DWGS
21	FLOOR MTD DETENTION STOOL, CENTER ON DESK - REFER TO DETENTION DWGS
22	FLOOR MTD DETENTION BED - REFER TO DETENTION DWGS
23	WALL MTD DETENTION MIRROR - REFER TO DETENTION DWGS
24	HDPE WALL GUARD - TYPE A - DTL A6/A581
25	HDPE WALL GUARD - TYPE B - DTL A6/A581
26	HDPE 3 1/2" CORNER GUARD - TYPE A - DTL A6/A581
27	HDPE 3 1/2" CORNER GUARD - TYPE B - DTL A6/A581
28	HDPE 3 1/2" CORNER GUARD - TYPE C - DTL A6/A581
29	PAINTED MTL STAIRS, STL BAR GRATE TREADS, PIPE GUARDRAIL AND HANDRAILS, TYP IN HOUSING UNITS
30	MOP RACK

TOILET ACCESSORIES SCHEDULE (B)

NO.	DESCRIPTION	MANUFACTURER	MODEL NO.	MOUNTING HEIGHT
1	SURFACE MOUNTED ELECTRIC HAND DRYER	XLERATOR	XL-SERIES	41" TO BOTTOM OF DRYER
2	WALL MIRROR - 24"W X 36"H, CENTER OVER SINK	BOBRICK	B-280 SERIES	40" TO BTM. OF REFLECTIVE SURFACE
3	1 1/2" O.D. STAINLESS STEEL GRAB BAR / 36" L	BOBRICK	B-6806 SERIES	36" TO TOP OF BAR
4	1 1/2" O.D. STAINLESS STEEL GRAB BAR / 42" L	BOBRICK	B-6806 SERIES	36" TO TOP OF BAR
5	SURFACE MOUNTED TOILET TISSUE DISPENSER	BOBRICK	B-2888	19" TO BOTTOM OF UNIT
6	SURFACE MOUNTED SANITARY NAPKIN DISPOSAL	BOBRICK	B-254	26" TO TOP OF UNIT
7	WALL MOUNTED SOAP DISPENSER	OWNER PROVIDED		42" TO BOTTOM OF DISPENSER
8	FOLD UP SHOWER SEAT	BOBRICK	B-517 (OR B-518)	18" TO TOP OF SEAT
9	1 1/2" O.D. STAINLESS STEEL SHOWER GRAB BAR / 18"x32" L-SHAPED W/ UNDER SLUNG PLATE HAVING WEEPS IN CORNERS	--	REFER TO DET. SPECS	REFER TO DET. SPECS
10	STAINLESS STEEL VERTICAL SHOWER GRAB BAR	BOBRICK	B-6806 SERIES	34" TO TOP OF BAR
11	PHENOLIC RESIN TOILET PARTITION	GENERAL PARTITIONS	COLOR-THRU PHENOLIC - 30 SERIES	FLOOR MOUNTED
12	1 1/2" O.D. STAINLESS STEEL GRAB BAR / 48" L	BOBRICK	B-6806 SERIES	36" TO TOP OF BAR
13	1 1/2" O.D. STAINLESS STEEL GRAB BAR / 24" L	BOBRICK	B-6806 SERIES	36" TO TOP OF BAR
14	RECESSED PAPER TOWEL DISPENSER AND WASTE RECEPTACLE	BOBRICK	B-3944	60" TO TOP OF UNIT
15	SURFACE MOUNTED PAPER TOWEL DISPENSER	BOBRICK	B-262	54" TO TOP OF UNIT
16	60" HEAVY DUTY SHOWER CURTAIN ROD WITH CONCEALED MOUNTING	BOBRICK	B-207	7'-0" A.F.F.
17	36" HEAVY DUTY SHOWER CURTAIN ROD WITH CONCEALED MOUNTING	BOBRICK	B-207	7'-0" A.F.F.
18	WALL MOUNTED FOLD-DOWN BABY CHANGING TABLE	BOBRICK	KB200	41" TO BOTTOM OF DRYER
19	1 1/2" O.D. STAINLESS STEEL GRAB BAR WITH UNDERSLUNG PLATE HAVING WEEPS IN CORNERS / 42" L	--	REFER TO DET. SPECS	REFER TO DET. SPECS
20	1 1/2" O.D. STAINLESS STEEL GRAB BAR WITH UNDERSLUNG PLATE HAVING WEEPS IN CORNERS / 36" L	--	REFER TO DET. SPECS	REFER TO DET. SPECS
21	1 1/2" O.D. STAINLESS STEEL GRAB BAR WITH UNDERSLUNG PLATE HAVING WEEPS IN CORNERS / 48" L	--	REFER TO DET. SPECS	REFER TO DET. SPECS
22	1 1/2" O.D. STAINLESS STEEL GRAB BAR WITH UNDERSLUNG PLATE HAVING WEEPS IN CORNERS / 24" L	--	REFER TO DET. SPECS	REFER TO DET. SPECS

A JOINT-VENTURE BETWEEN
PSA-DEWBERRY + **PENZA BAILEY ARCHITECTS**

EBA ENGINEERING
HOPE FURRER Associates, Inc.

SIDHU ASSOCIATES, INC.
EXECUTIVE PLANS, 10/10/15
11/20/15, 11/20/15, 11/20/15
PHONE (410) 283-1115

R&R designer, inc.

LEWICKI ESTIMATING SERVICES, INC.

STATE OF MARYLAND - DPSCS
BCDC YOUTH DETENTION CENTER
BALTIMORE MARYLAND

SEAL

ARCHITECT
13814
JAMES L. BEIGHT
STATE OF MARYLAND

THE CONTRACT DOCUMENTS FOR THE INDICATED PUBLIC IMPROVEMENT WERE PREPARED UNDER MY SUPERVISION AND, TO THE BEST OF MY KNOWLEDGE, INFORMATION AND BELIEF, THEY COMPLY WITH THE RELEVANT BUILDING CODES OF THE STATE OF MARYLAND. LICENSE NUMBER 13814, EXPIRATION DATE 3/28/2015.

KEY PLAN

SCALE

As indicated

No.	Description	Date
3	ADD-3	02-19-2015

REVISIONS

DRAWN BY	TJM
APPROVED BY	JLB
CHECKED BY	CRD
DATE	02-05-2015

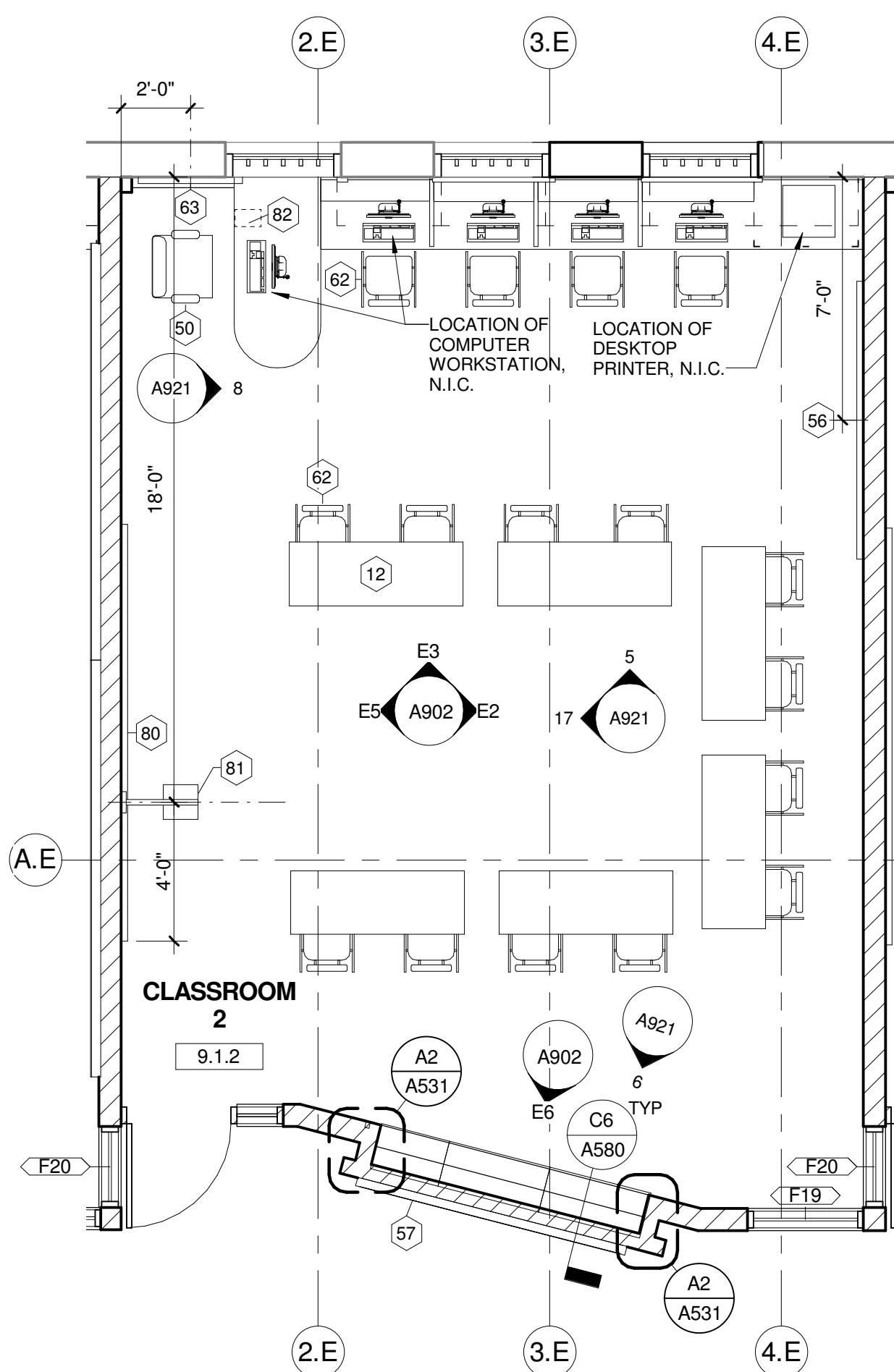
TITLE

LARGE SCALE FLOOR PLANS

PSA-DEWBERRY PROJECT NO. 50061725
DPSCS CONTRACT NO. KT-000-150-C01

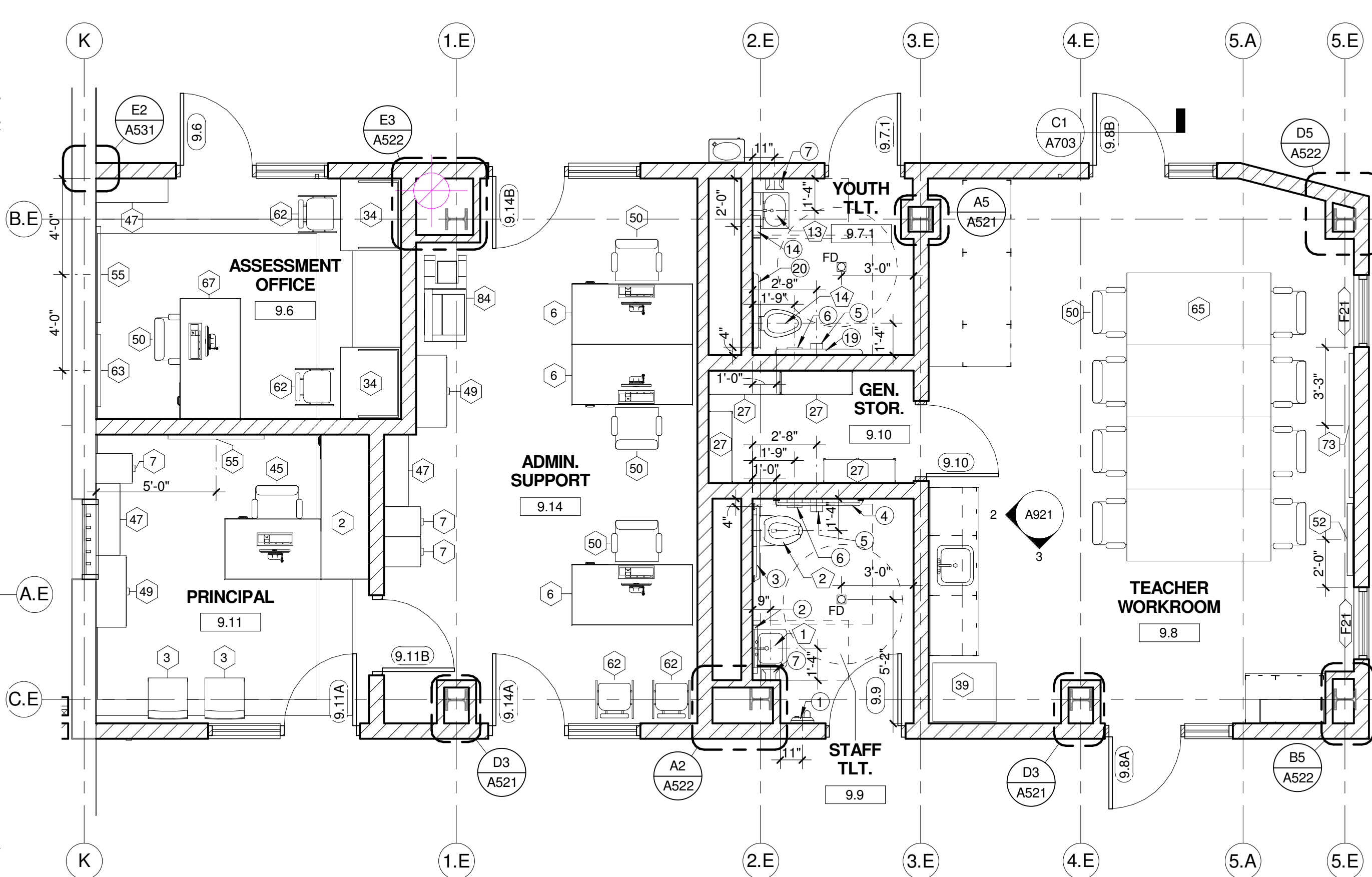
A202

SHEET NO.

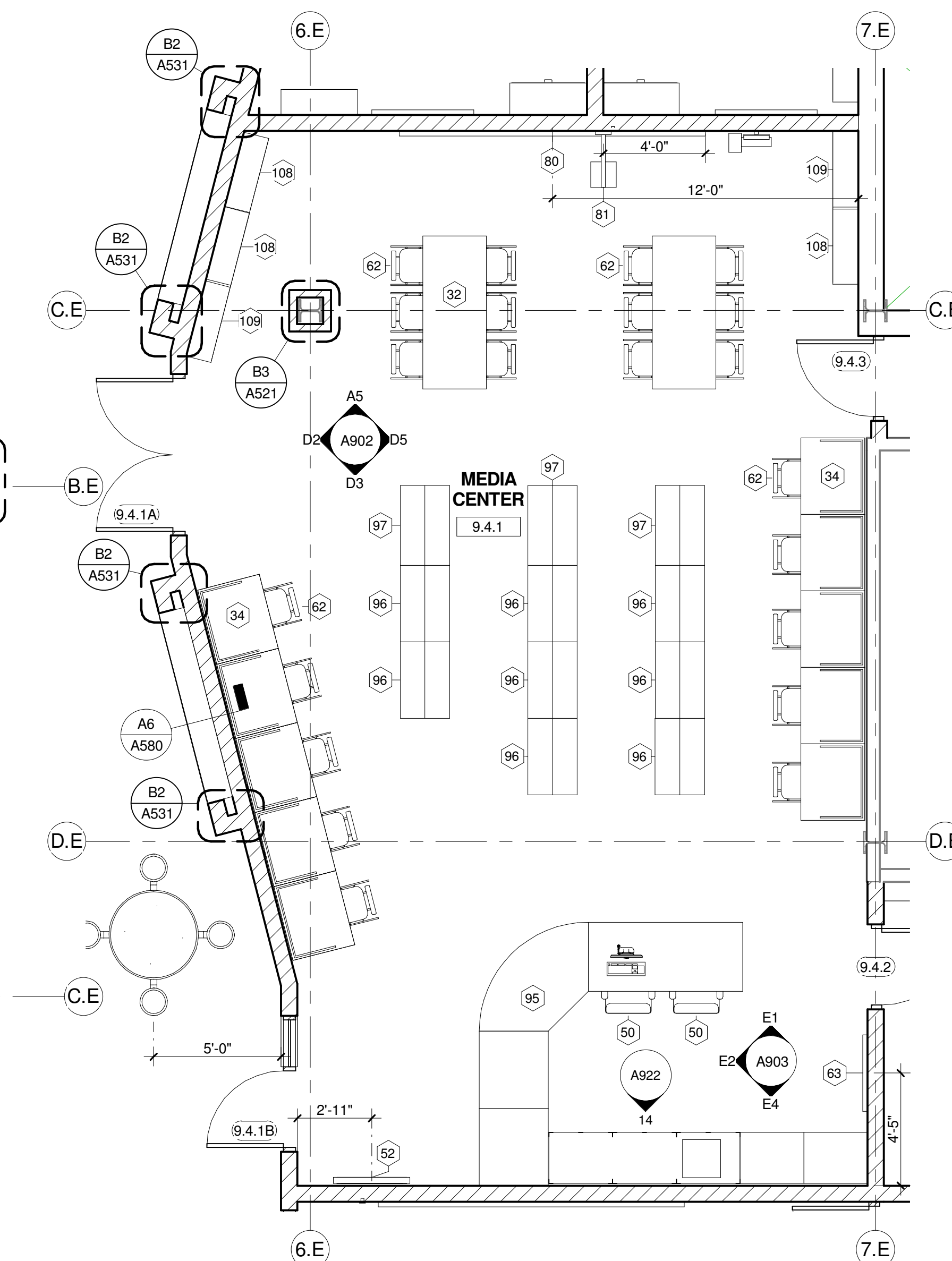


6 CLASSROOM

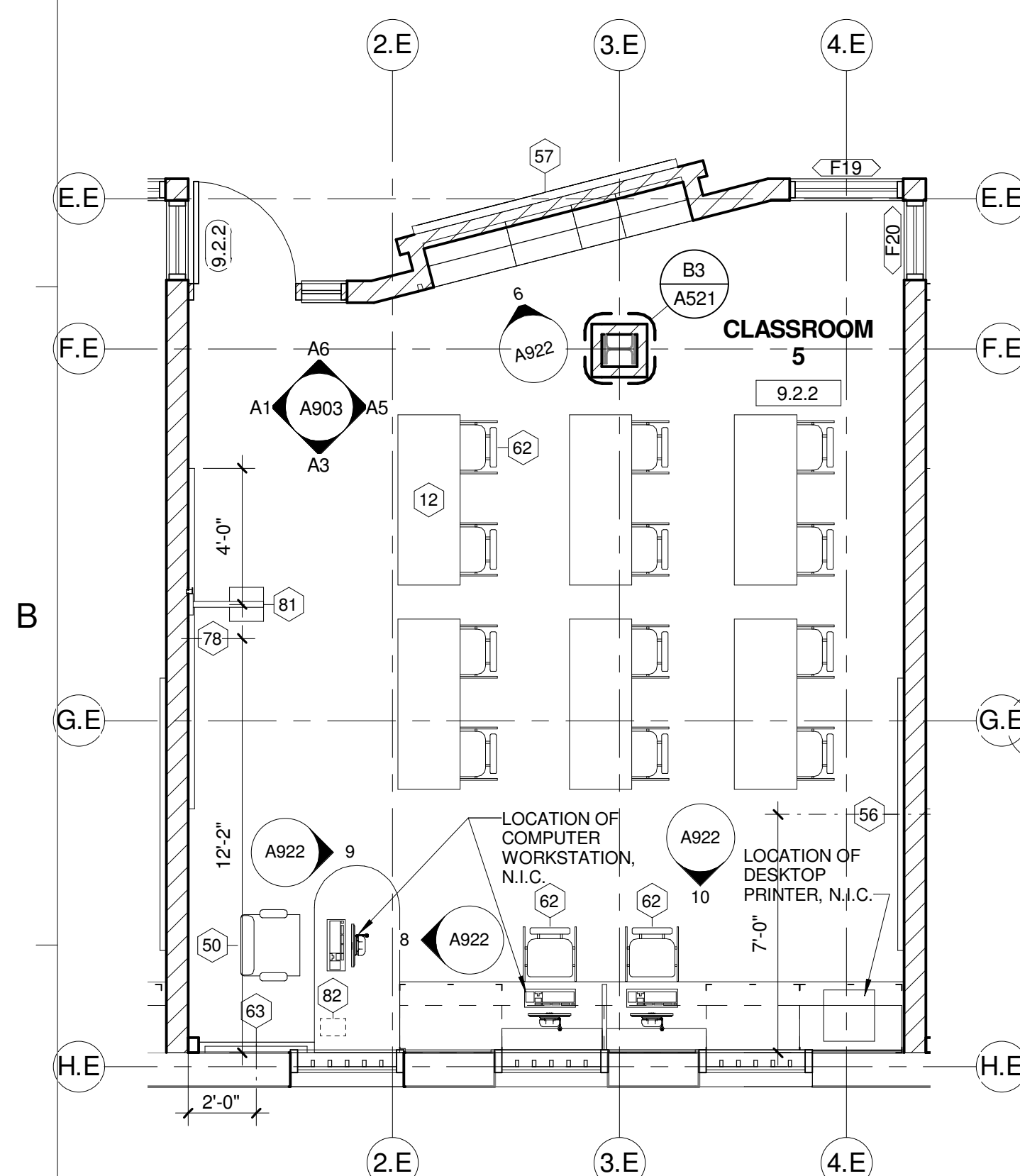
Scale: 1/4" = 1'-0" 1/AP120B



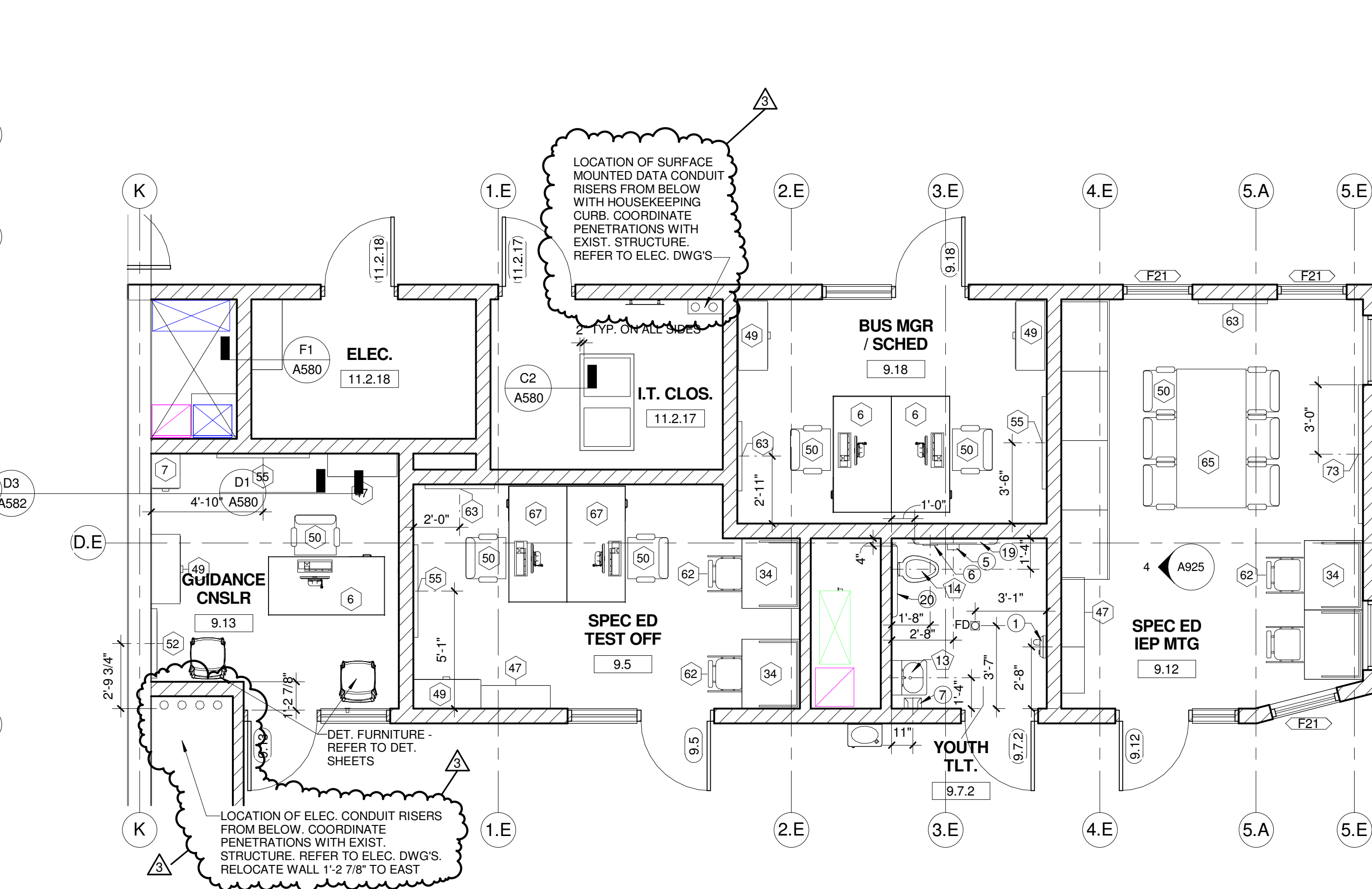
5 EDUCATION SUPPORT (ADA)
Scale: 1/4" = 1'-0" 1/AP120B



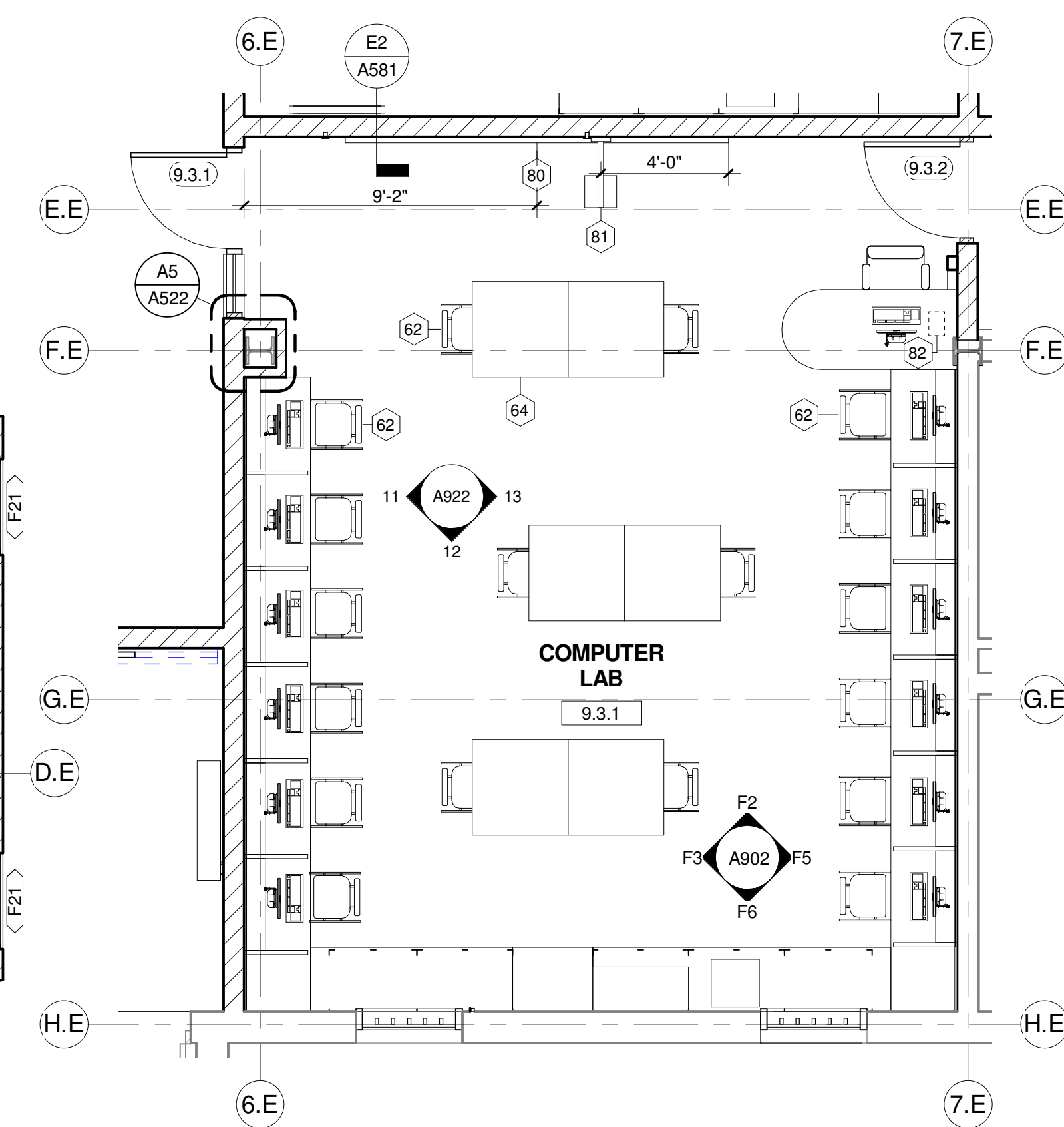
4 MEDIA CENTER
Scale: 1/4" = 1'-0" 1/AP120B



3 SM. CLASSROOM
Scale: 1/4" = 1'-0" 1/AP120B



2 SPECIAL EDUC. SUPPORT (ADA)
Scale: 1/4" = 1'-0" 1/AP120B

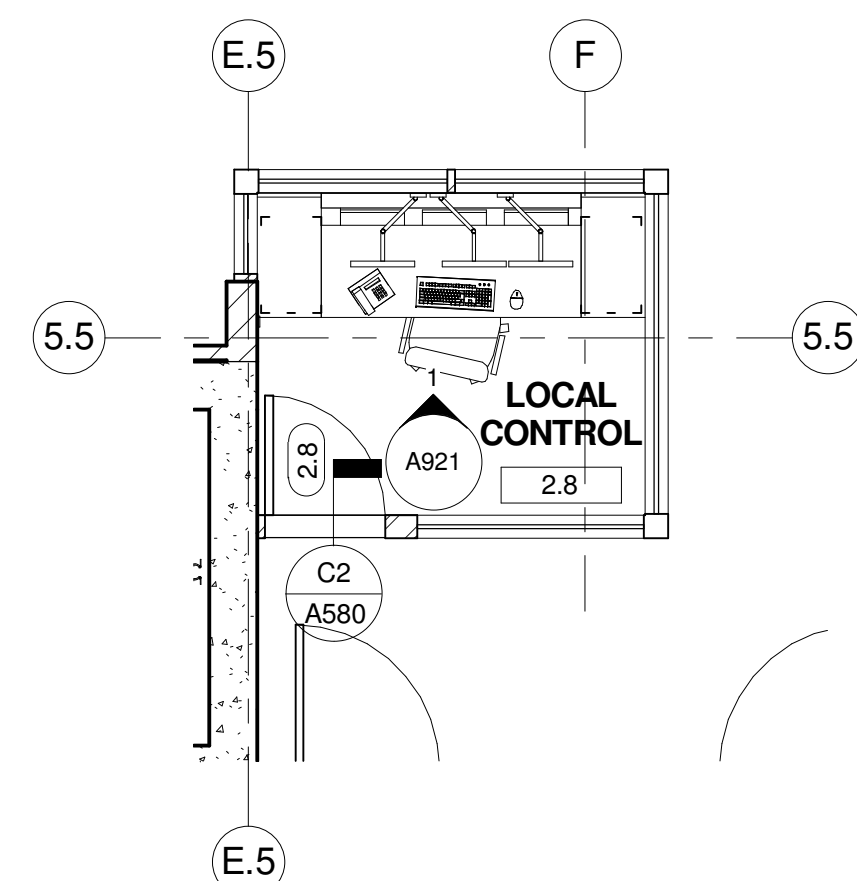
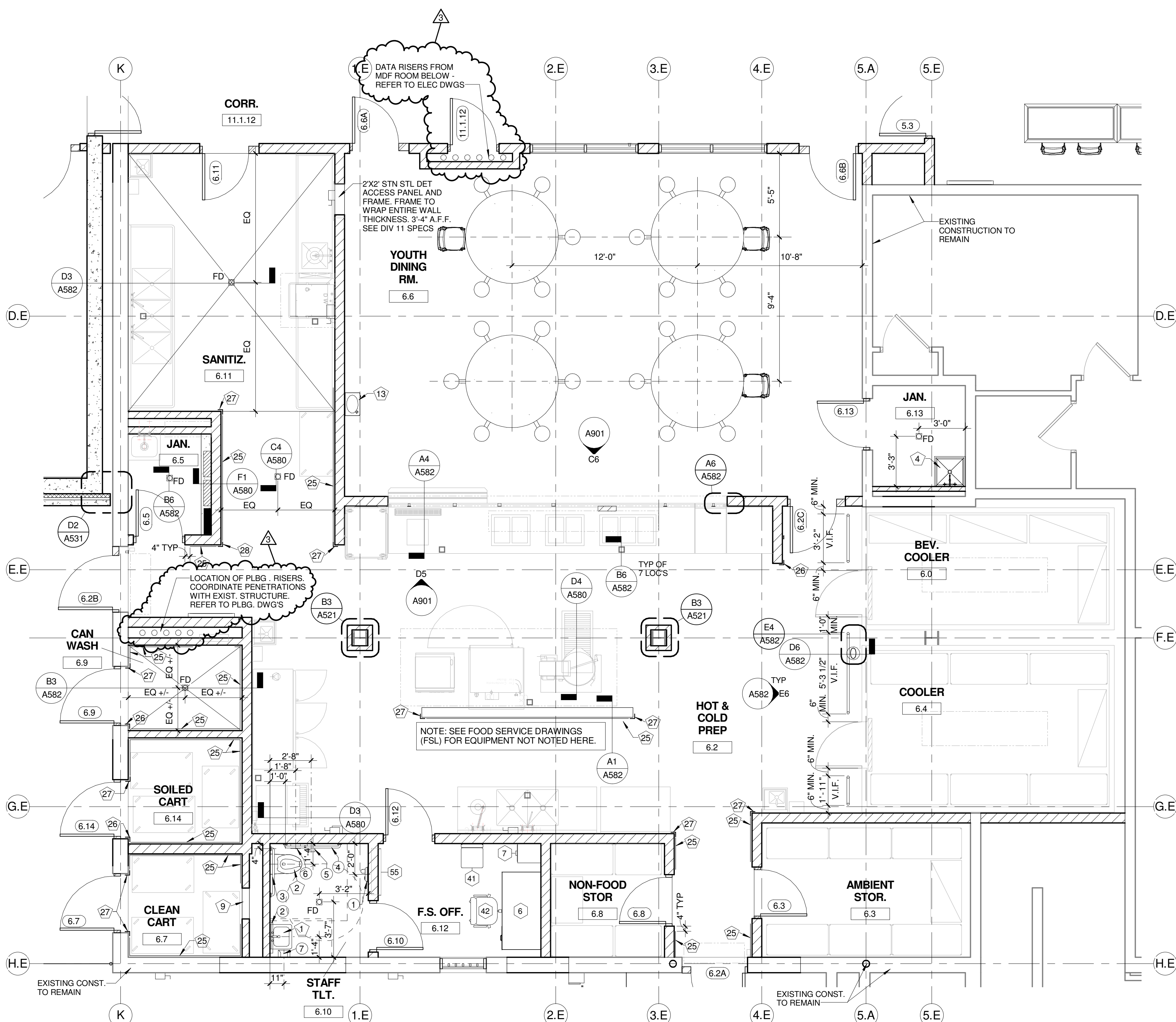


1 COMPUTER LAB
Scale: 1/4" = 1'-0" 1/AP120B

	GENERAL NOTES
1.	REFER TO DWGS FE DRAWINGS FOR FURNITURE, FIXTURE, AND EQUIPMENT TAGGED (X).
2.	REFER TO DETENTION SHEETS FOR DETENTION FURNITURE, FIXTURES.
3.	DOOR, WINDOW, DOOR, MOVING HINGES, AND GLAZED FRAME NOT DETAIL HERE.
4.	SEET FLOOR DRAINS FLUSH WITH FINISH FLOORING, UNLESS NOTED OR DETAIL OTHERWISE. SEE ROOM FINISH SCHEDULE FOR FLOORING FINISH REQUIREMENTS.
5.	ALL DIMENSIONS SHOWN ARE FROM FACE OF FINISHED WALL. CONSTRUCTION OF THE CENTERLINE OF A PLUMBING FIXTURE, TOILET ACCESSORY, OR TOILET PARTITION.
6.	PROVIDE TAMPER-PROOF METAL FASTENERS PER PROJECT MANUAL SPECIFICATION SECTION 11100.0.
7.	PROVIDE SECURITY DOORS PER PROJECT MANUAL SPECIFICATION SECTION 11100.0.
8.	REFER TO PIPING DRAWINGS FOR ADDITIONAL PIPING ACCESS REQUIREMENTS.
9.	COORDINATE EXACT LOCATIONS OF ACCESS PANELS WITH PLBG INSTALLATION.
10.	REFER TO SHEET A610 FOR TAGGED (XX) RM FRAME ELEVATIONS.
11.	REFER TO SHEET A610 FOR TAGGED (XX) DETENTION FRAME ELEVATIONS.
12.	REFER TO DETENTION SHEETS FOR TAGGED (XX) DETENTION FRAME ELEVATIONS.

KEYED PLAN @ NOTES	
NO.	DESCRIPTION
1	WALL MOUNTED LAV (ADA) - REFER TO PLBG DWGS
2	WALL MOUNTED WC (ADA) - REFER TO PLBG DWGS
3	ELECTRIC WATER COOLER (ADA) - REFER TO PLBG DWGS
4	MOP SINK BASIN - REFER TO PLBG DWGS
5	DETENTION/COMBINATION UNIT (ADA) - REFER TO DET AND PLBG DWGS
6	DETENTION/COMBINATION UNIT - REFER TO DET AND PLBG DWGS
7	18"W x 18"H ACCESS PANEL - 8" MIN. A.F.F. - COORD. EXACT LOCATION
8	18"W x 18"H DETENTION ACCESS PANEL - 8" MIN. A.F.F. - COORD. EXACT LOCATION REFER TO DET - DWG D-501
9	24"W x 24"H ACCESS PANEL - 8" MIN. A.F.F. - COORD. EXACT LOCATION REFER TO DET - DWG D-501
10	15"W x 15"H ACCESS PANEL - COORD. EXACT LOCATION
11	DETENTION SHOWER FIXTURE - REFER TO PLBG DWGS
12	DETENTION WATER FLOOR - REFER TO PLBG DWGS
13	DETENTION LAV (ADA) - REFER TO PLBG DWGS
14	DETENTION WC (ADA) - REFER TO PLBG DWGS
15	SINK WITH FOOT PEDAL CONTROLS - REFER TO PLBG DWGS
16	NOT USED
17	DETENTION SHOWER FIXTURE (ADA) - REFER TO PLBG DWGS
18	WALL MTD 3-TIER OPEN SHELVING - REFER TO DETENTION DWGS
19	DETENTION DESK - REFER TO DETENTION DWGS
20	WALL MTD OPEN SHELF - LOCATED OVER DESK - REFER TO DETENTION DWGS
21	FLOOR MTD DETENTION STOOL - CENTER ON DESK - REFER TO DETENTION DWGS
22	FLOOR MTD DETENTION BED - REFER TO DETENTION DWGS
23	WALL MTD DETENTION MIRROR - REFER TO DETENTION DWGS
24	HOPE WALL GUARD - TYPE A - DTL AB/A581
25	HOPE WALL GUARD - TYPE B - DTL AB/A581
26	HOPE 3 1/2" CORNER GUARD - TYPE A - DTL AB/A581
27	HOPE 3 1/2" CORNER GUARD - TYPE B - DTL AB/A581
28	HOPE 3 1/2" CORNER GUARD - TYPE C - DTL AB/A581
29	PAINTED MTL STAIRS, STL BAR GRATE TREADS, PIPE GUARDRAIL AND HANDRAILS, TY IN HOUSING UNITS.
30	MOP RACK

TOILET ACCESSORIES SCHEDULE (E)				
NO.	DESCRIPTION	MANUFACTURER	MODEL NO.	MOUNTING HEIGHT
1	SURFACE MOUNTED ELECTRIC HAND DRYER	XLERATOR	XL-SERIES	41" TO BOTTOM OF DRYER
2	WALL MIRROR - 24"X W 36" H, CENTER OVER SINK	BOBRICK	B-290 SERIES	40" TO BTM. OF REFLECTIVE SURFACE
3	1 1/2" O.D. STAINLESS STEEL GRAB BAR 1' 36" L	BOBRICK	B-6806 SERIES	36" TO TOP OF BAR
4	1 1/2" O.D. STAINLESS STEEL GRAB BAR 42"	BOBRICK	B-6806 SERIES	36" TO TOP OF BAR
5	SURFACE MOUNTED TOILET TISSUE DISPENSER	BOBRICK	B-2888	19" TO BOTTOM OF UNIT
6	SURFACE MOUNTED SANITARY NAPKIN DISPOSAL	BOBRICK	B-254	28" TO TOP OF UNIT
7	WALL MOUNTED SOAP DISPENSER	--	OWNER PROVIDED	42" TO BOTTOM OF UNIT
8	FOLD UP SHOWER SEAT	BOBRICK	B-517 (OR B-518)	18" TO TOP OF SEAT
9	1 1/2" O.D. STAINLESS STEEL SHOWER GRAB BAR 48"X32" SHAVED W/ UNDER SLUNG PLATE HAVING WEEPS IN CORNERS	--	REFER TO DET. SPECS	REFER TO DET. SPECS
10	STAINLESS STEEL VERTICAL SHOWER GRAB BAR	GENERAL PARTITIONS	B-6806 SERIES	34" TO TOP OF BAR
11	PHENOLIC RESIN TOILET PARTITION	GENERAL PARTITIONS	COLOR-THRU PHENOLIC-30 SERIES	FLOOR MOUNTED
12	1 1/2" O.D. STAINLESS STEEL GRAB BAR 48" L	BOBRICK	B-6806 SERIES	36" TO TOP OF BAR
13	1 1/2" O.D. STAINLESS STEEL GRAB BAR 24" L	BOBRICK	B-6806 SERIES	36" TO TOP OF BAR
14	RECESSED PAPER TOWEL DISPENSER AND WASTE RECEPTACLE	BOBRICK	B-3944	60" TO TOP OF UNIT
15	SURFACE MOUNTED PAPER TOWEL DISPENSER	BOBRICK	B-262	54" TO TOP OF UNIT
16	60" HEAVY DUTY SHOWER CURTAIN ROD WITH CONCEALED MOUNTING	BOBRICK	B-207	7'-0" A.F.F.
17	36" HEAVY DUTY SHOWER CURTAIN ROD WITH CONCEALED MOUNTING	BOBRICK	B-207	7'-0" A.F.F.
18	WALL MOUNTED FOLD-DOWN BABY CHANGING TABLE	BOBRICK	BK200	41" TO BOTTOM OF DRYER
19	1 1/2" O.D. STAINLESS STEEL GRAB BAR WITH UNDERSLUNG PLATE HAVING WEEPS IN CORNERS 42"	--	REFER TO DET. SPECS	REFER TO DET. SPECS
20	1 1/2" O.D. STAINLESS STEEL GRAB BAR WITH UNDERSLUNG PLATE HAVING WEEPS IN CORNERS 36" L	--	REFER TO DET. SPECS	REFER TO DET. SPECS
21	1 1/2" O.D. STAINLESS STEEL GRAB BAR WITH UNDERSLUNG PLATE HAVING WEEPS IN CORNERS 48" L	--	REFER TO DET. SPECS	REFER TO DET. SPECS
22	1 1/2" O.D. STAINLESS STEEL GRAB BAR WITH UNDERSLUNG PLATE HAVING WEEPS IN CORNERS 48" L	--	REFER TO DET. SPECS	REFER TO DET. SPECS



GENERAL NOTES
<p>1. REFER TO DWGS FE DRAWINGS FOR FURNITURE, FIXTURES, AND EQUIPMENT TAGGED (X).</p> <p>2. REFER TO DETENTION SHEETS FOR DETENTION FURNITURE, FIXTURES, EQUIPMENT, DOORS, MOUNTING HEIGHTS, AND GLAZED FRAMES NOT NOTED HERE.</p> <p>3. REFER TO DETENTION DRAWING FOR FINISH WITH FINISH FLOORING, UNLESS NOTED OR DETAILED OTHERWISE. SEE ROOM FINISH SCHEDULE FOR FLOORING FINISH REQUIREMENTS.</p> <p>4. ALL DIMENSIONS SHOWN ARE FOR TAGGED (X) ALUMINUM FRAME CONSTRUCTION OR THE CENTERLINE OF A PLUMBING FIXTURE, TOILET ACCESSORY, OR TOILET PARTITION.</p> <p>5. PROVIDE TAMPER-PROOF METAL FASTENERS PER PROJECT MANUAL SPECIFICATION SECTION 11900.</p> <p>6. PROVIDE SECURITY LOCK SYSTEMS PER PROJECT MANUAL SPECIFICATION SECTION 11900.</p> <p>7. REFER TO PLUMBING DRAWINGS FOR ACCESS PANELS WITH A PLUMB INSTALLATION. PROVIDE EIGHT (8) LOCKS FOR ACCESS PANELS WITH A PLUMB INSTALLATION.</p> <p>8. REFER TO SHEET A610 FOR TAGGED (X) "JM" FRAME ELEVATIONS.</p> <p>9. REFER TO SHEET A610 FOR TAGGED (X) "AL" ALUMINUM FRAME ELEVATIONS.</p> <p>10. REFER TO DETENTION SHEETS FOR TAGGED (X) "DET" DETENTION FRAME ELEVATIONS.</p>

KEYED PLAN (S) NOTES	
NO.	DESCRIPTION
1	WALL MOUNTED LAV (ADA) - REFER TO PLBG DWGS
2	WALL MOUNTED WC (ADA) - REFER TO PLBG DWGS
3	ELECTRIC WATER COOLER (ADA) - REFER TO PLBG DWGS
4	MOP SINK BASIN - REFER TO PLBG DWGS
5	DETENTION COMBINATION UNIT (ADA) - REFER TO DET AND PLBG DWGS
6	DETENTION COMBINATION UNIT - REFER TO DET AND PLBG DWGS
7	18"W x 18"H ACCESS PANEL - 8" MIN. A.F.F. - COORD. EXACT LOCATION
8	18"W x 18"H DETENTION ACCESS PANEL - 8" MIN. A.F.F. - COORD. EXACT LOCATION - REFER TO DET. DWGS D 501
9	24"W X 24"H ACCESS PANEL - 8" MIN. A.F.F. - COORD. EXACT LOCATION
10	15"W x 15"H ACCESS PANEL - COORD. EXACT LOCATION
11	DETENTION SHOWER FIXTURE - REFER TO PLBG DWGS
12	DETENTION WATER FOUNTAIN - REFER TO PLBG DWGS
13	DETENTION LAV (ADA) - REFER TO PLBG DWGS
14	DETENTION WC (ADA) - REFER TO PLBG DWGS
15	SINK WITH FOOT PEDAL CONTROLS - REFER TO PLBG DWGS
16	NOT USED
17	DETENTION SHOWER FIXTURE (ADA) - REFER TO PLBG DWGS
18	WALL MTD 3 TIER OPEN SHELVING - REFER TO DETENTION DWGS
19	DETENTION DESK - REFER TO DETENTION DWGS
20	WALL MTD OPEN SHELF, LOCATED OVER DESK - REFER TO DETENTION DWGS
21	FLOOR MTD DETENTION STOOL, CENTER ON DESK - REFER TO DETENTION DWGS
22	FLOOR MTD DETENTION BED - REFER TO DETENTION DWGS
23	WALL MTD DETENTION MIRROR - REFER TO DETENTION DWGS
24	HOPE WALL GUARD - TYPE A - DTL. AB/A581
25	HOPE WALL GUARD - TYPE B - DTL. AB/A581
26	HOPE 3 1/2" CORNER GUARD - TYPE A - DTL. AB/A581
27	HOPE 3 1/2" CORNER GUARD - TYPE B - DTL. AB/A581
28	HOPE 3 1/2" CORNER GUARD - TYPE C - DTL. AB/A581
29	PAINTED MT. STAIRS, STL BAR GRATE TREADS, PIPE GUARDRAIL AND HANDRAILS, TY IN HOUSING UNITS
30	MOP RACK

TOILET ACCESSORIES SCHEDULE (②)				
NO.	DESCRIPTION	MANUFACTURER	MODEL NO.	MOUNTING HEIGHT
1	SURFACE MOUNTED ELECTRIC HAND DRYER	XLERATOR	XL-SERIES	41" TO BOTTOM OF DRYER
2	WALL MIRROR - 24" W X 36" H, CENTER OVER SINK	BOBRICK	B-290 SERIES	40" TO BTM. OF REFLECTIVE SURFACE
3	1 1/2" O.D. STAINLESS STEEL GRAB BAR / 36" L	BOBRICK	B-6806 SERIES	36" TO TOP OF BAR
4	1 1/2" O.D. STAINLESS STEEL GRAB BAR / 42" L	BOBRICK	B-6806 SERIES	36" TO TOP OF BAR
5	SURFACE MOUNTED TOILET TISSUE DISPENSER	BOBRICK	B-2888	19" TO BOTTOM OF UNIT
6	SURFACE MOUNTED SANITARY NAPKIN DISPOSAL	BOBRICK	B-254	28" TO TOP OF UNIT
7	WALL MOUNTED SOAP DISPENSER	--	OWNER PROVIDED	42" TO BOTTOM OF UNIT
8	FOLD UP SHOWER SEAT	BOBRICK	B-517 (OR B-518)	18" TO TOP OF SEAT
9	1 1/2" O.D. STAINLESS STEEL SHOWER GRAB BAR, 18"x32" L-SHAPED W/ UNDER SLUNG PLATE HAVING WEEPS IN CORNERS	--	REFER TO DET. SPECS	REFER TO DET. SPECS
10	STAINLESS STEEL VERTICAL SHOWER GRAB BAR	BOBRICK	B-6806 SERIES	34" TO TOP OF BAR
11	PHENOLIC RESIN TOILET PARTITION	GENERAL PARTITIONS	COLOR-THRU PHENOLIC 30 SERIES	FLOOR MOUNTED
12	1 1/2" O.D. STAINLESS STEEL GRAB BAR / 36" L	BOBRICK	B-6806 SERIES	36" TO TOP OF BAR
13	1 1/2" O.D. STAINLESS STEEL GRAB BAR / 24" L	BOBRICK	B-6806 SERIES	36" TO TOP OF BAR
14	RECESSED PAPER TOWEL DISPENSER AND WASTE RECEPTACLE	BOBRICK	B-3944	60" TO TOP OF UNIT
15	SURFACE MOUNTED PAPER TOWEL DISPENSER	BOBRICK	B-262	54" TO TOP OF UNIT
16	60" HEAVY DUTY SHOWER CURTAIN ROD WITH CONCEALED MOUNTING	BOBRICK	B-267	7'-0" A.F.F.
17	36" HEAVY DUTY SHOWER CURTAIN ROD WITH CONCEALED MOUNTING	BOBRICK	B-267	7'-0" A.F.F.
18	WALL MOUNTED FOLD-DOWN BABY CHANGING TABLE	BOBRICK	K8200	41" TO BOTTOM OF DRYER
19	1 1/2" O.D. STAINLESS STEEL GRAB BAR WITH UNDERSLUNG PLATE HAVING WEEPS IN CORNERS / 42" L	--	REFER TO DET. SPECS	REFER TO DET. SPECS
20	1 1/2" O.D. STAINLESS STEEL GRAB BAR WITH UNDERSLUNG PLATE HAVING WEEPS IN CORNERS / 36" L	--	REFER TO DET. SPECS	REFER TO DET. SPECS
21	1 1/2" O.D. STAINLESS STEEL GRAB BAR WITH UNDERSLUNG PLATE HAVING WEEPS IN CORNERS / 48" L	--	REFER TO DET. SPECS	REFER TO DET. SPECS
22	1 1/2" O.D. STAINLESS STEEL GRAB BAR WITH UNDERSLUNG PLATE HAVING WEEPS IN CORNERS / 24" L	--	REFER TO DET. SPECS	REFER TO DET. SPECS



A JOINT-VENTURE BETWEEN

**PSA-DEWBERY +
PENZA BAILEY ARCHITECTS**




HOPE FURRER
Associates, Inc.



SIDHU ASSOCIATES, INC.
Consulting Engineers

EXECUTIVE PLAZA II, SUITE 1000
1500 MACHESON DRIVE
BETH VILLAGE, MARYLAND 21031
PHONE (410) 359-3145




TERRA LOGOS
ECO ARCHITECTURE, PC



**LEWICKI
ESTIMATING
SERVICES, INC.**

STATE OF MARYLAND - DPSCS

BCDC YOUTH DETENTION CENTER

BALTIMORE MARYLAND




SEAL

ARCHITECT
13814

JAMES L. BEIGHT
STATE OF MARYLAND

THE CONTRACT DOCUMENTS FOR THE INDICATED
PUBLIC IMPROVEMENT WERE PREPARED UNDER
SUPERVISION AND, TO THE BEST OF MY
KNOWLEDGE, INFORMATION AND BELIEF, THEY
COMPLY WITH THE RELEVANT BUILDING CODES OF
THE STATE OF MARYLAND, LICENSE NUMBER 13814
EXPIRATION DATE 3/28/2015.

KEY PLAN



SCALE

As indicated

[illegible]

LARGE SCALE FLOOR PLANS

PSA-DEWBERRY PROJECT NO.	50061725
DPPSCS CONTRACT NO.	KT-000-150-C01

A205

SHEET NO.



VAPOR PERMEABLE AIR BARRIER OVER 5/8" TH. GLASS-MAT SHEATHING (R-8.4 MIN.)

MINERAL WOOL BOARD INSULATION (R-8.4 MIN.)

3" x 3" x 1/4" x 0'-1 1/2" STL. CLIP ANGLE - WELD TO STL. RAIL AND ANCHOR TO FIN. FLR W/ 3/8" DIA EXP. ANCHORS

2" x 1/2" STL. PLATE LADDER RAILING, EASE ALL EDGES

3/4" DIA. STL. BAR LADDER RUNGS W/ NON SLIP COATING PLUG WELD TO THE LADDER RAILS

L 8"x3"x1/2" x 0'-2 1/2" STL. CLIP ANGLE - WELD TO LADDER RAILS AND BOLT TO CMU

3/8" DIA. THRU-BOLT W/ 1 1/2" WASHERS

SLUSH CELLS SOLID W/ GROUT

#4 VERT. REINF. BAR

CMU WALL PARTITION REFER TO WALL TYPE PLANS

7"

9"

9"

3/4" DIA. STL. BAR LADDER RUNGS W/ NON SLIP COATING PLUG WELD TO THE LADDER RAILS

CAST STONE VENEER - SEE WALL SECTIONS

16"x3"x1/2" x 0'-2 1/2" BENT STL. BRACKET - WELD TO LADDER RAILS AND BOLT TO CONC. W/ 3/8" DIA. x 3" LONG EXPANSION ANCHORS.

LADDER BRACKET SHOULD BE PLACED IN VERTICAL JOINTS OF CAST STONE PANELS, COORDINATE PLACEMENT WITH CAST STONE ELEVATIONS

PROVIDE CONTINUOUS BACKER ROD & SEALANT AROUND ENTIRE LADDER RAIL PENETRATION

CONC. WALL - SEE STRUCT. DWGS.

F2 LADDER PLAN DETAIL
Scale: 1 1/2" = 1'-0"

D2 LADDER PLAN DETAIL
Scale: 1 1/2" = 1'-0"

1 HR. SPRAYED FIRE-RESISTIVE MATERIAL ON STRUCTURAL FRAMING FROM THIRD FLOOR SLAB TO 6" BELOW WINDOW SILL ELEVATION

STEEL COLUMN AND FRAMING - REFER TO STRUCTURAL DRAWINGS

3 5/8" x 16 GA. MIN. METAL STUDS @ 16" O.C. MAX. TOP AND BOTTOM TRACKS TO BE SAME GA. AS STUDS

2 LAYERS 5/8" ABUSE RESISTANT GYPSUM BOARD OVER 16 GA. SECURITY MESH

2X WOOD BLOCKING

2 LAYERS 5/8" ABUSE RESISTANT GYPSUM BOARD OVER 16 GA. SECURITY MESH

DETENTION ACCESS PANEL - REFER TO DETENTION DWGS.

FLUID APPLIED VAPOR PERMEABLE AIR BARRIER OVER 5/8" TH. GLASS-MAT GYPSUM SHEATHING MINERAL WOOL BOARD INSULATION (R-8.4 MIN.)

METAL "Z" FURRING BY METAL WALL PANEL MANUFACTURER

VERTICAL HAT CHANNELS BY METAL WALL PANEL MANUFACTURER

EXPOSED FASTENER METAL PANEL

SELF ADHERED SHEET FLASHING LAP ONTO CLOSURE FLASHING 3" MIN.

PRE-FIN. METAL CLOSURE FLASHING TURN VERTICAL LEG UP WALL MIN. 6"

CONTINUOUS SEALANT BEAD AROUND ENTIRE PERIMETER OF FRAME BOTH SIDES

HOLLOW METAL DOOR AND FRAME - REFER TO DOOR SCHEDULE

11 1/2"

3'-1"

CONTINUOUS SEALANT BEAD BETWEEN GYP BOARD AND STEEL PLATE

1/4" GALV. STEEL PLATE ENTIRE WIDTH OF OPENING ANCHOR TO WD BLOCKING AT CMU AND METAL STUD WALLS. FINISH WITH HIGH PERFORMANCE COATING.

1'-11"

2"

2X WOOD BLOCKING

CONTINUOUS SEALANT BEAD AROUND ENTIRE PERIMETER OF FRAME

6" NOM. CMU GROUTED SOLID WITH REINFORCING AT 8" O.C. VERT. AND HORIZ.

MINERAL WOOL BLANKET INSULATION (R-23 MIN.)

6" x 16 GA. MIN. GALV. METAL STUDS @ 16" O.C. MAX. TOP AND BOTTOM TRACKS TO BE SAME GA. AS STUDS

ROOF AND CLERESTORY PLAN 36" - 8"

6 MIL. POLYETHYLENE VAPOR RETARDER LAP ONTO CONCRETE MIN. 6"

1 HR. SPRAYED FIRE-RESISTIVE MATERIAL ON STRUCTURAL FRAMING FROM THIRD FLOOR SLAB TO 6" BELOW WINDOW SILL

S.S. RECEIVER & COUNTERFLASHING EXTEND RECEIVER LEG UP AND UNDER STEEL PLATE. PROVIDE SEPARATION SHEET BETWEEN FLASHING AND STEEL PLATE

CONT. TERMINATION BAR/ SEALANT BEAD

RUN TPO FLASHING MEMBRANE UP AND UNDER S.S. RECEIVER AND COUNTERFLASHING

FULLY ADHERED WHITE TPO ROOF MEMBRANE OVER TAPERED POLYISOCYANURATE INSULATION ON FLAT STRUCTURAL FRAMING (MIN. R-25)

CAST-IN-PLACE CONCRETE STRUCTURE - REFER TO STRUCTURAL DRAWINGS

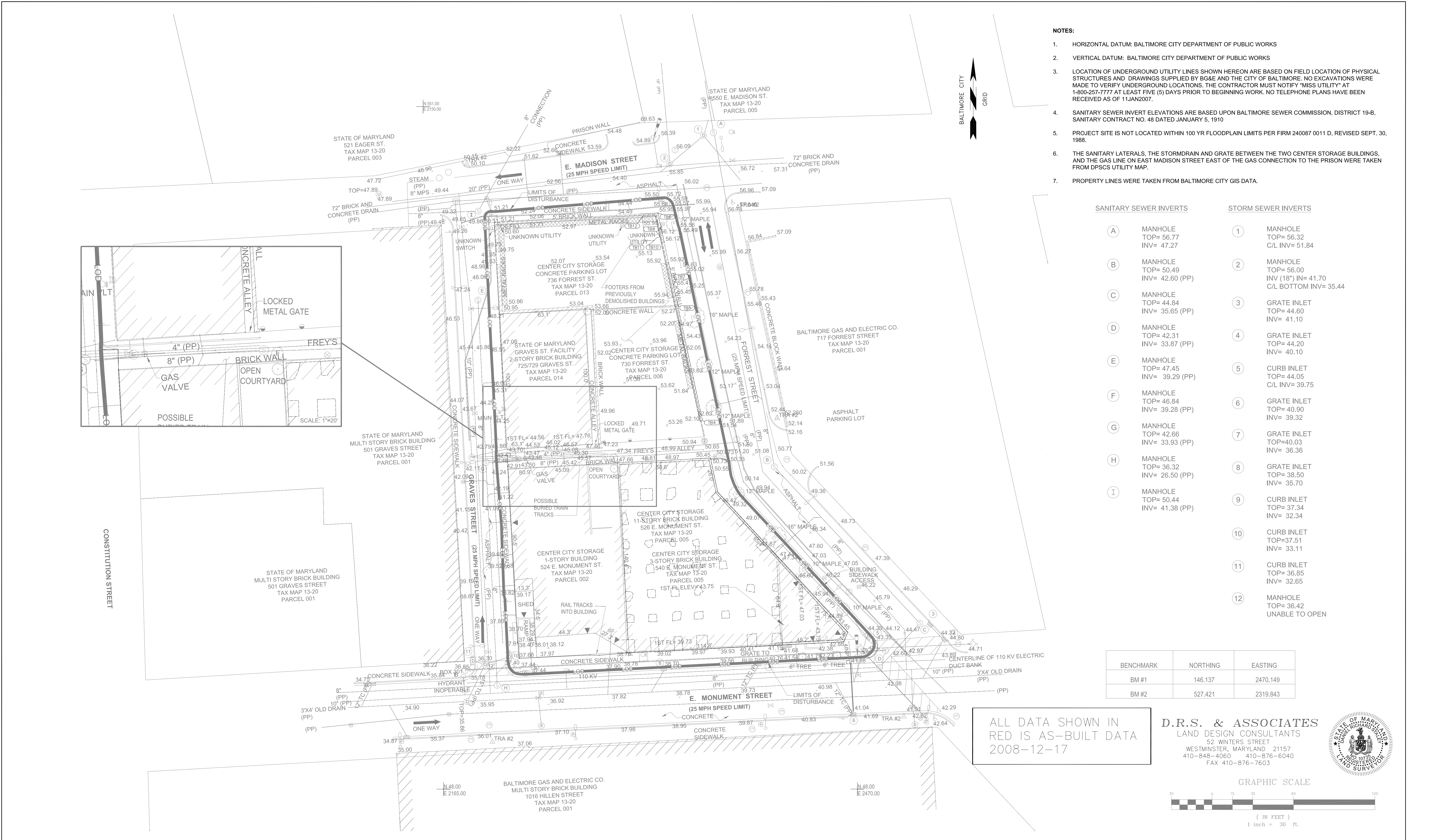
8" MIN

1'-0"

11"

2'-2"

F3 A702



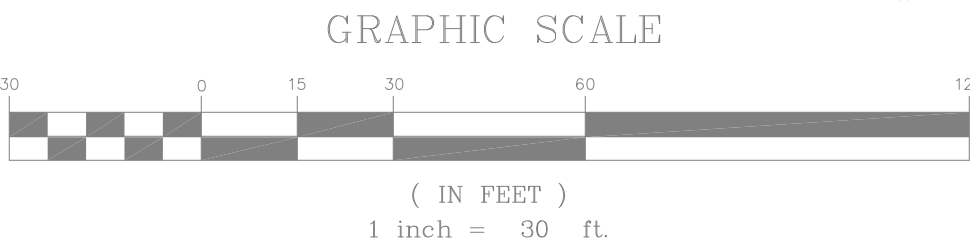
- NOTES:**
- HORIZONTAL DATUM: BALTIMORE CITY DEPARTMENT OF PUBLIC WORKS
 - VERTICAL DATUM: BALTIMORE CITY DEPARTMENT OF PUBLIC WORKS
 - LOCATION OF UNDERGROUND UTILITY LINES SHOWN HEREON ARE BASED ON FIELD LOCATION OF PHYSICAL STRUCTURES AND DRAWINGS SUPPLIED BY BG&E AND THE CITY OF BALTIMORE. NO EXCAVATIONS WERE MADE TO VERIFY UNDERGROUND LOCATIONS. THE CONTRACTOR MUST NOTIFY "MISS UTILITY" AT 1-800-257-7777 AT LEAST FIVE (5) DAYS PRIOR TO BEGINNING WORK. NO TELEPHONE PLANS HAVE BEEN RECEIVED AS OF 11JAN2007.
 - SANITARY SEWER INVERT ELEVATIONS ARE BASED UPON BALTIMORE SEWER COMMISSION, DISTRICT 19-B, SANITARY CONTRACT NO. 48 DATED JANUARY 5, 1910
 - PROJECT SITE IS NOT LOCATED WITHIN 100 YR FLOODPLAIN LIMITS PER FIRM 240087 0011 D, REVISED SEPT. 30, 1988.
 - THE SANITARY LATERALS, THE STORMDRAIN AND GRATE BETWEEN THE TWO CENTER STORAGE BUILDINGS, AND THE GAS LINE ON EAST MADISON STREET EAST OF THE GAS CONNECTION TO THE PRISON WERE TAKEN FROM DPSCS UTILITY MAP.
 - PROPERTY LINES WERE TAKEN FROM BALTIMORE CITY GIS DATA.

SANITARY SEWER INVERTS		STORM SEWER INVERTS	
A	MANHOLE TOP= 56.77 INV= 47.27	1	MANHOLE TOP= 56.32 C/L INV= 51.84
B	MANHOLE TOP= 50.49 INV= 42.60 (PP)	2	MANHOLE TOP= 56.00 INV (18") IN= 41.70 C/L BOTTOM INV= 35.44
C	MANHOLE TOP= 44.84 INV= 35.65 (PP)	3	GRATE INLET TOP= 44.60 INV= 41.10
D	MANHOLE TOP= 42.31 INV= 33.87 (PP)	4	GRATE INLET TOP= 44.20 INV= 40.10
E	MANHOLE TOP= 47.45 INV= 39.29 (PP)	5	CURB INLET TOP= 44.05 C/L INV= 39.75
F	MANHOLE TOP= 46.84 INV= 39.28 (PP)	6	GRATE INLET TOP= 40.90 INV= 39.32
G	MANHOLE TOP= 42.66 INV= 33.93 (PP)	7	GRATE INLET TOP= 40.03 INV= 36.36
H	MANHOLE TOP= 36.32 INV= 26.50 (PP)	8	GRATE INLET TOP= 38.50 INV= 35.70
I	MANHOLE TOP= 50.44 INV= 41.38 (PP)	9	CURB INLET TOP= 37.34 INV= 32.34
		10	CURB INLET TOP= 37.51 INV= 33.11
		11	CURB INLET TOP= 36.85 INV= 32.65
		12	MANHOLE TOP= 36.42 UNABLE TO OPEN

BENCHMARK	NORTHING	EASTING
BM #1	146.137	2470.149
BM #2	527.421	2319.843

ALL DATA SHOWN IN
RED IS AS-BUILT DATA
2008-12-17

D.R.S. & ASSOCIATES
LAND DESIGN CONSULTANTS
52 WINTERS STREET
WESTMINSTER, MARYLAND 21157
410-848-4060 410-876-6040
FAX 410-876-7603

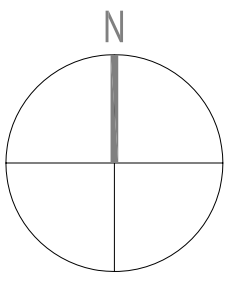


MARK	DATE	DESCRIPTION
	09-17-07	FINAL SUBMISSION
	04-25-07	95% CD SUBMISSION
	03-21-07	50% CD SUBMISSION
	02-08-07	SCHEMATIC DESIGN
REVISIONS		

I CERTIFY THAT THESE DOCUMENTS
WERE PREPARED OR APPROVED BY ME,
AND THAT I AM A DULY LICENSED
ENGINEER UNDER THE LAWS OF THE
STATE OF MARYLAND.

LICENSE No. : 20998
EXPIRATION DATE: 2009-10-14

PROJECT NO:	06057
CAD DWG FILE:	06057_CD-103.DWG
DESIGNED BY:	JTB
DRAWN BY:	RJB
CHECKED BY:	TAS
PROJECT OFFICER:	



EXISTING CONDITIONS PLAN AS-BUILT PLAN

**DEMOLITION OF BUILDINGS & CLEARING OF
SITE FOR THE YOUTH DETENTION CENTER**

**BALTIMORE CITY DETENTION CENTER
BALTIMORE, MARYLAND**

CONTRACT NO. :KT-000-000-001
DATE: 9/17/2007
DATE: 2008-12-17

CD-103

SHEET: 2 OF 4
SHEET: 9 OF 79